

For Research Use Only

KHK Polyclonal antibody

Catalog Number: 15681-1-AP

Featured Product

8 Publications



Basic Information

Catalog Number:

15681-1-AP

Size:

150ul, Concentration: 400 ug/ml by Nanodrop and 233 ug/ml by Bradford method using BSA as the standard;

Source:

Rabbit

Isotype:

IgG

Immunogen Catalog Number:

AG8182

GenBank Accession Number:

BC006233

GeneID (NCBI):

3795

UNIPROT ID:

P50053

Full Name:

ketoheokinase (fructokinase)

Calculated MW:

298 aa, 33 kDa

Observed MW:

33-35 kDa

Purification Method:

Antigen affinity purification

Recommended Dilutions:

WB 1:500-1:2000

IP 0.5-4.0 ug for 1.0-3.0 mg of total protein lysate

IHC 1:200-1:800

IF/ICC 1:50-1:500

Applications

Tested Applications:

WB, IHC, IF/ICC, IP, ELISA

Cited Applications:

WB, IHC

Species Specificity:

human, mouse, rat

Cited Species:

human, mouse

Positive Controls:

WB : mouse liver tissue, human liver tissue, rat liver tissue

IP : mouse liver tissue, HepG2 cells

IHC : human liver tissue,

IF/ICC : HepG2 cells,

Note-IHC: suggested antigen retrieval with TE buffer pH 9.0; (*) Alternatively, antigen retrieval may be performed with citrate buffer pH 6.0

Background Information

Ketoheokinase catalyzes conversion of fructose to fructose-1-phosphate, it is the first enzyme with a specialized pathway that catabolizes dietary fructose. Fructose metabolism seems to provide cancer cells with the supplementary fuel required for proliferation and metastasis.

Notable Publications

Author	Pubmed ID	Journal	Application
Xiajing Fan	28970966	PeerJ	WB
Scott P Allen	31647549	Brain	WB
Cholsoo Jang	32694791	Nat Metab	WB

Storage

Storage:

Store at -20°C. Stable for one year after shipment.

Storage Buffer:

PBS with 0.02% sodium azide and 50% glycerol pH 7.3.

Aliquoting is unnecessary for -20°C storage

*** 20ul sizes contain 0.1% BSA

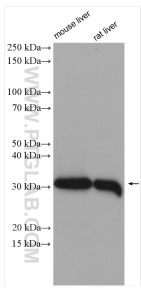
For technical support and original validation data for this product please contact:

T: 1 (888) 4PTGLAB (1-888-478-4522) (toll free in USA), or 1(312) 455-8498 (outside USA)

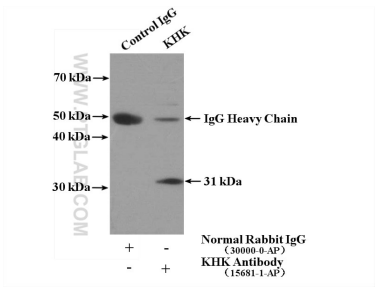
E: proteintech@ptglab.com
W: ptglab.com

This product is exclusively available under Proteintech Group brand and is not available to purchase from any other manufacturer.

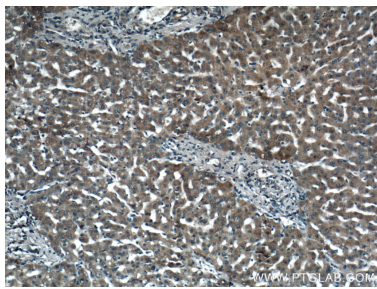
Selected Validation Data



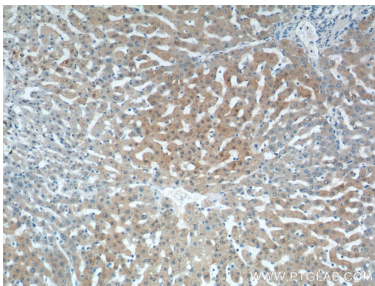
Various lysates were subjected to SDS PAGE followed by western blot with 15681-1-AP (KHK antibody) at dilution of 1:1000 incubated at room temperature for 1.5 hours.



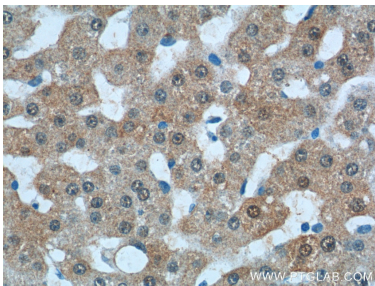
IP result of anti-KHK (IP:15681-1-AP, 4ug; Detection:15681-1-AP 1:500) with mouse liver tissue lysate 4000ug.



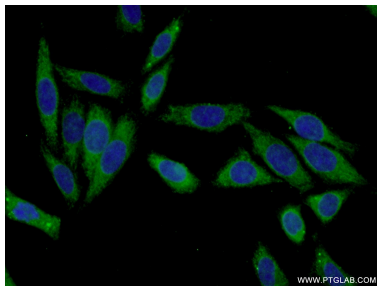
Immunohistochemical analysis of paraffin-embedded human liver tissue slide using 15681-1-AP (KHK Antibody) at dilution of 1:200 (under 10x lens).



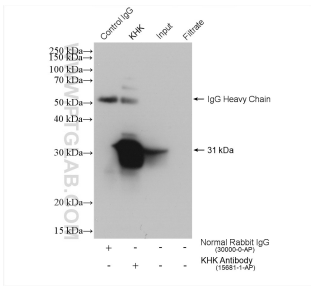
Immunohistochemical analysis of paraffin-embedded human liver tissue slide using 15681-1-AP (KHK Antibody) at dilution of 1:400 (under 10x lens).



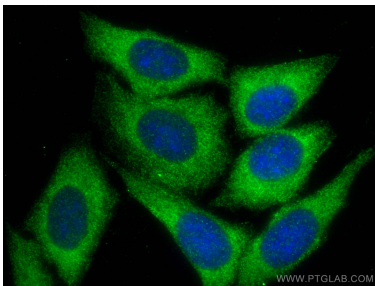
Immunohistochemical analysis of paraffin-embedded human liver tissue slide using 15681-1-AP (KHK Antibody) at dilution of 1:400 (under 40x lens).



Immunofluorescent analysis of (-20°C Ethanol) fixed HepG2 cells using 15681-1-AP (KHK antibody) at dilution of 1:50 and Alexa Fluor 488-conjugated AffiniPure Goat Anti-Rabbit IgG(H+L).



IP result of anti-KHK (IP:15681-1-AP, 4ug; Detection:15681-1-AP 1:1000) with HepG2 cells lysate 960 ug.



Immunofluorescent analysis of (-20°C Methanol) fixed HepG2 cells using KHK antibody (15681-1-AP) at dilution of 1:200 and CoraLite®488-Conjugated AffiniPure Goat Anti-Rabbit IgG(H+L).