

For Research Use Only

ERCC6L Polyclonal antibody

Catalog Number: 15688-1-AP

Featured Product

7 Publications



Basic Information

Catalog Number:

15688-1-AP

Size:

150ul, Concentration: 900 ug/ml by Nanodrop and 433 ug/ml by Bradford method using BSA as the standard;

Source:

Rabbit

Isotype:

IgG

Immunogen Catalog Number:

AG8223

GenBank Accession Number:

BC008808

GeneID (NCBI):

54821

UNIPROT ID:

Q2NIX8

Full Name:

excision repair cross-complementing rodent repair deficiency, complementation group 6-like

Calculated MW:

419 aa, 46 kDa, 141 kDa

Observed MW:

180 kDa

Purification Method:

Antigen affinity purification

Recommended Dilutions:

WB 1:1000-1:6000

IHC 1:50-1:500

Applications

Tested Applications:

WB, IHC, ELISA

Cited Applications:

WB, IHC

Species Specificity:

human, mouse

Cited Species:

human, mouse

Note-IHC: suggested antigen retrieval with TE buffer pH 9.0; (*) Alternatively, antigen retrieval may be performed with citrate buffer pH 6.0

Positive Controls:

WB: HeLa cells, human heart tissue, Jurkat cells, mouse lung tissue, K-562 cells, U2OS cells

IHC: human colon cancer tissue,

Background Information

ERCC6L, also named as Tumor antigen BJ-HCC-15 or PICH, is a 1250 amino acid protein, which contains one helicase ATP-binding domain, one helicase C-terminal domain and two TPR repeats. ERCC6L localizes to kinetochores, inner centromeres and belongs to the SNF2/RAD54 helicase family. ERCC6L as a DNA helicase that acts as an essential component of the spindle assembly checkpoint. The calculated molecular weight of ERCC6L is 140 kDa, but the phosphorylated modification of molecular weight of ERCC6L is about 180kDa.

Notable Publications

Author	Pubmed ID	Journal	Application
Han Chen	32891122	BMC Cancer	WB
Ma-Li Zu	33716078	J Ethnopharmacol	WB
Xiaoyue Huang	35656882	Oncol Rep	WB

Storage

Storage:

Store at -20°C. Stable for one year after shipment.

Storage Buffer:

PBS with 0.02% sodium azide and 50% glycerol pH 7.3.

Aliquoting is unnecessary for -20°C storage

*** 20ul sizes contain 0.1% BSA

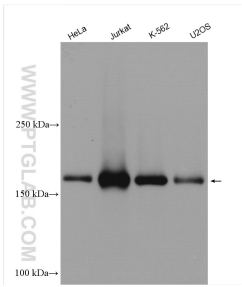
For technical support and original validation data for this product please contact:

T: 1 (888) 4PTGLAB (1-888-478-4522) (toll free in USA), or 1(312) 455-8498 (outside USA)

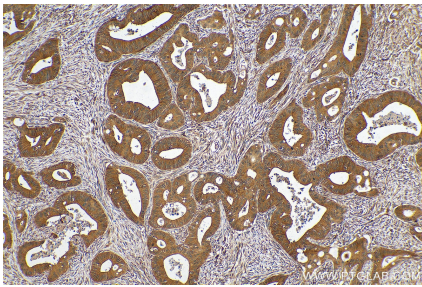
E: proteintech@ptglab.com
W: ptglab.com

This product is exclusively available under Proteintech Group brand and is not available to purchase from any other manufacturer.

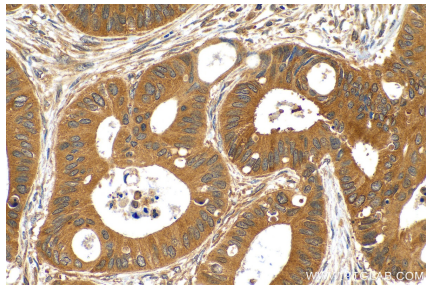
Selected Validation Data



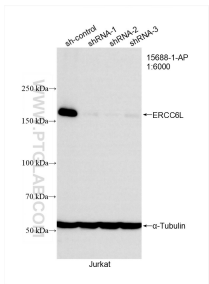
Various lysates were subjected to SDS PAGE followed by western blot with 15688-1-AP (ERCC6L antibody) at dilution of 1:3000 incubated at room temperature for 1.5 hours.



Immunohistochemical analysis of paraffin-embedded human colon cancer tissue slide using 15688-1-AP (ERCC6L antibody) at dilution of 1:200 (under 10x lens). Heat mediated antigen retrieval with Tris-EDTA buffer (pH 9.0).



Immunohistochemical analysis of paraffin-embedded human colon cancer tissue slide using 15688-1-AP (ERCC6L antibody) at dilution of 1:200 (under 40x lens). Heat mediated antigen retrieval with Tris-EDTA buffer (pH 9.0).



WB result of ERCC6L antibody (15688-1-AP; 1:6000; incubated at room temperature for 1.5 hours) with sh-Control and sh-ERCC6L transfected Jurkat cells.