

For Research Use Only

SSRP1 Polyclonal antibody

Catalog Number: 15696-1-AP

Featured Product

6 Publications



Basic Information

Catalog Number:

15696-1-AP

Size:

150ul, Concentration: 240 ug/ml by Nanodrop and 173 ug/ml by Bradford method using BSA as the standard;

Source:

Rabbit

Isotype:

IgG

Immunogen Catalog Number:

AG8318

GenBank Accession Number:

BC005116

GeneID (NCBI):

6749

UNIPROT ID:

Q08945

Full Name:

structure specific recognition protein 1

Calculated MW:

81 kDa

Observed MW:

86 kDa

Purification Method:

Antigen affinity purification

Recommended Dilutions:

WB 1:500-1:3000

IP 0.5-4.0 ug for 1.0-3.0 mg of total protein lysate

IHC 1:20-1:200

IF/ICC 1:50-1:500

Applications

Tested Applications:

WB, IHC, IF/ICC, IP, ELISA

Cited Applications:

WB, IHC

Species Specificity:

human, mouse, rat

Cited Species:

human, mouse

Note-IHC: suggested antigen retrieval with TE buffer pH 9.0; (*) Alternatively, antigen retrieval may be performed with citrate buffer pH 6.0

Positive Controls:

WB : HeLa cells, mouse testis tissue

IP : mouse testis tissue,

IHC : human ovary tumor tissue,

IF/ICC : HeLa cells,

Notable Publications

Author	Pubmed ID	Journal	Application
Qian Wang	31839745	Int J Med Sci	WB,IHC
Ikumi Ohsawa	33749947	FASEB J	IHC
Jianguo Yang	33691114	Cell Rep	WB

Storage

Storage:

Store at -20°C. Stable for one year after shipment.

Storage Buffer:

PBS with 0.02% sodium azide and 50% glycerol pH 7.3.

Aliquoting is unnecessary for -20°C storage

*** 20ul sizes contain 0.1% BSA

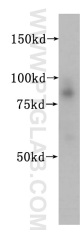
For technical support and original validation data for this product please contact:

T: 1 (888) 4PTGLAB (1-888-478-4522) (toll free in USA), or 1(312) 455-8498 (outside USA)

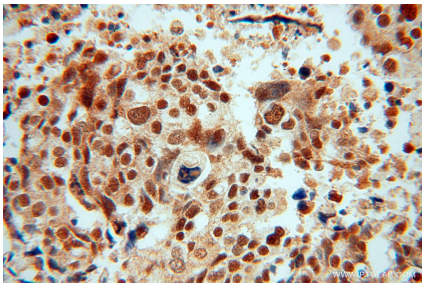
E: proteintech@ptglab.com
W: ptglab.com

This product is exclusively available under Proteintech Group brand and is not available to purchase from any other manufacturer.

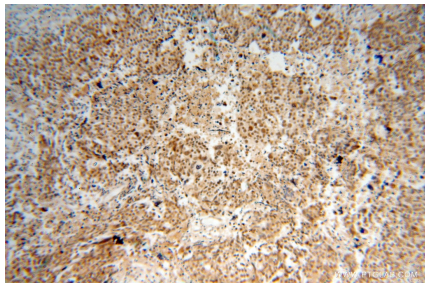
Selected Validation Data



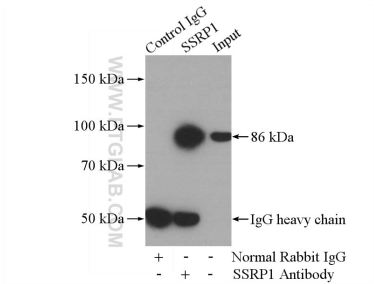
HeLa cells were subjected to SDS PAGE followed by western blot with 15696-1-AP (SSRP1 antibody) at dilution of 1:500 incubated at room temperature for 1.5 hours.



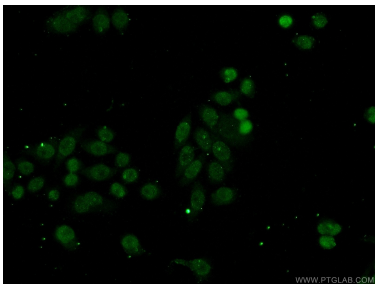
Immunohistochemical analysis of paraffin-embedded human ovary tumor using 15696-1-AP (SSRP1 antibody) at dilution of 1:100 (under 40x lens).



Immunohistochemical analysis of paraffin-embedded human ovary tumor using 15696-1-AP (SSRP1 antibody) at dilution of 1:100 (under 10x lens).



IP result of anti-SSRP1 (IP:15696-1-AP, 4ug; Detection:15696-1-AP 1:500) with mouse testis tissue lysate 2400ug.



Immunofluorescent analysis of (-20°C Ethanol) fixed HeLa cells using 15696-1-AP (SSRP1 antibody) at dilution of 1:50 and Alexa Fluor 488-conjugated AffiniPure Goat Anti-Rabbit IgG(H+L).