

For Research Use Only

IGFBP2 Polyclonal antibody

Catalog Number: 15699-1-AP



Basic Information

Catalog Number: 15699-1-AP	GenBank Accession Number: BC004312	Purification Method: Antigen affinity purification
Size: 150ul , Concentration: 240 ug/ml by Nanodrop and 153 ug/ml by Bradford method using BSA as the standard;	GeneID (NCBI): 3485	Recommended Dilutions: WB 1:500-1:1000
Source: Rabbit	UNIPROT ID: P18065	IHC 1:50-1:500
Isotype: IgG	Full Name: IGF binding protein 2	IF/ICC 1:200-1:800
Immunogen Catalog Number: AG8327	Calculated MW: 36 kDa	
	Observed MW: 32 kDa	

Applications

Tested Applications: WB, IHC, IF/ICC, ELISA	Positive Controls:
Species Specificity: human	WB : MCF-7 cells,
Note-IHC: suggested antigen retrieval with TE buffer pH 9.0; (*) Alternatively, antigen retrieval may be performed with citrate buffer pH 6.0	IHC : human pancreas cancer tissue,
	IF/ICC : A549 cells, HeLa cells

Background Information

Insulin-like growth factors (IGFs) and their binding proteins (IGFBPs) have important metabolic roles in the human body. IGFBP-2 is a 34 kD IGFBP protein with degraded fragments of 24 kD, 19kd and 15kd. The levels of IGFBP2 are elevated during progression of many human cancers. IGFBP2 is expressed in invasive PAC, whereas its expression in HG-PIN is low. It can be as an Immunohistochemical Marker for Prostatic Adenocarcinoma.

Storage

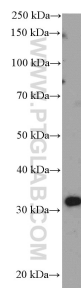
Storage:
Store at -20°C. Stable for one year after shipment.
Storage Buffer:
PBS with 0.02% sodium azide and 50% glycerol pH 7.3.
Aliquoting is unnecessary for -20°C storage

*** 20ul sizes contain 0.1% BSA

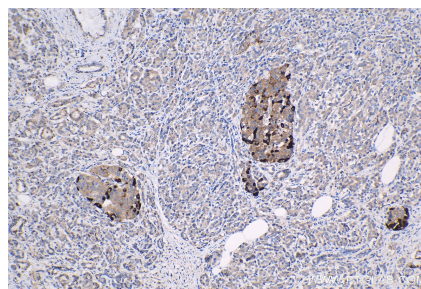
For technical support and original validation data for this product please contact:
T: 1 (888) 4PTGLAB (1-888-478-4522) (toll free in USA), or 1(312) 455-8498 (outside USA)
E: proteintech@ptglab.com
W: ptglab.com

This product is exclusively available under Proteintech Group brand and is not available to purchase from any other manufacturer.

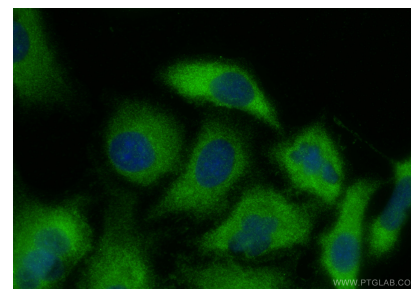
Selected Validation Data



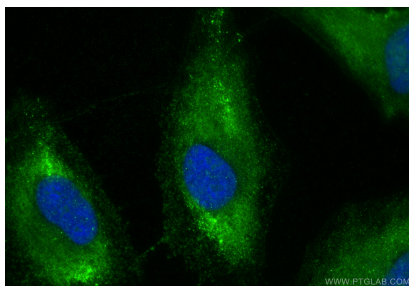
MCF-7 cells were subjected to SDS PAGE followed by western blot with 15699-1-AP (IGFBP2 Antibody) at dilution of 1:600 incubated at room temperature for 1.5 hours.



Immunohistochemical analysis of paraffin-embedded human pancreas cancer tissue slide using 15699-1-AP (IGFBP2 antibody) at dilution of 1:200 (under 10x lens). Heat mediated antigen retrieval with Tris-EDTA buffer (pH 9.0).



Immunofluorescent analysis of (-20°C Methanol) fixed A549 cells using IGFBP2 antibody (15699-1-AP) at dilution of 1:400 and CoraLite@488-Conjugated Goat Anti-Rabbit IgG(H+L) (SA00013-2).



Immunofluorescent analysis of (-20°C Ethanol) fixed HeLa cells using IGFBP2 antibody (15699-1-AP) at dilution of 1:400 and CoraLite@488-Conjugated Goat Anti-Rabbit IgG(H+L) (SA00013-2).