

For Research Use Only

# AMPD2 Polyclonal antibody

Catalog Number: 15710-1-AP **1 Publications**



## Basic Information

<b>Catalog Number:</b> 15710-1-AP	<b>GenBank Accession Number:</b> BC007711	<b>Purification Method:</b> Antigen affinity purification
<b>Size:</b> 150ul , Concentration: 400 µg/ml by Nanodrop and 293 µg/ml by Bradford method using BSA as the standard;	<b>GeneID (NCBI):</b> 271	<b>Recommended Dilutions:</b> WB 1:500-1:2400 IHC 1:100-1:400
<b>Source:</b> Rabbit	<b>Full Name:</b> adenosine monophosphate deaminase 2 (isoform L)	
<b>Isotype:</b> IgG	<b>Calculated MW:</b> 879aa,101 kDa; 798aa,92 kDa	
<b>Immunogen Catalog Number:</b> AG8335	<b>Observed MW:</b> 101 kDa	

## Applications

<b>Tested Applications:</b> IHC, WB,ELISA	<b>Positive Controls:</b> WB : human liver tissue, IHC : human cerebellum tissue,
<b>Cited Applications:</b> IHC	
<b>Species Specificity:</b> human, mouse, rat	
<b>Cited Species:</b> human	

**Note-IHC: suggested antigen retrieval with TE buffer pH 9.0; (\*) Alternatively, antigen retrieval may be performed with citrate buffer pH 6.0**

## Background Information

Adenosine monophosphate deaminase (AMPD) catalyzes the deamination of AMP to IMP and plays an important role in the purine nucleotide cycle. Three AMPDs are present in mammals named AMPD1/2/3. AMPD2 is the main activity present in adult human liver and is widely expressed in non-muscle tissues and cells (PMID: 8526848). AMPD2 has some isoforms with the molecular mass of 88-101 kDa.

## Notable Publications

Author	Pubmed ID	Journal	Application
Qi-Zhong Gao	32874974	World J Clin Cases	IHC

## Storage

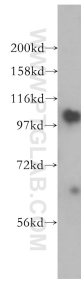
**Storage:**  
Store at -20°C. Stable for one year after shipment.  
**Storage Buffer:**  
PBS with 0.02% sodium azide and 50% glycerol pH 7.3.  
Aliquoting is unnecessary for -20°C storage

**\*\*\* 20ul sizes contain 0.1% BSA**

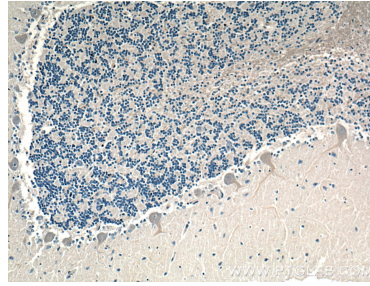
For technical support and original validation data for this product please contact:  
T: 1 (888) 4PTGLAB (1-888-478-4522) (toll free in USA), or 1(312) 455-8498 (outside USA)  
E: proteintech@ptglab.com  
W: ptglab.com

**This product is exclusively available under Proteintech Group brand and is not available to purchase from any other manufacturer.**

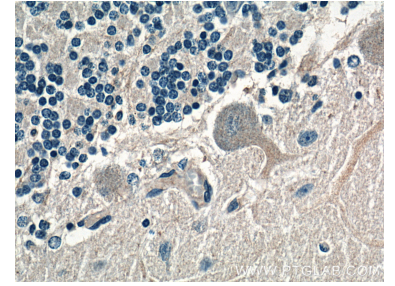
## Selected Validation Data



human liver tissue were subjected to SDS PAGE followed by western blot with 15710-1-AP (AMPD2 antibody) at dilution of 1:500 incubated at room temperature for 1.5 hours.



Immunohistochemical analysis of paraffin-embedded human cerebellum tissue slide using 15710-1-AP (AMPD2 Antibody) at dilution of 1:200 (under 10x lens).



Immunohistochemical analysis of paraffin-embedded human cerebellum tissue slide using 15710-1-AP (AMPD2 Antibody) at dilution of 1:200 (under 40x lens).