

For Research Use Only

AP2A2 Polyclonal antibody

Catalog Number: 15722-1-AP

1 Publications



Basic Information

Catalog Number:

15722-1-AP

Size:

150ul, Concentration: 300 ug/ml by Nanodrop and 267 ug/ml by Bradford method using BSA as the standard;

Source:

Rabbit

Isotype:

IgG

Immunogen Catalog Number:

AG8442

GenBank Accession Number:

BC006155

GeneID (NCBI):

161

UNIPROT ID:

O94973

Full Name:

adaptor-related protein complex 2, alpha 2 subunit

Calculated MW:

939 aa, 104 kDa

Observed MW:

104 kDa

Purification Method:

Antigen affinity purification

Recommended Dilutions:

WB 1:200-1:1000

IHC 1:20-1:200

Applications

Tested Applications:

WB, IHC, ELISA

Cited Applications:

WB

Species Specificity:

human, mouse, rat

Cited Species:

pig

Note-IHC: suggested antigen retrieval with TE buffer pH 9.0; (*) Alternatively, antigen retrieval may be performed with citrate buffer pH 6.0

Positive Controls:

WB : mouse brain tissue, rat brain tissue

IHC : human testis tissue,

Background Information

AP2A2, also named as ADTAB, CLAPA2, HIP9, HYPJ, or KIAA0899, is a 939 amino acid protein, which belongs to the adaptor complexes large subunit family. AP2A2 localizes in the membrane and is a component of the adaptor protein complex 2. AP2 adaptor complex linking clathrin to receptors in coated vesicles, clathrin-associated protein complexes are believed to interact with cytoplasmic domains of transmembrane proteins leading to their selection and concentration. AP2A2 is involved into cellular trafficking transport.

Notable Publications

Author	Pubmed ID	Journal	Application
Xin Chen	37254454	Emerg Microbes Infect	WB

Storage

Storage:

Store at -20°C. Stable for one year after shipment.

Storage Buffer:

PBS with 0.02% sodium azide and 50% glycerol pH 7.3.

Aliquoting is unnecessary for -20°C storage

*** 20ul sizes contain 0.1% BSA

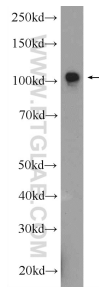
For technical support and original validation data for this product please contact:

T: 1 (888) 4PTGLAB (1-888-478-4522) (toll free in USA), or 1(312) 455-8498 (outside USA)

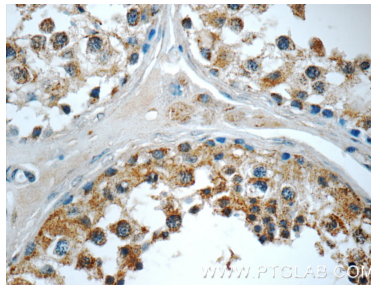
E: proteintech@ptglab.com
W: ptglab.com

This product is exclusively available under Proteintech Group brand and is not available to purchase from any other manufacturer.

Selected Validation Data



mouse brain tissue were subjected to SDS PAGE followed by western blot with 15722-1-AP (AP2A2 Antibody) at dilution of 1:300 incubated at room temperature for 1.5 hours.



Immunohistochemical analysis of paraffin-embedded human testis tissue slide using 15722-1-AP (AP2A2 Antibody) at dilution of 1:50 (under 40x lens).