

For Research Use Only

NUF2 Polyclonal antibody

Catalog Number:15731-1-AP

Featured Product

6 Publications



Basic Information

Catalog Number:

15731-1-AP

Size:

150ul , Concentration: 500 ug/ml by Nanodrop and 180 ug/ml by Bradford method using BSA as the standard;

Source:

Rabbit

Isotype:

IgG

Immunogen Catalog Number:

AG8479

GenBank Accession Number:

BC008489

GeneID (NCBI):

83540

UNIPROT ID:

Q9BZD4

Full Name:

NUF2, NDC80 kinetochore complex component, homolog (S. cerevisiae)

Calculated MW:

464 aa, 54 kDa

Observed MW:

50 kDa

Purification Method:

Antigen affinity purification

Recommended Dilutions:

WB 1:500-1:2000

IP 0.5-4.0 ug for 1.0-3.0 mg of total protein lysate

Applications

Tested Applications:

WB, IP, ELISA

Cited Applications:

WB, IHC

Species Specificity:

human

Cited Species:

human, mouse

Positive Controls:

WB : HEK-293 cells, HepG2 cells, HeLa cells, human liver tissue, human testis tissue, PC-3 cells, human skeletal muscle tissue

IP : HEK-293 cells,

Background Information

NUF2 (NUF2, Ndc80 kinetochore complex component) plays an important role in kinetochore-microtubule attachment. NUF2 was reported to be overexpressed in various kinds of carcinomas including lung cancer, cholangiocellular cancer, urinary bladder cancer, renal cell cancer, colorectal cancer, gastric cancer, ovarian cancer and serous adenocarcinoma. Elevated expression of NUF2 was associated with poorer prognosis of non-small cell lung cancer patients (PMID: 17079454). Knockdown of NUF2 significantly caused cell growth delay and increased apoptosis in cell lines of non-small cell lung cancer, colorectal cancer, gastric cancer and ovarian cancer.

Notable Publications

Author	Pubmed ID	Journal	Application
Jiatian Lin	35813477	Int J Biol Sci	WB,IHC
Min Wu	30655516	Nat Commun	
Xina Xie	33608495	Cell Death Dis	WB

Storage

Storage:

Store at -20°C. Stable for one year after shipment.

Storage Buffer:

PBS with 0.02% sodium azide and 50% glycerol pH 7.3.

Aliquoting is unnecessary for -20°C storage

*** 20ul sizes contain 0.1% BSA

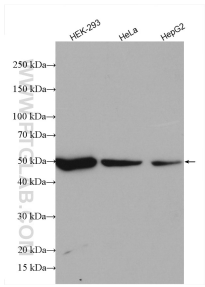
For technical support and original validation data for this product please contact:

T: 1 (888) 4PTGLAB (1-888-478-4522) (toll free in USA), or 1(312) 455-8498 (outside USA)

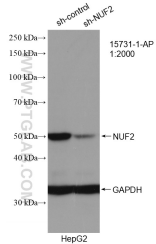
E: proteintech@ptglab.com
W: ptglab.com

This product is exclusively available under Proteintech Group brand and is not available to purchase from any other manufacturer.

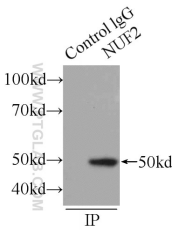
Selected Validation Data



Various lysates were subjected to SDS PAGE followed by western blot with 15731-1-AP (NUF2 antibody) at dilution of 1:1000 incubated at room temperature for 1.5 hours.



WB result of NUF2 antibody (15731-1-AP; 1:2000; incubated at room temperature for 1.5 hours) with sh-Control and sh-NUF2 transfected HepG2 cells.



IP result of anti-NUF2 (IP:15731-1-AP, 3ug; Detection:15731-1-AP 1:500) with HEK-293 cells lysate 1760ug.