

For Research Use Only

CLPB Polyclonal antibody

Catalog Number: 15743-1-AP

6 Publications



Basic Information

Catalog Number:

15743-1-AP

Size:

150ul, Concentration: 650 ug/ml by Nanodrop;

Source:

Rabbit

Isotype:

IgG

Immunogen Catalog Number:

AG8165

GenBank Accession Number:

BC006404

GeneID (NCBI):

81570

UNIPROT ID:

Q9H078

Full Name:

ClpB caseinolytic peptidase B homolog (E. coli)

Calculated MW:

707 aa, 79 kDa

Observed MW:

58 kDa

Purification Method:

Antigen affinity purification

Recommended Dilutions:

WB 1:500-1:2000

IHC 1:100-1:400

IF/ICC 1:200-1:800

Applications

Tested Applications:

WB, IHC, IF/ICC, ELISA

Cited Applications:

WB, IHC

Species Specificity:

human, mouse, rat

Cited Species:

human, mouse, rat

Note-IHC: suggested antigen retrieval with TE buffer pH 9.0; (*) Alternatively, antigen retrieval may be performed with citrate buffer pH 6.0

Positive Controls:

WB : COLO 320 cells, HeLa cells, Jurkat cells, K-562 cells

IHC : human heart tissue,

IF/ICC : HeLa cells,

Background Information

CLPB encodes a protein of 707 aa with a predicted molecular mass of approximately 79 kDa, presenting two conserved ATP-binding domains. CLPB is a member of the AAA+ protein family. This potential internal translation initiation site suggests that a smaller form of ClpB, with a theoretical molecular mass of approximately 58 kDa, may be produced. (PMID: 25597510, PMID: 255957260)

Notable Publications

Author	Pubmed ID	Journal	Application
Takahiro Yoshinaka	31522117	iScience	WB
Ryan R Cupo	32573439	Elife	WB
Tomasz Wenta	39644357	Apoptosis	WB

Storage

Storage:

Store at -20°C. Stable for one year after shipment.

Storage Buffer:

PBS with 0.02% sodium azide and 50% glycerol pH 7.3.

Aliquoting is unnecessary for -20°C storage

*** 20ul sizes contain 0.1% BSA

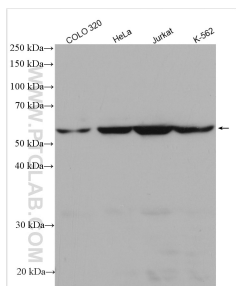
For technical support and original validation data for this product please contact:

T: 1 (888) 4PTGLAB (1-888-478-4522) (toll free in USA), or 1(312) 455-8498 (outside USA)

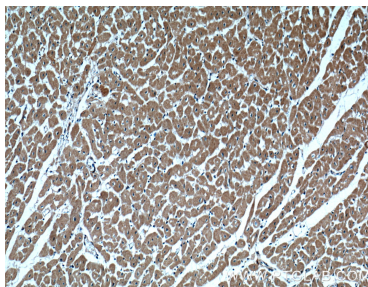
E: proteintech@ptglab.com
W: ptglab.com

This product is exclusively available under Proteintech Group brand and is not available to purchase from any other manufacturer.

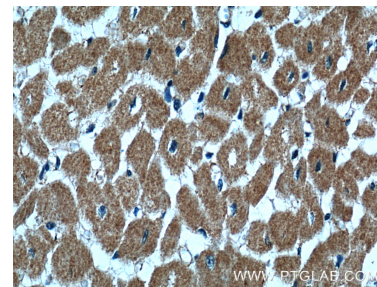
Selected Validation Data



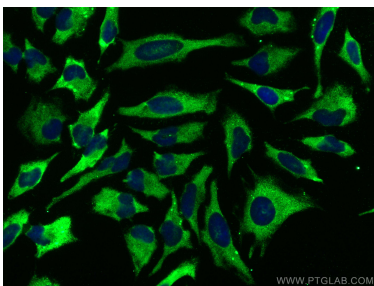
Various lysates were subjected to SDS PAGE followed by western blot with 15743-1-AP (CLPB antibody) at dilution of 1:1000 incubated at room temperature for 1.5 hours.



Immunohistochemical analysis of paraffin-embedded human heart tissue slide using 15743-1-AP (CLPB Antibody) at dilution of 1:200 (under 10x lens).



Immunohistochemical analysis of paraffin-embedded human heart tissue slide using 15743-1-AP (CLPB Antibody) at dilution of 1:200 (under 40x lens).



Immunofluorescent analysis of (-20°C Methanol) fixed HeLa cells using CLPB antibody (15743-1-AP) at dilution of 1:400 and CoraLite®488-Conjugated Goat Anti-Rabbit IgG(H+L).