

For Research Use Only

RPL18A Polyclonal antibody

Catalog Number: 15751-1-AP



Basic Information

Catalog Number:

15751-1-AP

Size:

150ul , Concentration: 240 ug/ml by Nanodrop and 200 ug/ml by Bradford method using BSA as the standard;

Source:

Rabbit

Isotype:

IgG

Immunogen Catalog Number:

AG8251

GenBank Accession Number:

BC007512

GeneID (NCBI):

6142

UNIPROT ID:

Q02543

Full Name:

ribosomal protein L18a

Calculated MW:

21 kDa

Observed MW:

21 kDa

Purification Method:

Antigen affinity purification

Recommended Dilutions:

WB 1:500-1:2000

IP 0.5-4.0 ug for 1.0-3.0 mg of total protein lysate

IHC 1:20-1:200

Applications

Tested Applications:

WB, IP, IHC, ELISA

Species Specificity:

human, mouse, rat

Note-IHC: suggested antigen retrieval with TE buffer pH 9.0; (*) Alternatively, antigen retrieval may be performed with citrate buffer pH 6.0

Positive Controls:

WB : HeLa cells, Jurkat cells, NIH/3T3 cells, mouse brain tissue, rat brain tissue

IP : Jurkat cells,

IHC : human brain tissue,

Storage

Storage:

Store at -20°C. Stable for one year after shipment.

Storage Buffer:

PBS with 0.02% sodium azide and 50% glycerol pH 7.3.

Aliquoting is unnecessary for -20°C storage

*** 20ul sizes contain 0.1% BSA

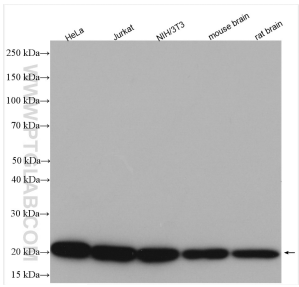
For technical support and original validation data for this product please contact:

T: 1 (888) 4PTGLAB (1-888-478-4522) (toll free in USA), or 1(312) 455-8498 (outside USA)

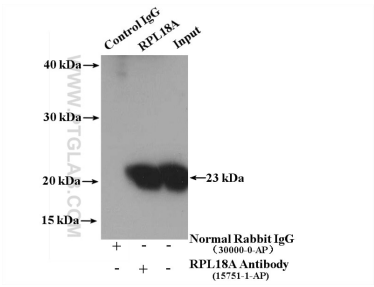
E: proteintech@ptglab.com
W: ptglab.com

This product is exclusively available under Proteintech Group brand and is not available to purchase from any other manufacturer.

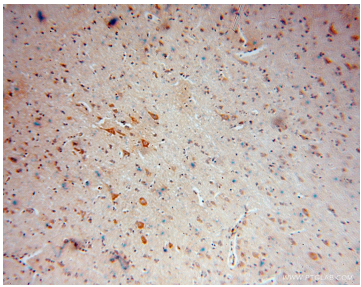
Selected Validation Data



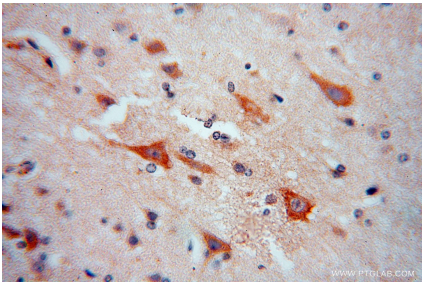
Various lysates were subjected to SDS PAGE followed by western blot with 15751-1-AP (RPL18A antibody) at dilution of 1:1000 incubated at room temperature for 1.5 hours.



IP result of anti-RPL18A (IP:15751-1-AP, 4ug; Detection:15751-1-AP 1:500) with Jurkat cells lysate 3200 ug.



Immunohistochemical analysis of paraffin-embedded human brain using 15751-1-AP (RPL18A antibody) at dilution of 1:100 (under 10x lens).



Immunohistochemical analysis of paraffin-embedded human brain using 15751-1-AP (RPL18A antibody) at dilution of 1:100 (under 40x lens).