

For Research Use Only

MID1IP1 Polyclonal antibody

Catalog Number: 15764-1-AP

Featured Product

6 Publications



Basic Information

Catalog Number:

15764-1-AP

Size:

150ul, Concentration: 300 ug/ml by Nanodrop and 200 ug/ml by Bradford method using BSA as the standard;

Source:

Rabbit

Isotype:

IgG

Immunogen Catalog Number:

AG8400

GenBank Accession Number:

BC008908

GeneID (NCBI):

58526

UNIPROT ID:

Q9NPA3

Full Name:

MID1 interacting protein 1 (gastrulation specific G12 homolog (zebrafish))

Calculated MW:

183 aa, 20 kDa

Observed MW:

23 kDa, 46 kDa

Purification Method:

Antigen affinity purification

Recommended Dilutions:

WB 1:200-1:1000

Applications

Tested Applications:

WB, ELISA

Cited Applications:

WB, IHC, IF

Species Specificity:

human, mouse, rat

Cited Species:

human

Positive Controls:

WB : HEK-293 cells,

Background Information

MID1IP1, also named as Mid1-interacting protein 1 or Gastrulation-specific G12-like protein, is a 183 amino acid protein, which belongs to the SPOT14 family. MID1IP1 plays a role in the regulation of lipogenesis in liver. MID1IP1 may localizes in the nucleus and cytoplasm. MID1IP1 may form Homodimer in the absence of THRSP.

Notable Publications

Author	Pubmed ID	Journal	Application
Ji Hoon Jung	34680125	Biomolecules	WB
Hyun Min Ko	36233202	Int J Mol Sci	WB
Hyun Min Ko	36569330	Front Pharmacol	WB

Storage

Storage:

Store at -20°C. Stable for one year after shipment.

Storage Buffer:

PBS with 0.02% sodium azide and 50% glycerol pH 7.3.

Aliquoting is unnecessary for -20°C storage

*** 20ul sizes contain 0.1% BSA

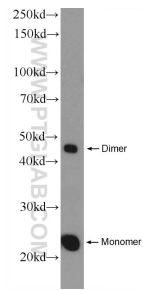
For technical support and original validation data for this product please contact:

T: 1 (888) 4PTGLAB (1-888-478-4522) (toll free in USA), or 1(312) 455-8498 (outside USA)

E: proteintech@ptglab.com
W: ptglab.com

This product is exclusively available under Proteintech Group brand and is not available to purchase from any other manufacturer.

Selected Validation Data



HEK-293 cells were subjected to SDS PAGE followed by western blot with 15764-1-AP (MID1IP1 Antibody) at dilution of 1:300 incubated at room temperature for 1.5 hours.