

For Research Use Only

RAB3B/C Polyclonal antibody

Catalog Number: 15774-1-AP

5 Publications



Basic Information

Catalog Number:

15774-1-AP

Size:

150ul, Concentration: 240 ug/ml by Nanodrop and 180 ug/ml by Bradford method using BSA as the standard;

Source:

Rabbit

Isotype:

IgG

Immunogen Catalog Number:

AG8441

GenBank Accession Number:

BC005035

GeneID (NCBI):

5865

UNIPROT ID:

P20337

Full Name:

RAB3B, member RAS oncogene family

Calculated MW:

219 aa, 25 kDa

Observed MW:

25 kDa

Purification Method:

Antigen affinity purification

Recommended Dilutions:

WB 1:1000-1:6000

IHC 1:20-1:200

IF/ICC 1:20-1:200

Applications

Tested Applications:

WB, IHC, IF/ICC, FC (Intra), ELISA

Cited Applications:

WB, IHC, IF

Species Specificity:

human, mouse, rat

Cited Species:

human, mouse

Note-IHC: suggested antigen retrieval with TE buffer pH 9.0; (*) Alternatively, antigen retrieval may be performed with citrate buffer pH 6.0

Positive Controls:

WB : mouse brain tissue, human brain tissue, U-251 cells, rat brain tissue

IHC : human colon cancer tissue, human pancreas tissue

IF/ICC : HeLa cells,

Notable Publications

Author	Pubmed ID	Journal	Application
Jimena Monzón-Sandoval	32167609	Ann Neurol	WB
Gaynor A Smith	24728190	Hum Mol Genet	WB
Xu-Sheng Liu	38688977	Sci Rep	IHC

Storage

Storage:

Store at -20°C. Stable for one year after shipment.

Storage Buffer:

PBS with 0.02% sodium azide and 50% glycerol pH 7.3.

Aliquoting is unnecessary for -20°C storage

*** 20ul sizes contain 0.1% BSA

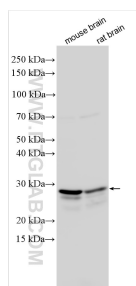
For technical support and original validation data for this product please contact:

T: 1 (888) 4PTGLAB (1-888-478-4522) (toll free in USA), or 1(312) 455-8498 (outside USA)

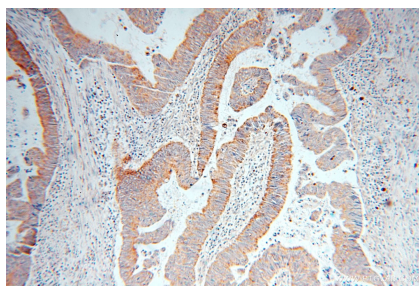
E: proteintech@ptglab.com
W: ptglab.com

This product is exclusively available under Proteintech Group brand and is not available to purchase from any other manufacturer.

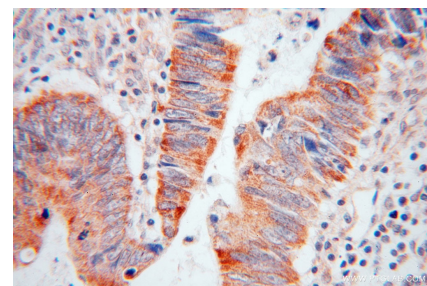
Selected Validation Data



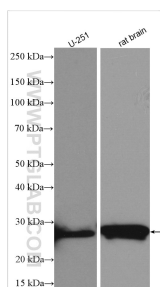
Various lysates were subjected to SDS PAGE followed by western blot with 15774-1-AP (RAB3B/C antibody) at dilution of 1:3000 incubated at room temperature for 1.5 hours.



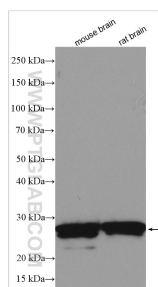
Immunohistochemical analysis of paraffin-embedded human colon cancer using 15774-1-AP (RAB3B antibody) at dilution of 1:50 (under 10x lens).



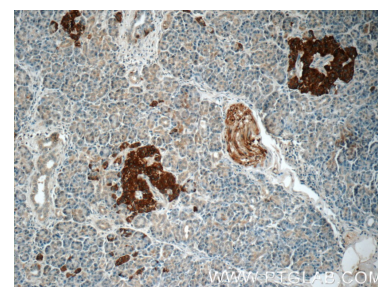
Immunohistochemical analysis of paraffin-embedded human colon cancer using 15774-1-AP (RAB3B antibody) at dilution of 1:50 (under 40x lens).



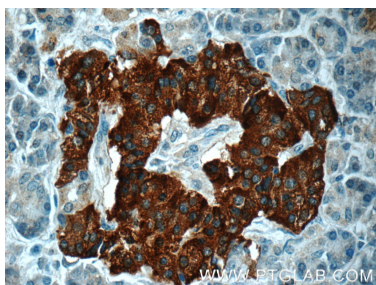
Various lysates were subjected to SDS PAGE followed by western blot with 15774-1-AP (RAB3B antibody) at dilution of 1:1000 incubated at room temperature for 1.5 hours.



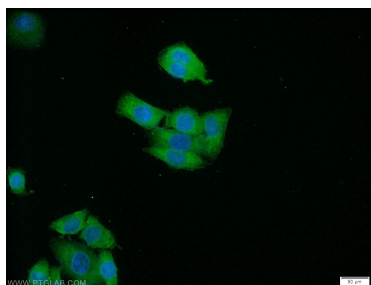
Various lysates were subjected to SDS PAGE followed by western blot with 15774-1-AP (RAB3B antibody) at dilution of 1:1000 incubated at room temperature for 1.5 hours.



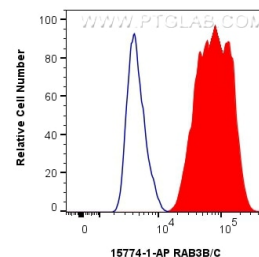
Immunohistochemical analysis of paraffin-embedded human pancreas tissue slide using 15774-1-AP (RAB3B Antibody) at dilution of 1:50 (under 10x lens).



Immunohistochemical analysis of paraffin-embedded human pancreas tissue slide using 15774-1-AP (RAB3B Antibody) at dilution of 1:50 (under 40x lens).



Immunofluorescent analysis of HeLa cells using 15774-1-AP (RAB3B antibody) at dilution of 1:50 and Alexa Fluor 488-conjugated AffiniPure Goat Anti-Rabbit IgG(H+L).



1×10^6 HepG2 cells were intracellularly stained with 0.25 μ g RAB3B/C Polyclonal antibody (15774-1-AP) and CoraLite®488-Conjugated Goat Anti-Rabbit IgG(H+L) (SA00013-2)(red), or 0.25 μ g Rabbit IgG control Rabbit PolyAb (30000-O-AP) (blue). Cells were fixed with 4% PFA and permeabilized with Flow Cytometry Perm Buffer (PF00011-C).