

For Research Use Only

HTRA2 Polyclonal antibody

Catalog Number: 15775-1-AP

Featured Product

17 Publications



Basic Information

Catalog Number:

15775-1-AP

Size:

150ul, Concentration: 700 ug/ml by Nanodrop;

Source:

Rabbit

Isotype:

IgG

Immunogen Catalog Number:

AG8455

GenBank Accession Number:

BC000096

GeneID (NCBI):

27429

UNIPROT ID:

O43464

Full Name:

HtrA serine peptidase 2

Calculated MW:

49 kDa

Observed MW:

36 kDa

Purification Method:

Antigen affinity purification

Recommended Dilutions:

WB 1:2000-1:12000

IP 0.5-4.0 ug for 1.0-3.0 mg of total protein lysate

IHC 1:20-1:200

Applications

Tested Applications:

WB, IP, IHC, ELISA

Cited Applications:

WB, IHC, IF

Species Specificity:

human, mouse, rat, monkey

Cited Species:

human, mouse, rat, chicken, hamster

Note-IHC: suggested antigen retrieval with TE buffer pH 9.0; (*) Alternatively, antigen retrieval may be performed with citrate buffer pH 6.0

Positive Controls:

WB: HeLa cells, human heart tissue, mouse skeletal muscle tissue, Raji cells, MCF-7 cells, Jurkat cells, HEK-293 cells, SH-SY5Y cells, COS-7 cells, Neuro-2a cells

IP: Raji cells,

IHC: human kidney tissue, human colon tissue, human thyroid tissue

Background Information

HTRA2(High temperature requirement protein A2) is also named as OMI, PRSS25 and belongs to the peptidase S1B family. HTRA2 normally exists in the mitochondria, can cause MMP3 activation in the cytosol under a cell stress condition, which can ultimately lead to demise of dopaminergic neuronal cells(PMID: 22265821). It inhibits mitochondrial superoxide generation, stabilizes mitochondrial membrane potential, and prevents apoptosis at baseline and in response to extracellular inducers of mitochondrial stress(PMID: 18772386). This protein has 4 isoforms produced by alternative splicing.

Notable Publications

Author	Pubmed ID	Journal	Application
Aaron Botham	31617661	Proteomics	WB
Yucong Xue	33173965	Mol Med Rep	IHC
Hongying Xu	31155149	Neuropeptides	WB,IHC

Storage

Storage:

Store at -20°C. Stable for one year after shipment.

Storage Buffer:

PBS with 0.02% sodium azide and 50% glycerol pH 7.3.

Aliquoting is unnecessary for -20°C storage

*** 20ul sizes contain 0.1% BSA

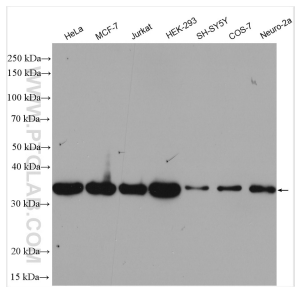
For technical support and original validation data for this product please contact:

T: 1 (888) 4PTGLAB (1-888-478-4522) (toll free in USA), or 1(312) 455-8498 (outside USA)

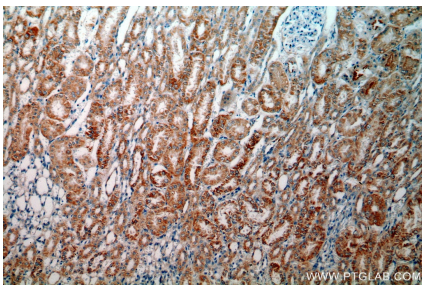
E: proteintech@ptglab.com
W: ptglab.com

This product is exclusively available under Proteintech Group brand and is not available to purchase from any other manufacturer.

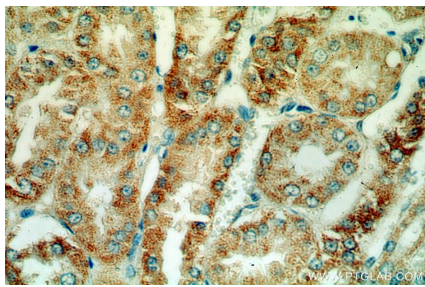
Selected Validation Data



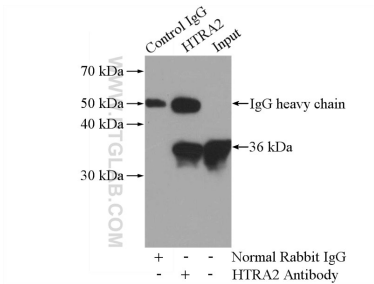
HeLa cells were subjected to SDS PAGE followed by western blot with 15775-1-AP (HTRA2 antibody) at dilution of 1:6000 incubated at room temperature for 1.5 hours.



Immunohistochemical analysis of paraffin-embedded human kidney using 15775-1-AP (HTRA2 antibody) at dilution of 1:100 (under 10x lens).



Immunohistochemical analysis of paraffin-embedded human kidney using 15775-1-AP (HTRA2 antibody) at dilution of 1:100 (under 40x lens).



IP result of anti-HTRA2 (IP:15775-1-AP, 4ug; Detection:15775-1-AP 1:500) with Raji cells lysate 2000ug.