

For Research Use Only

# PIN4 Polyclonal antibody

Catalog Number: 15789-1-AP

Featured Product

1 Publications



## Basic Information

### Catalog Number:

15789-1-AP

### Size:

150ul, Concentration: 450 ug/ml by Nanodrop and 160 ug/ml by Bradford method using BSA as the standard;

### Source:

Rabbit

### Isotype:

IgG

### Immunogen Catalog Number:

AG8489

### GenBank Accession Number:

BC005234

### GeneID (NCBI):

5303

### UNIPROT ID:

Q9Y237

### Full Name:

protein (peptidylprolyl cis/trans isomerase) NIMA-interacting, 4 (parvulin)

### Calculated MW:

131 aa, 14 kDa

### Observed MW:

14 kDa

### Purification Method:

Antigen affinity purification

### Recommended Dilutions:

WB 1:500-1:1000

IHC 1:50-1:500

IF/ICC 1:50-1:500

## Applications

### Tested Applications:

WB, IHC, IF/ICC, ELISA

### Cited Applications:

WB

### Species Specificity:

human, mouse, rat

### Cited Species:

human

**Note-IHC: suggested antigen retrieval with TE buffer pH 9.0; (\*) Alternatively, antigen retrieval may be performed with citrate buffer pH 6.0**

### Positive Controls:

**WB** : mouse liver tissue, HeLa cells, mouse brain tissue, mouse kidney tissue

**IHC** : human liver cancer tissue, human kidney tissue, human liver tissue

**IF/ICC** : HepG2 cells,

## Background Information

PIN4, also known as EPVH, hPar14, is a member of the parvulin subfamily of the peptidyl-prolyl cis/trans isomerase protein family. PIN4 is the first eukaryotic member of the parvulin family of PPIases and contains a PPIase domain preceded by a 40-amino acid glycine- and lysine-rich N-terminal sequence.

## Notable Publications

Author	Pubmed ID	Journal	Application
Miki Naito	36583514	Cancer Med	WB

## Storage

### Storage:

Store at -20°C. Stable for one year after shipment.

### Storage Buffer:

PBS with 0.02% sodium azide and 50% glycerol pH 7.3.

Aliquoting is unnecessary for -20°C storage

\*\*\* 20ul sizes contain 0.1% BSA

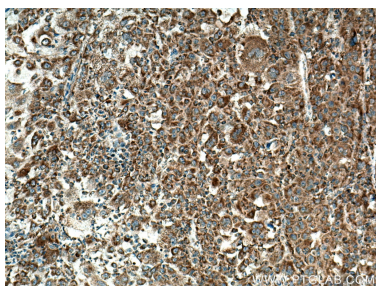
For technical support and original validation data for this product please contact:

T: 1 (888) 4PTGLAB (1-888-478-4522) (toll free in USA), or 1(312) 455-8498 (outside USA)

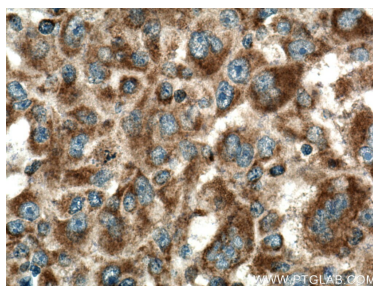
E: [proteintech@ptglab.com](mailto:proteintech@ptglab.com)  
W: [ptglab.com](http://ptglab.com)

This product is exclusively available under Proteintech Group brand and is not available to purchase from any other manufacturer.

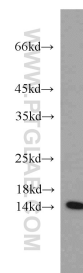
## Selected Validation Data



Immunohistochemical analysis of paraffin-embedded human liver cancer tissue slide using 15789-1-AP (PIN4 antibody) at dilution of 1:200 (under 10x lens). Heat mediated antigen retrieval with Tris-EDTA buffer (pH 9.0).



Immunohistochemical analysis of paraffin-embedded human liver cancer tissue slide using 15789-1-AP (PIN4 antibody) at dilution of 1:200 (under 40x lens). Heat mediated antigen retrieval with Tris-EDTA buffer (pH 9.0).



mouse liver tissue were subjected to SDS PAGE followed by western blot with 15789-1-AP (PIN4 antibody) at dilution of 1:500 incubated at room temperature for 1.5 hours.



Immunofluorescent analysis of (-20°C Ethanol) fixed HepG2 cells using PIN4 antibody (15789-1-AP) at dilution of 1:200 and Multi-rAb CoraLite ® Plus 488-Goat Anti-Rabbit Recombinant Secondary Antibody (H+L) (RGAR002).