

For Research Use Only

CIP29 Polyclonal antibody

Catalog Number: 15798-1-AP **2 Publications**



Basic Information

Catalog Number: 15798-1-AP	GenBank Accession Number: BC007099	Purification Method: Antigen affinity purification
Size: 150ul , Concentration: 500 µg/ml by Nanodrop;	GeneID (NCBI): 84324	Recommended Dilutions: WB 1:5000-1:50000 IF 1:200-1:800
Source: Rabbit	Full Name: cytokine induced protein 29 kDa	
Isotype: IgG	Calculated MW: 210 aa, 24 kDa	
Immunogen Catalog Number: AG8507	Observed MW: 29-32 kDa	

Applications

Tested Applications: IF, WB, ELISA	Positive Controls: WB : HEK-293 cells, Raji cells, rat pancreas tissue, HeLa cells, MCF-7 cells IF : MCF-7 cells,
Cited Applications: IF, WB	
Species Specificity: human, mouse, rat	
Cited Species: human	

Background Information

Notable Publications

Author	Pubmed ID	Journal	Application
Lingcai Zhao	36084138	PLoS Pathog	WB,IF
Ying Zhu	27492604	Tumour Biol	WB

Storage

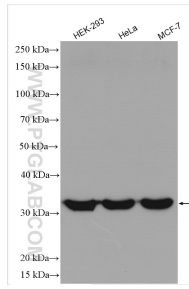
Storage:
Store at -20°C. Stable for one year after shipment.
Storage Buffer:
PBS with 0.02% sodium azide and 50% glycerol pH 7.3.
Aliquoting is unnecessary for -20°C storage

*** 20ul sizes contain 0.1% BSA

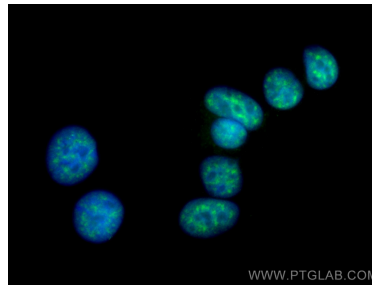
For technical support and original validation data for this product please contact:
T: 1 (888) 4PTGLAB (1-888-478-4522) (toll free in USA), or 1(312) 455-8498 (outside USA)
E: proteintech@ptglab.com
W: ptglab.com

This product is exclusively available under Proteintech Group brand and is not available to purchase from any other manufacturer.

Selected Validation Data



Various lysates were subjected to SDS PAGE followed by western blot with 15798-1-AP (CIP29 antibody) at dilution of 1:15000 incubated at room temperature for 1.5 hours.



Immunofluorescent analysis of (4% PFA) fixed MCF-7 cells using CIP29 antibody (15798-1-AP) at dilution of 1:400 and CoraLite®488-Conjugated AffiniPure Goat Anti-Rabbit IgG(H+L).



Immunofluorescent analysis of (4% PFA) fixed MCF-7 cells using CIP29 antibody (15798-1-AP) at dilution of 1:400 and CoraLite®488-Conjugated AffiniPure Goat Anti-Rabbit IgG(H+L).