

For Research Use Only

RFK Polyclonal antibody

Catalog Number: 15813-1-AP

3 Publications



Basic Information

Catalog Number:

15813-1-AP

Size:

150ul, Concentration: 173 ug/ml by Bradford method using BSA as the standard;

Source:

Rabbit

Isotype:

IgG

Immunogen Catalog Number:

AG8591

GenBank Accession Number:

BC007069

GeneID (NCBI):

55312

UNIPROT ID:

Q969G6

Full Name:

riboflavin kinase

Calculated MW:

162 aa, 18 kDa

Observed MW:

18 kDa

Purification Method:

Antigen affinity purification

Recommended Dilutions:

WB 1:500-1:2000

Applications

Tested Applications:

WB, ELISA

Cited Applications:

WB

Species Specificity:

human, mouse, rat

Cited Species:

mouse

Positive Controls:

WB : HeLa cells, Jurkat cells

Background Information

Riboflavin kinase (RFK) is an essential enzyme that catalyzes the phosphorylation of riboflavin (vitamin B2) to form flavin mononucleotide (FMN), an obligatory step in vitamin B2 utilization and flavin cofactor synthesis (PMID:12623014). RFK is rate-limiting in the synthesis of FAD, an essential prosthetic group of NADPH oxidase.

Notable Publications

Author	Pubmed ID	Journal	Application
Michail S Kukharsky	32467583	Transl Psychiatry	WB
Mengran Zhang	36799538	Adv Sci (Weinh)	WB
Schramm Michael M	24272050	Eur J Immunol	WB

Storage

Storage:

Store at -20°C. Stable for one year after shipment.

Storage Buffer:

PBS with 0.02% sodium azide and 50% glycerol pH 7.3.

Aliquoting is unnecessary for -20°C storage

*** 20ul sizes contain 0.1% BSA

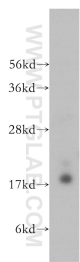
For technical support and original validation data for this product please contact:

T: 1 (888) 4PTGLAB (1-888-478-4522) (toll free in USA), or 1(312) 455-8498 (outside USA)

E: proteintech@ptglab.com
W: ptglab.com

This product is exclusively available under Proteintech Group brand and is not available to purchase from any other manufacturer.

Selected Validation Data



HeLa cells were subjected to SDS PAGE followed by western blot with 15813-1-AP (RFK antibody) at dilution of 1:500 incubated at room temperature for 1.5 hours.