

For Research Use Only

INS Polyclonal antibody

Catalog Number: 15848-1-AP

89 Publications



Basic Information

Catalog Number:

15848-1-AP

Size:

150ul, Concentration: 500 ug/ml by Nanodrop;

Source:

Rabbit

Isotype:

IgG

Immunogen Catalog Number:

AG8630

GenBank Accession Number:

BC005255

GeneID (NCBI):

3630

UNIPROT ID:

P01308

Full Name:

INS

Calculated MW:

110 aa, 12 kDa

Purification Method:

Antigen affinity purification

Recommended Dilutions:

IHC: 1:500-1:2000

IF-P: 1:50-1:500

Applications

Tested Applications:

IHC, IF-P, ELISA

Cited Applications:

IHC, IF, ELISA

Species Specificity:

human, mouse, rat

Cited Species:

human, mouse, rat, zebrafish

Note-IHC: suggested antigen retrieval with TE buffer pH 9.0; (*) Alternatively, antigen retrieval may be performed with citrate buffer pH 6.0

Positive Controls:

IHC: mouse pancreas tissue, human pancreas tissue, rat pancreas tissue

IF-P: human pancreas tissue, mouse pancreas tissue, rat pancreas tissue

Background Information

INS is a peptide hormone, produced by beta cells of the pancreas, and is central to regulating carbohydrate and fat metabolism in the body. It participates in glucose utilization, protein synthesis and in the formation and storage of neutral lipids. INS is synthesized as a precursor molecule, proinsulin, which is processed prior to secretion. A- and B-peptides are joined together by a disulfide bond to form INS, while the central portion of the precursor molecule is cleaved and released as the C-peptide. Defects in INS results in type 1 diabetes mellitus.

Notable Publications

Author	Pubmed ID	Journal	Application
Lilia Maneva-Radicheva	25259810	PLoS One	IHC
Shan-Ying Wu	36109708	Autophagy	IF
Mengqiu Wu	31485878	Apoptosis	IHC

Storage

Storage:

Store at -20°C. Stable for one year after shipment.

Storage Buffer:

PBS with 0.02% sodium azide and 50% glycerol, pH7.3

Aliquoting is unnecessary for -20°C storage

*** 20ul sizes contain 0.1% BSA

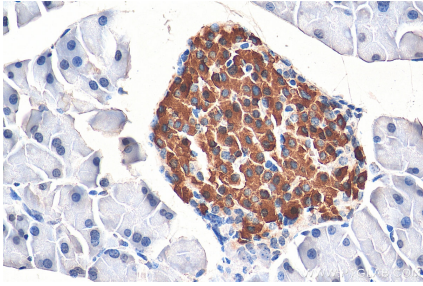
For technical support and original validation data for this product please contact:

T: 1 (888) 4PTGLAB (1-888-478-4522) (toll free in USA), or 1(312) 455-8498 (outside USA)

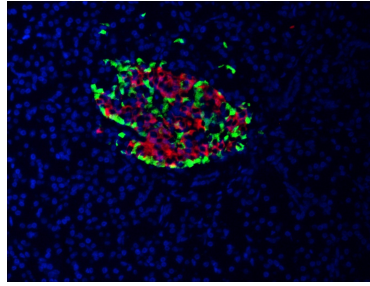
E: proteintech@ptglab.com
W: ptglab.com

This product is exclusively available under Proteintech Group brand and is not available to purchase from any other manufacturer.

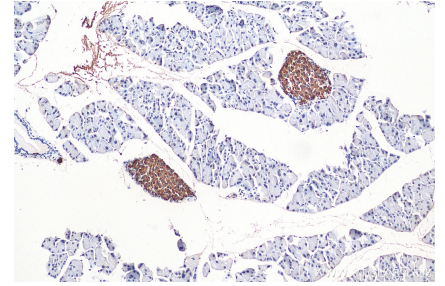
Selected Validation Data



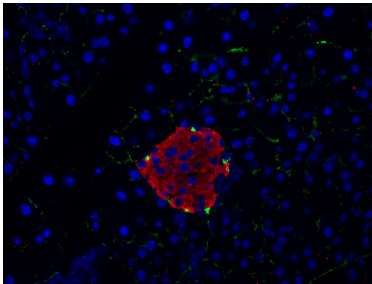
Immunohistochemical analysis of paraffin-embedded mouse pancreas tissue slide using 15848-1-AP (INS antibody) at dilution of 1:1000 (under 40x lens). Heat mediated antigen retrieval with Tris-EDTA buffer (pH 9.0).



Immunofluorescent analysis of (4% PFA) fixed human pancreas tissue using 15848-1-AP (INS antibody) at dilution of 1:100 and CoraLite594-Conjugated AffiniPure Goat Anti-Rabbit IgG(H+L). The α cells of the islets of Langerhans was labelled in green with 67286-1-Ig (Glucagon antibody).



Immunohistochemical analysis of paraffin-embedded mouse pancreas tissue slide using 15848-1-AP (INS antibody) at dilution of 1:1000 (under 10x lens). Heat mediated antigen retrieval with Tris-EDTA buffer (pH 9.0).



Immunofluorescent analysis of (4% PFA) fixed mouse pancreas tissue using 15848-1-AP (INS antibody), at dilution of 1:400 and CoraLite®594-Conjugated AffiniPure Goat Anti-Rabbit IgG(H+L). The α cells of the islets of Langerhans was labelled in green with CL488-67286.