

For Research Use Only

SF3A1 Polyclonal antibody

Catalog Number: 15858-1-AP

8 Publications



Basic Information

Catalog Number:

15858-1-AP

Size:

150ul, Concentration: 500 ug/ml by Nanodrop and 300 ug/ml by Bradford method using BSA as the standard;

Source:

Rabbit

Isotype:

IgG

Immunogen Catalog Number:

AG8196

GenBank Accession Number:

BC007684

GeneID (NCBI):

10291

UNIPROT ID:

Q15459

Full Name:

splicing factor 3a, subunit 1, 120kDa

Calculated MW:

793 aa, 89 kDa

Observed MW:

120-130 kDa

Purification Method:

Antigen affinity purification

Recommended Dilutions:

WB: 1:2000-1:10000

IP: 0.5-4.0 ug for 1.0-3.0 mg of total protein lysate

IHC: 1:20-1:200

IF/ICC: 1:10-1:100

Applications

Tested Applications:

WB, IHC, IF/ICC, IP, ELISA

Cited Applications:

WB, IHC, IP

Species Specificity:

human, mouse, rat

Cited Species:

human, mouse

Note-IHC: suggested antigen retrieval with TE buffer pH 9.0; (*) Alternatively, antigen retrieval may be performed with citrate buffer pH 6.0

Positive Controls:

WB: HL-60 cells, mouse brain tissue, HEK-293 cells, HeLa cells, mouse lung tissue, K-562 cells

IP: mouse brain tissue,

IHC: human breast cancer tissue,

IF/ICC: HepG2 cells,

Background Information

SF3A1, also known as SF3a120, is a 793 amino acid protein, which is a Subunit of the splicing factor SF3A required for 'A' complex assembly formed by the stable binding of U2 snRNP to the branchpoint sequence (BPS) in pre-mRNA. SF3A1 also be involved in the assembly of the 'E' complex. The calculated molecular weight of SF3A1 is 88 kDa, but the modified SF3A1 is about 115-120 kDa. (PMID: 7489498)

Notable Publications

Author	Pubmed ID	Journal	Application
Ni Li	36313296	Front Pharmacol	WB
Nir Kfir	25892229	Cell Rep	WB
Yiqiu Wang	40640337	Oncogene	IHC

Storage

Storage:

Store at -20°C. Stable for one year after shipment.

Storage Buffer:

PBS with 0.02% sodium azide and 50% glycerol, pH7.3

Aliquoting is unnecessary for -20°C storage

*** 20ul sizes contain 0.1% BSA

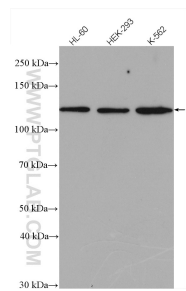
For technical support and original validation data for this product please contact:

T: 1 (888) 4PTGLAB (1-888-478-4522) (toll free in USA), or 1(312) 455-8498 (outside USA)

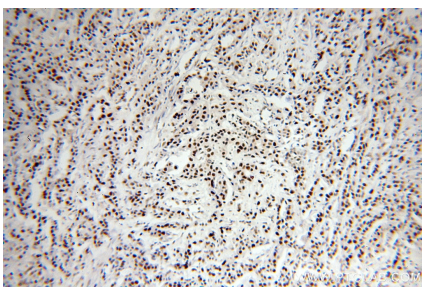
E: proteintech@ptglab.com
W: ptglab.com

This product is exclusively available under Proteintech Group brand and is not available to purchase from any other manufacturer.

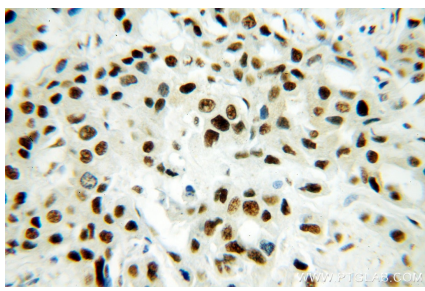
Selected Validation Data



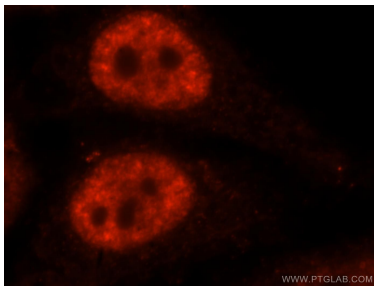
Various lysates were subjected to SDS PAGE followed by western blot with 15858-1-AP (SF3A1 antibody) at dilution of 1:5000 incubated at room temperature for 1.5 hours.



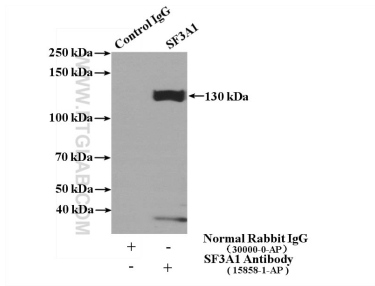
Immunohistochemical analysis of paraffin-embedded human breast cancer using 15858-1-AP (SF3A1 antibody) at dilution of 1:400 (under 10x lens).



Immunohistochemical analysis of paraffin-embedded human breast cancer using 15858-1-AP (SF3A1 antibody) at dilution of 1:400 (under 40x lens).



Immunofluorescent analysis of HepG2 cells, using SF3A1 antibody 15858-1-AP at 1:25 dilution and Rhodamine-labeled goat anti-rabbit IgG (red).



IP result of anti-SF3A1 (IP:15858-1-AP, 4ug; Detection:15858-1-AP 1:500) with mouse brain tissue lysate 4000ug.