

## HLA-DRB1 Polyclonal antibody

Catalog Number: 15862-1-AP

3 Publications

## Basic Information

## Catalog Number:

15862-1-AP

## Size:

150ul, Concentration: 600 µg/ml by Nanodrop and 353 µg/ml by Bradford method using BSA as the standard;

## Source:

Rabbit

## Isotype:

IgG

## Immunogen Catalog Number:

AG8405

## GenBank Accession Number:

BC007920

## GeneID (NCBI):

3123

## Full Name:

major histocompatibility complex, class II, DR beta 1

## Calculated MW:

266 aa, 30 kDa

## Observed MW:

27-30 kDa

## Purification Method:

Antigen affinity purification

## Recommended Dilutions:

WB 1:500-1:2000

IP 0.5-4.0 µg for IP and 1:500-1:1000 for WB

IHC 1:50-1:500

## Applications

## Tested Applications:

FC, IHC, IP, WB, ELISA

## Cited Applications:

WB

## Species Specificity:

human

## Cited Species:

human, mouse

**Note-IHC: suggested antigen retrieval with TE buffer pH 9.0; (\*) Alternatively, antigen retrieval may be performed with citrate buffer pH 6.0**

## Positive Controls:

WB: Raji cells, human spleen tissue, A375 cells, Daudi cells

IP: Raji cells,

IHC: human tonsillitis tissue,

## Background Information

## Notable Publications

Author	Pubmed ID	Journal	Application
Rupert L Mayer	36241641	Nat Commun	WB
Qian Gao	36578425	Heliyon	WB
Semini Geo G	24291779	Biochem Pharmacol	WB

## Storage

## Storage:

Store at -20°C. Stable for one year after shipment.

## Storage Buffer:

PBS with 0.02% sodium azide and 50% glycerol pH 7.3.

Aliquoting is unnecessary for -20°C storage

\*\*\* 20ul sizes contain 0.1% BSA

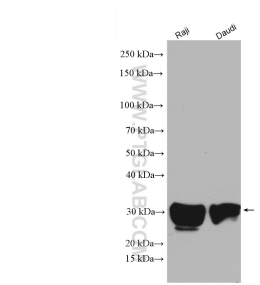
For technical support and original validation data for this product please contact:

T: 1 (888) 4PTGLAB (1-888-478-4522) (toll free in USA), or 1(312) 455-8498 (outside USA)

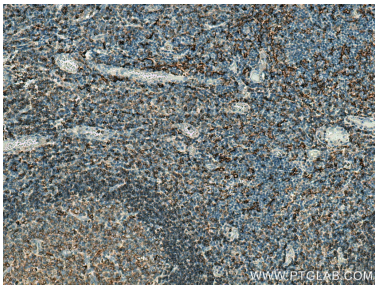
E: [proteintech@ptglab.com](mailto:proteintech@ptglab.com)W: [ptglab.com](http://ptglab.com)

This product is exclusively available under Proteintech Group brand and is not available to purchase from any other manufacturer.

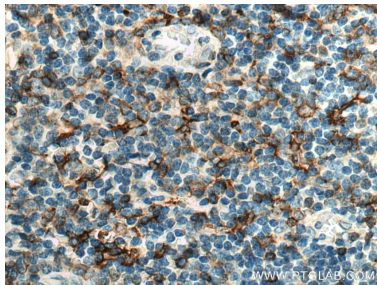
Selected Validation Data



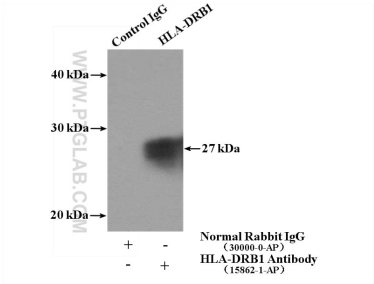
Various lysates were subjected to SDS PAGE followed by western blot with 15862-1-AP (HLA-DRB1 antibody) at dilution of 1:1000 incubated at room temperature for 1.5 hours.



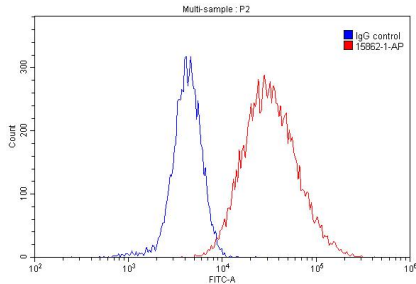
Immunohistochemical analysis of paraffin-embedded human tonsillitis tissue slide using 15862-1-AP (HLA-DRB1 antibody) at dilution of 1:200 (under 10x lens). Heat mediated antigen retrieval with Tris-EDTA buffer (pH 9.0).



Immunohistochemical analysis of paraffin-embedded human tonsillitis tissue slide using 15862-1-AP (HLA-DRB1 antibody) at dilution of 1:200 (under 40x lens). Heat mediated antigen retrieval with Tris-EDTA buffer (pH 9.0).



IP Result of anti-HLA-DRB1 (IP:15862-1-AP, 4ug; Detection:15862-1-AP 1:500) with Raji cells lysate 2000ug.



1X10<sup>6</sup> Raji cells were stained with 0.20ug HLA-DRB1 antibody (15862-1-AP, red) and control antibody (blue). Fixed with 90% MeOH.