

For Research Use Only

# RPS27L Polyclonal antibody

Catalog Number: 15871-1-AP

2 Publications



## Basic Information

### Catalog Number:

15871-1-AP

### Size:

150ul, Concentration: 700 ug/ml by Nanodrop and 333 ug/ml by Bradford method using BSA as the standard;

### Source:

Rabbit

### Isotype:

IgG

### Immunogen Catalog Number:

AG8628

### GenBank Accession Number:

BC003667

### GeneID (NCBI):

51065

### UNIPROT ID:

Q71UM5

### Full Name:

ribosomal protein S27-like

### Calculated MW:

84 aa, 10 kDa

### Observed MW:

10 kDa

### Purification Method:

Antigen affinity purification

### Recommended Dilutions:

WB 1:200-1:1000

IP 0.5-4.0 ug for 1.0-3.0 mg of total protein lysate

IHC 1:50-1:500

IF/ICC 1:50-1:500

## Applications

### Tested Applications:

WB, IHC, IF/ICC, IP, ELISA

### Cited Applications:

WB

### Species Specificity:

human, mouse, rat

### Cited Species:

human, mouse

**Note-IHC: suggested antigen retrieval with TE buffer pH 9.0; (\*) Alternatively, antigen retrieval may be performed with citrate buffer pH 6.0**

### Positive Controls:

WB : SH-SY5Y cells, mouse brain tissue, human heart tissue, HepG2 cells

IP : SH-SY5Y cells,

IHC : human stomach tissue,

IF/ICC : SH-SY5Y cells,

## Notable Publications

Author	Pubmed ID	Journal	Application
Adele Francis Xu	37306301	Elife	WB
Elena B Tikhonova	36210597	J Mol Biol	WB

## Storage

### Storage:

Store at -20°C. Stable for one year after shipment.

### Storage Buffer:

PBS with 0.02% sodium azide and 50% glycerol pH 7.3.

Aliquoting is unnecessary for -20°C storage

\*\*\* 20ul sizes contain 0.1% BSA

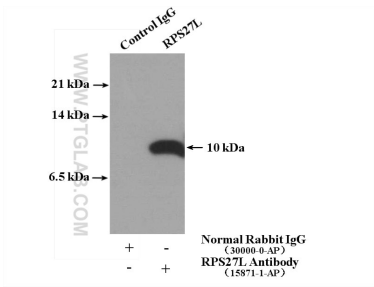
For technical support and original validation data for this product please contact:

T: 1 (888) 4PTGLAB (1-888-478-4522) (toll free in USA), or 1(312) 455-8498 (outside USA)

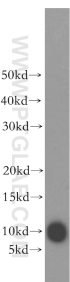
E: [proteintech@ptglab.com](mailto:proteintech@ptglab.com)  
W: [ptglab.com](http://ptglab.com)

This product is exclusively available under Proteintech Group brand and is not available to purchase from any other manufacturer.

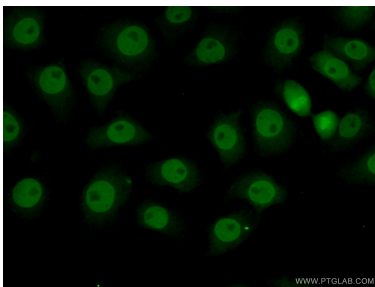
Selected Validation Data



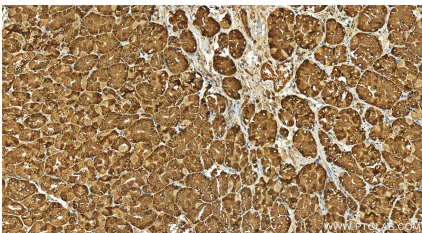
IP result of anti-RPS27L (IP:15871-1-AP, 4ug; Detection:15871-1-AP 1:300) with SH-SY5Y cells lysate 2160 ug.



SH-SY5Y cells were subjected to SDS PAGE followed by western blot with 15871-1-AP (RPS27L antibody) at dilution of 1:300 incubated at room temperature for 1.5 hours.



Immunofluorescent analysis of (10% Formaldehyde) fixed SH-SY5Y cells using 15871-1-AP (RPS27L antibody) at dilution of 1:50 and Alexa Fluor 488-conjugated AffiniPure Goat Anti-Rabbit IgG(H+L).



Immunohistochemical analysis of paraffin-embedded human stomach tissue slide using 15871-1-AP (RPS27L antibody) at dilution of 1:200 (under 20x lens). Heat mediated antigen retrieval with Tris-EDTA buffer (pH 9.0).