

For Research Use Only

# EIF1, EIF1B Polyclonal antibody

Catalog Number: 15887-1-AP



## Basic Information

**Catalog Number:**

15887-1-AP

**Size:**

150ul , Concentration: 240 ug/ml by Nanodrop and 213 ug/ml by Bradford method using BSA as the standard;

**Source:**

Rabbit

**Isotype:**

IgG

**Immunogen Catalog Number:**

AG8673

**GenBank Accession Number:**

BC006996

**GeneID (NCBI):**

10289

**UNIPROT ID:**

O60739

**Full Name:**

eukaryotic translation initiation factor 1B

**Calculated MW:**

113 aa, 13 kDa

**Observed MW:**

14 kDa

**Purification Method:**

Antigen affinity purification

**Recommended Dilutions:**

WB 1:200-1:1000

IHC 1:20-1:200

## Applications

**Tested Applications:**

WB, IHC, ELISA

**Species Specificity:**

human

**Note-IHC: suggested antigen retrieval with TE buffer pH 9.0; (\*) Alternatively, antigen retrieval may be performed with citrate buffer pH 6.0**

**Positive Controls:**

WB : L02 cells, HeLa cells, HepG2 cells

IHC : human kidney tissue,

## Storage

**Storage:**

Store at -20°C. Stable for one year after shipment.

**Storage Buffer:**

PBS with 0.02% sodium azide and 50% glycerol pH 7.3.

Aliquoting is unnecessary for -20°C storage

\*\*\* 20ul sizes contain 0.1% BSA

For technical support and original validation data for this product please contact:

T: 1 (888) 4PTGLAB (1-888-478-4522) (toll free in USA), or 1(312) 455-8498 (outside USA)

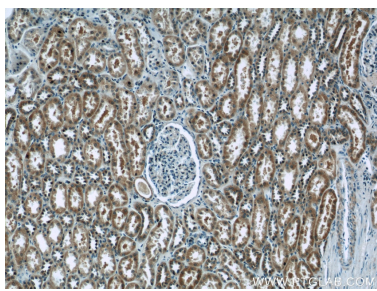
E: [proteintech@ptglab.com](mailto:proteintech@ptglab.com)  
W: [ptglab.com](http://ptglab.com)

This product is exclusively available under Proteintech Group brand and is not available to purchase from any other manufacturer.

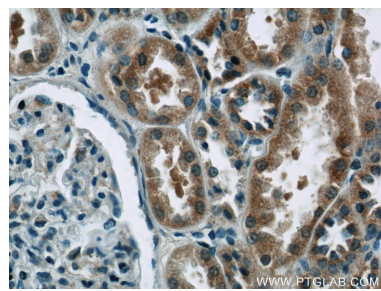
Selected Validation Data



L02 cells were subjected to SDS PAGE followed by western blot with 15887-1-AP (EIF1B antibody) at dilution of 1:300 incubated at room temperature for 1.5 hours.



Immunohistochemical analysis of paraffin-embedded human kidney tissue slide using 15887-1-AP (EIF1B Antibody) at dilution of 1:50 (under 10x lens).



Immunohistochemical analysis of paraffin-embedded human kidney tissue slide using 15887-1-AP (EIF1B Antibody) at dilution of 1:50 (under 40x lens).