

For Research Use Only

# MRPS2 Polyclonal antibody

Catalog Number: 15907-1-AP



## Basic Information

### Catalog Number:

15907-1-AP

### Size:

150ul , Concentration: 550 ug/ml by Nanodrop and 287 ug/ml by Bradford method using BSA as the standard;

### Source:

Rabbit

### Isotype:

IgG

### Immunogen Catalog Number:

AG8513

### GenBank Accession Number:

BC008017

### GeneID (NCBI):

51116

### UNIPROT ID:

Q9Y399

### Full Name:

mitochondrial ribosomal protein S2

### Calculated MW:

296 aa, 33 kDa

### Observed MW:

33 kDa

### Purification Method:

Antigen affinity purification

### Recommended Dilutions:

WB 1:1000-1:6000

IHC 1:20-1:200

## Applications

### Tested Applications:

WB, IHC, ELISA

### Species Specificity:

human, mouse, rat

**Note-IHC: suggested antigen retrieval with TE buffer pH 9.0; (\*) Alternatively, antigen retrieval may be performed with citrate buffer pH 6.0**

### Positive Controls:

WB : mouse brain tissue,

IHC : human stomach tissue,

## Storage

### Storage:

Store at -20°C. Stable for one year after shipment.

### Storage Buffer:

PBS with 0.02% sodium azide and 50% glycerol pH 7.3.

Aliquoting is unnecessary for -20°C storage

\*\*\* 20ul sizes contain 0.1% BSA

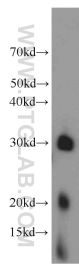
For technical support and original validation data for this product please contact:

T: 1 (888) 4PTGLAB (1-888-478-4522) (toll free in USA), or 1(312) 455-8498 (outside USA)

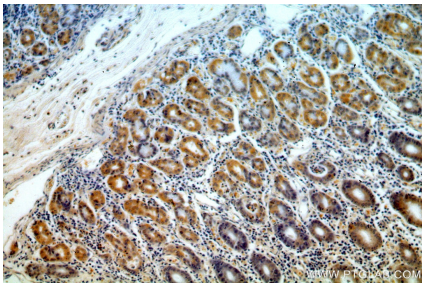
E: [proteintech@ptglab.com](mailto:proteintech@ptglab.com)  
W: [ptglab.com](http://ptglab.com)

This product is exclusively available under Proteintech Group brand and is not available to purchase from any other manufacturer.

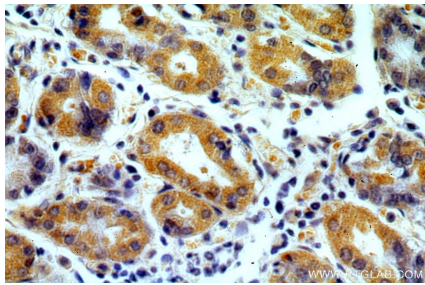
Selected Validation Data



mouse brain tissue were subjected to SDS PAGE followed by western blot with 15907-1-AP (MRPS2 antibody) at dilution of 1:3000 incubated at room temperature for 1.5 hours.



Immunohistochemical analysis of paraffin-embedded human stomach using 15907-1-AP (MRPS2 antibody) at dilution of 1:100 (under 10x lens).



Immunohistochemical analysis of paraffin-embedded human stomach using 15907-1-AP (MRPS2 antibody) at dilution of 1:100 (under 40x lens).