

For Research Use Only

POLR1C Polyclonal antibody

Catalog Number: 15923-1-AP

1 Publications



Basic Information

Catalog Number:

15923-1-AP

Size:

150ul, Concentration: 700 ug/ml by Nanodrop;

Source:

Rabbit

Isotype:

IgG

Immunogen Catalog Number:

AG8746

GenBank Accession Number:

BC008863

GeneID (NCBI):

9533

UNIPROT ID:

O15160

Full Name:

polymerase (RNA) I polypeptide C, 30kDa

Calculated MW:

346 aa, 39 kDa

Observed MW:

39 kDa

Purification Method:

Antigen affinity purification

Recommended Dilutions:

WB 1:500-1:2000

IP 0.5-4.0 ug for 1.0-3.0 mg of total protein lysate

IHC 1:20-1:200

Applications

Tested Applications:

WB, IP, IHC, ELISA

Species Specificity:

human, mouse

Cited Species:

mouse

Note-IHC: suggested antigen retrieval with TE buffer pH 9.0; (*) Alternatively, antigen retrieval may be performed with citrate buffer pH 6.0

Positive Controls:

WB: BxPC-3 cells, HEK-293 cells, Caco-2 cells, HeLa cells, HepG2 cells

IP: NIH/3T3 cells,

IHC: human ovary tissue, mouse liver tissue, human heart tissue, human kidney tissue, human placenta tissue, human testis tissue, human skin tissue, human liver tissue, human spleen tissue

Background Information

POLR1C is a DNA-dependent RNA polymerase which catalyzes the transcription of DNA into RNA using the four ribonucleoside triphosphates as substrates. It is a common component of RNA polymerases I and III which synthesize ribosomal RNA precursors and small RNAs, such as 5S rRNA and tRNAs, respectively. RPAC1 is part of the Pol core element with the central large cleft and probably a clamp element that moves to open and close the cleft (By similarity).

Notable Publications

Author	Pubmed ID	Journal	Application
Yongpeng Jiang	36443871	Genome Biol	

Storage

Storage:

Store at -20°C. Stable for one year after shipment.

Storage Buffer:

PBS with 0.02% sodium azide and 50% glycerol pH 7.3.

Aliquoting is unnecessary for -20°C storage

*** 20ul sizes contain 0.1% BSA

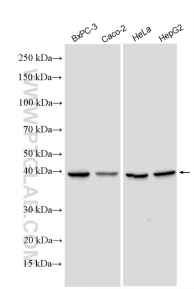
For technical support and original validation data for this product please contact:

T: 1 (888) 4PTGLAB (1-888-478-4522) (toll free in USA), or 1(312) 455-8498 (outside USA)

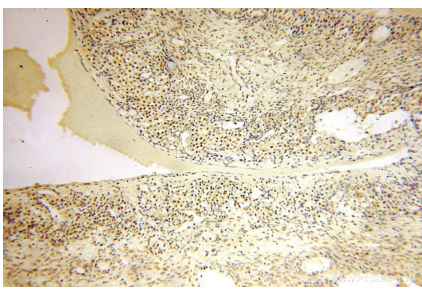
E: proteintech@ptglab.com
W: ptglab.com

This product is exclusively available under Proteintech Group brand and is not available to purchase from any other manufacturer.

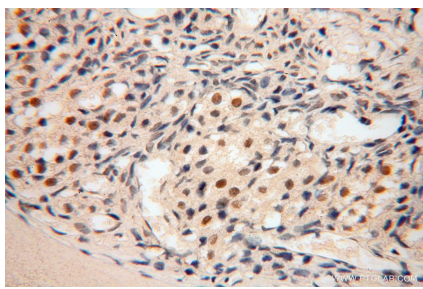
Selected Validation Data



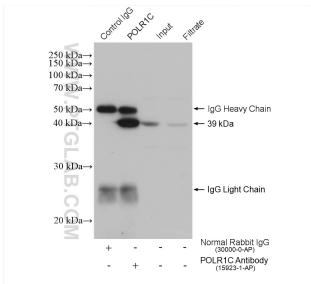
Various lysates were subjected to SDS PAGE followed by western blot with 15923-1-AP (POLR1C antibody) at dilution of 1:1000 incubated at room temperature for 1.5 hours.



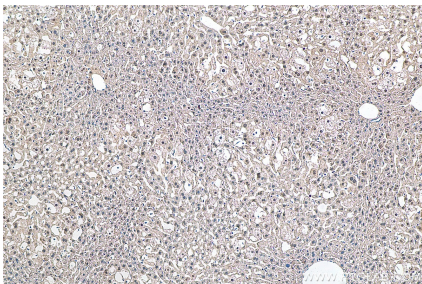
Immunohistochemical analysis of paraffin-embedded human ovary using 15923-1-AP (POLR1C antibody) at dilution of 1:200 (under 10x lens).



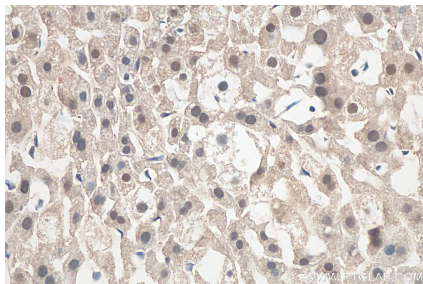
Immunohistochemical analysis of paraffin-embedded human ovary using 15923-1-AP (POLR1C antibody) at dilution of 1:200 (under 40x lens).



IP result of anti-POLR1C (IP:15923-1-AP, 4ug; Detection:15923-1-AP 1:800) with NIH/3T3 cells lysate 1600 ug.



Immunohistochemical analysis of paraffin-embedded mouse liver tissue slide using 15923-1-AP (POLR1C antibody) at dilution of 1:800 (under 10x lens). Heat mediated antigen retrieval with Tris-EDTA buffer (pH 9.0).



Immunohistochemical analysis of paraffin-embedded mouse liver tissue slide using 15923-1-AP (POLR1C antibody) at dilution of 1:800 (under 40x lens). Heat mediated antigen retrieval with Tris-EDTA buffer (pH 9.0).