

For Research Use Only

# PSMB10 Polyclonal antibody

Catalog Number: 15976-1-AP **3 Publications**



## Basic Information

<b>Catalog Number:</b> 15976-1-AP	<b>GenBank Accession Number:</b> BC017198	<b>Purification Method:</b> Antigen affinity purification
<b>Size:</b> 150ul , Concentration: 500 µg/ml by Nanodrop;	<b>GeneID (NCBI):</b> 5699	<b>Recommended Dilutions:</b> WB 1:500-1:2000 IHC 1:50-1:500
<b>Source:</b> Rabbit	<b>Full Name:</b> proteasome (prosome, macropain) subunit, beta type, 10	
<b>Isotype:</b> IgG	<b>Calculated MW:</b> 273 aa, 29 kDa	
<b>Immunogen Catalog Number:</b> AG8764	<b>Observed MW:</b> 29 kDa	

## Applications

<b>Tested Applications:</b> IHC, WB, ELISA	<b>Positive Controls:</b> WB : Raji cells, human liver tissue IHC : human liver cancer tissue,
<b>Cited Applications:</b> WB	
<b>Species Specificity:</b> human	

**Note-IHC: suggested antigen retrieval with TE buffer pH 9.0; (\*) Alternatively, antigen retrieval may be performed with citrate buffer pH 6.0**

## Background Information

The proteasome subunit, beta type 10 (PSMB10) gene regulated by interferon-gamma is a core part of the 26S proteasome complex, which is an important protein degrading system. Study identifies immunosubunit PSMB10 as a novel regulator that contributes to Ang II-induced atrial fibrillation (AF) and suggests that inhibition of PSMB10 may represent a potential therapeutic target for treating hypertensive AF. (PMID: 29507100, PMID: 16965406)

## Notable Publications

Author	Pubmed ID	Journal	Application
Xin Xie	35710020	Biochem Pharmacol	WB
Xin Xie	32595507	Front Pharmacol	WB
Han Gao	36580191	Metab Brain Dis	WB

## Storage

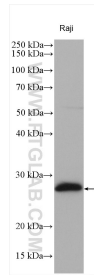
**Storage:**  
Store at -20°C. Stable for one year after shipment.  
**Storage Buffer:**  
PBS with 0.02% sodium azide and 50% glycerol pH 7.3.  
Aliquoting is unnecessary for -20°C storage

\*\*\* 20ul sizes contain 0.1% BSA

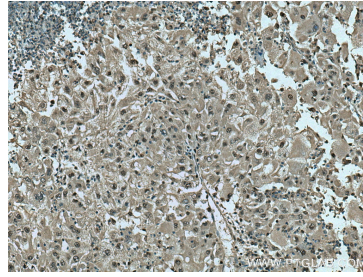
For technical support and original validation data for this product please contact:  
T: 1 (888) 4PTGLAB (1-888-478-4522) (toll free in USA), or 1(312) 455-8498 (outside USA)  
E: proteintech@ptglab.com  
W: ptglab.com

This product is exclusively available under Proteintech Group brand and is not available to purchase from any other manufacturer.

## Selected Validation Data



Raji cells were subjected to SDS PAGE followed by western blot with 15976-1-AP (PSMB10 antibody) at dilution of 1:1000 incubated at room temperature for 1.5 hours.



Immunohistochemical analysis of paraffin-embedded human liver cancer tissue slide using 15976-1-AP (PSMB10 antibody) at dilution of 1:200 (under 10x lens). Heat mediated antigen retrieval with Tris-EDTA buffer (pH 9.0).