

For Research Use Only

MRPS26 Polyclonal antibody

Catalog Number: 15989-1-AP

3 Publications



Basic Information

Catalog Number:

15989-1-AP

Size:

150ul, Concentration: 200 ug/ml by Nanodrop and 153 ug/ml by Bradford method using BSA as the standard;

Source:

Rabbit

Isotype:

IgG

Immunogen Catalog Number:

AG8797

GenBank Accession Number:

BC013018

GeneID (NCBI):

64949

UNIPROT ID:

Q9BYN8

Full Name:

mitochondrial ribosomal protein S26

Calculated MW:

205 aa, 24 kDa

Observed MW:

24 kDa

Purification Method:

Antigen affinity purification

Recommended Dilutions:

WB 1:500-1:2000

IP 0.5-4.0 ug for 1.0-3.0 mg of total protein lysate

IHC 1:20-1:200

Applications

Tested Applications:

WB, IP, IHC, ELISA

Cited Applications:

WB

Species Specificity:

human, mouse, rat

Cited Species:

human, mouse

Note-IHC: suggested antigen retrieval with TE buffer pH 9.0; (*) Alternatively, antigen retrieval may be performed with citrate buffer pH 6.0

Positive Controls:

WB : HepG2 cells, HeLa cells, mouse brain tissue

IP : HepG2 cells,

IHC : human skin cancer tissue, human liver cancer tissue

Notable Publications

Author	Pubmed ID	Journal	Application
Uwe Richter	30683687	Life Sci Alliance	WB
Taru Hilander	39015150	iScience	WB
Elina Järvinen	37860849	Clin Exp Immunol	WB

Storage

Storage:

Store at -20°C. Stable for one year after shipment.

Storage Buffer:

PBS with 0.02% sodium azide and 50% glycerol pH 7.3.

Aliquoting is unnecessary for -20°C storage

*** 20ul sizes contain 0.1% BSA

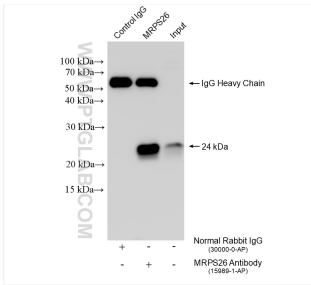
For technical support and original validation data for this product please contact:

T: 1 (888) 4PTGLAB (1-888-478-4522) (toll free in USA), or 1(312) 455-8498 (outside USA)

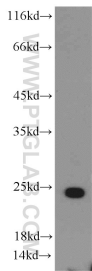
E: proteintech@ptglab.com
W: ptglab.com

This product is exclusively available under Proteintech Group brand and is not available to purchase from any other manufacturer.

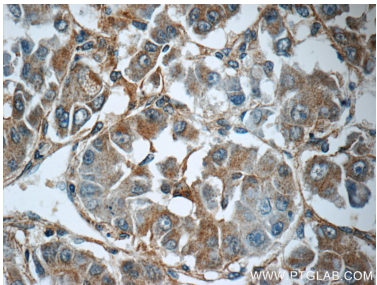
Selected Validation Data



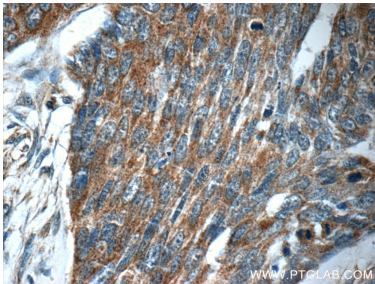
IP result of anti-MRPS26 (IP:15989-1-AP, 4ug; Detection:15989-1-AP 1:1000) with HepG2 cells lysate 1085 ug.



HepG2 cells were subjected to SDS PAGE followed by western blot with 15989-1-AP (MRPS26 antibody) at dilution of 1:500 incubated at room temperature for 1.5 hours.



Immunohistochemical analysis of paraffin-embedded human liver cancer tissue slide using 15989-1-AP (MRPS26 Antibody) at dilution of 1:50 (under 40x lens).



Immunohistochemical analysis of paraffin-embedded human skin cancer tissue slide using 15989-1-AP (MRPS26 Antibody) at dilution of 1:50 (under 40x lens).