

For Research Use Only

# LAS1L Polyclonal antibody

Catalog Number: 16010-1-AP

4 Publications



## Basic Information

### Catalog Number:

16010-1-AP

### Size:

150ul, Concentration: 400 ug/ml by Nanodrop;

### Source:

Rabbit

### Isotype:

IgG

### Immunogen Catalog Number:

AG8732

### GenBank Accession Number:

BC014545

### GeneID (NCBI):

81887

### UNIPROT ID:

Q9Y4W2

### Full Name:

LAS1-like (S. cerevisiae)

### Calculated MW:

734 aa, 83 kDa

### Observed MW:

83 kDa, 70-75 kDa

### Purification Method:

Antigen affinity purification

### Recommended Dilutions:

WB 1:500-1:3000

IP 0.5-4.0 ug for 1.0-3.0 mg of total protein lysate

IHC 1:50-1:500

IF/ICC 1:20-1:200

## Applications

### Tested Applications:

WB, IHC, IF/ICC, IP, ELISA

### Cited Applications:

WB

### Species Specificity:

human, mouse, rat

### Cited Species:

human

**Note-IHC: suggested antigen retrieval with TE buffer pH 9.0; (\*) Alternatively, antigen retrieval may be performed with citrate buffer pH 6.0**

### Positive Controls:

WB : COLO 320 cells, HEK-293 cells, HeLa cells, HepG2 cells, PC-3 cells

IP : HEK-293 cells,

IHC : human ovary cancer tissue,

IF/ICC : HepG2 cells,

## Background Information

LAS1L is a nucleolar protein required for the synthesis of the 60S ribosomal subunit and maturation of the 28S rRNA. LAS1L interacts with PELP1, TEX10, and WDR18, along with NOL9 and SENP3, to form a novel nucleolar complex that cofractionates with the 60S preribosomal subunit.

## Notable Publications

Author	Pubmed ID	Journal	Application
Khaled Mohamed Nassar	39258975	Cancer Res Commun	WB
Xue Yang	37853941	Mol Oncol	WB
Kristin A Altwegg	37199805	Breast Cancer Res Treat	WB

## Storage

### Storage:

Store at -20°C. Stable for one year after shipment.

### Storage Buffer:

PBS with 0.02% sodium azide and 50% glycerol pH 7.3.

Aliquoting is unnecessary for -20°C storage

\*\*\* 20ul sizes contain 0.1% BSA

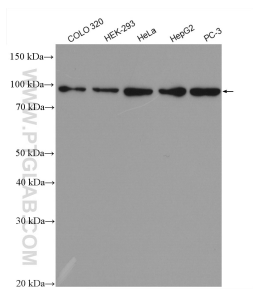
For technical support and original validation data for this product please contact:

T: 1 (888) 4PTGLAB (1-888-478-4522) (toll free in USA), or 1(312) 455-8498 (outside USA)

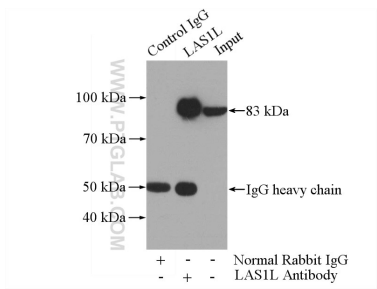
E: [proteintech@ptglab.com](mailto:proteintech@ptglab.com)  
W: [ptglab.com](http://ptglab.com)

This product is exclusively available under Proteintech Group brand and is not available to purchase from any other manufacturer.

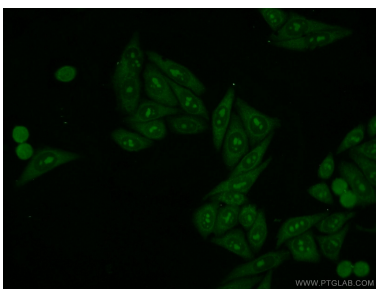
## Selected Validation Data



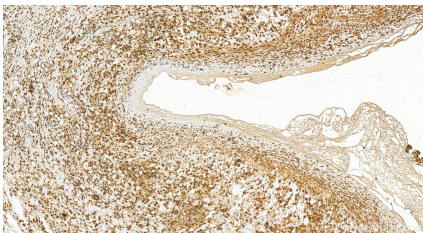
Various lysates were subjected to SDS PAGE followed by western blot with 16010-1-AP (LAS1L antibody) at dilution of 1:1500 incubated at room temperature for 1.5 hours.



IP result of anti-LAS1L (IP:16010-1-AP, 4ug; Detection:16010-1-AP 1:1000) with HEK-293 cells lysate 1200ug.



Immunofluorescent analysis of HepG2 cells using 16010-1-AP (LAS1L antibody) at dilution of 1:50 and Alexa Fluor 488-conjugated AffiniPure Goat Anti-Rabbit IgG(H+L).



Immunohistochemical analysis of paraffin-embedded human ovary cancer tissue slide using 16010-1-AP (LAS1L antibody) at dilution of 1:200 (under 20x lens). Heat mediated antigen retrieval with Tris-EDTA buffer (pH 9.0).