

For Research Use Only

# NAP1L4 Polyclonal antibody

Catalog Number: 16018-1-AP

Featured Product

6 Publications



## Basic Information

<b>Catalog Number:</b> 16018-1-AP	<b>GenBank Accession Number:</b> BC022090	<b>Purification Method:</b> Antigen affinity purification
<b>Size:</b> 150ul, Concentration: 600 µg/ml by Nanodrop and 280 µg/ml by Bradford method using BSA as the standard;	<b>GeneID (NCBI):</b> 4676	<b>Recommended Dilutions:</b> WB 1:1000-1:4000 IP 0.5-4.0 ug for IP and 1:500-1:2000 for WB
<b>Source:</b> Rabbit	<b>Full Name:</b> nucleosome assembly protein 1-like 4	<b>IHC 1:20-1:200</b>
<b>Isotype:</b> IgG	<b>Calculated MW:</b> 375 aa, 43 kDa	
<b>Immunogen Catalog Number:</b> AG8827	<b>Observed MW:</b> 52 kDa	

## Applications

<b>Tested Applications:</b> IHC, IP, WB, ELISA	<b>Positive Controls:</b> WB: HeLa cells, mouse liver tissue, mouse testis tissue, HEK-293 cells, A431 cells
<b>Cited Applications:</b> IF, IHC, WB	<b>IP:</b> HeLa cells,
<b>Species Specificity:</b> human, mouse, rat	<b>IHC:</b> human liver tissue,
<b>Cited Species:</b> human, mouse	

**Note-IHC: suggested antigen retrieval with TE buffer pH 9.0; (\*) Alternatively, antigen retrieval may be performed with citrate buffer pH 6.0**

## Background Information

### Notable Publications

Author	Pubmed ID	Journal	Application
Chen Chen	34499080	J Cell Biol	WB
Hélène Meistermann	25044019	Mol Cell Proteomics	WB
Francisco Dominguez	34076483	J Virol	IF, WB

## Storage

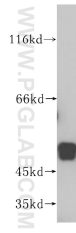
**Storage:**  
Store at -20°C. Stable for one year after shipment.  
**Storage Buffer:**  
PBS with 0.02% sodium azide and 50% glycerol pH 7.3.  
Aliquoting is unnecessary for -20°C storage

\*\*\* 20ul sizes contain 0.1% BSA

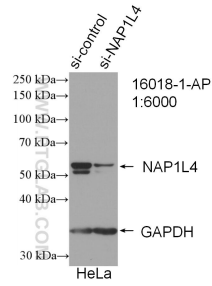
For technical support and original validation data for this product please contact:  
T: 1 (888) 4PTGLAB (1-888-478-4522) (toll free in USA), or 1(312) 455-8498 (outside USA)  
E: proteintech@ptglab.com  
W: ptglab.com

This product is exclusively available under Proteintech Group brand and is not available to purchase from any other manufacturer.

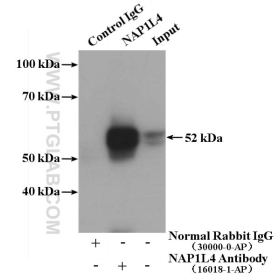
## Selected Validation Data



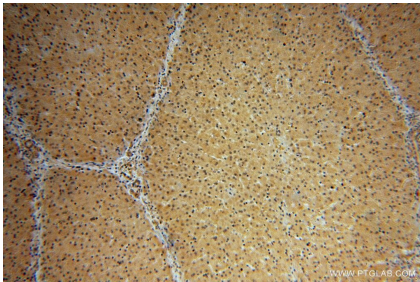
HeLa cells were subjected to SDS PAGE followed by western blot with 16018-1-AP (NAP1L4 antibody) at dilution of 1:1000 incubated at room temperature for 1.5 hours.



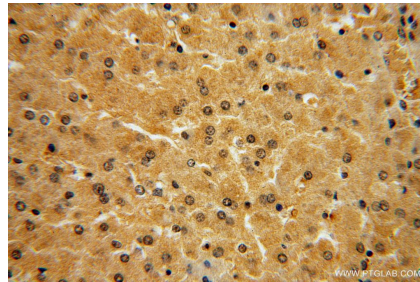
WB result of NAP1L4 antibody (16018-1-AP; 1:6000; incubated at room temperature for 1.5 hours) with sh-Control and sh-NAP1L4 transfected HeLa cells.



IP Result of anti-NAP1L4 (IP:16018-1-AP, 4ug; Detection:16018-1-AP 1:1000) with HeLa cells lysate 4000ug.



Immunohistochemical analysis of paraffin-embedded human liver using 16018-1-AP (NAP1L4 antibody) at dilution of 1:100 (under 10x lens).



Immunohistochemical analysis of paraffin-embedded human liver using 16018-1-AP (NAP1L4 antibody) at dilution of 1:100 (under 40x lens).