

For Research Use Only

# MANBAL Polyclonal antibody

Catalog Number: 16028-1-AP



## Basic Information

<b>Catalog Number:</b> 16028-1-AP	<b>GenBank Accession Number:</b> BC014672	<b>Purification Method:</b> Antigen affinity purification
<b>Size:</b> 150ul , Concentration: 450 µg/ml by Nanodrop and 280 µg/ml by Bradford method using BSA as the standard;	<b>GeneID (NCBI):</b> 63905	<b>Recommended Dilutions:</b> IHC 1:20-1:200
<b>Source:</b> Rabbit	<b>Full Name:</b> mannosidase, beta A, lysosomal-like	
<b>Isotype:</b> IgG	<b>Calculated MW:</b> 85 aa, 10 kDa	
<b>Immunogen Catalog Number:</b> AG8888		

## Applications

<b>Tested Applications:</b> IHC, ELISA	<b>Positive Controls:</b> IHC : human brain tissue,
<b>Species Specificity:</b> human, mouse, rat	
<b>Note-IHC: suggested antigen retrieval with TE buffer pH 9.0; (*) Alternatively, antigen retrieval may be performed with citrate buffer pH 6.0</b>	

## Background Information

### Storage

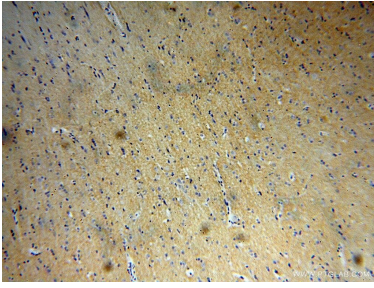
**Storage:**  
Store at -20°C. Stable for one year after shipment.  
**Storage Buffer:**  
PBS with 0.02% sodium azide and 50% glycerol pH 7.3.  
Aliquoting is unnecessary for -20°C storage

\*\*\* 20ul sizes contain 0.1% BSA

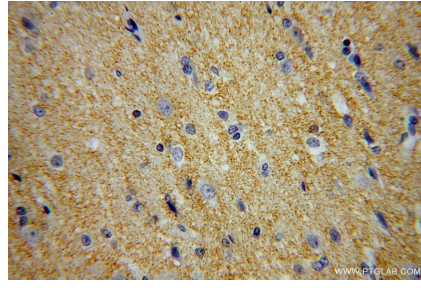
For technical support and original validation data for this product please contact:  
T: 1 (888) 4PTGLAB (1-888-478-4522) (toll free in USA), or 1(312) 455-8498 (outside USA)  
E: proteintech@ptglab.com  
W: ptglab.com

This product is exclusively available under Proteintech Group brand and is not available to purchase from any other manufacturer.

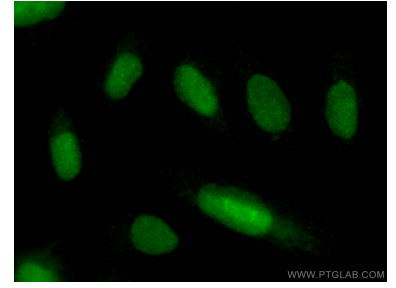
## Selected Validation Data



Immunohistochemical analysis of paraffin-embedded human brain using 16028-1-AP (MANBAL antibody) at dilution of 1:100 (under 10x lens).



Immunohistochemical analysis of paraffin-embedded human brain using 16028-1-AP (MANBAL antibody) at dilution of 1:100 (under 40x lens).



Immunofluorescent analysis of (4% PFA) fixed U2OS cells using MANBAL antibody (16028-1-AP) at dilution of 1:200 and CoraLite®488-Conjugated AffiniPure Goat Anti-Rabbit IgG(H+L).