

For Research Use Only

SERPINB2 Polyclonal antibody

Catalog Number: 16035-1-AP **4 Publications**



Basic Information

Catalog Number: 16035-1-AP	GenBank Accession Number: BC012609	Purification Method: Antigen affinity purification
Size: 150ul , Concentration: 400 µg/ml by Nanodrop;	GeneID (NCBI): 5055	Recommended Dilutions: WB 1:500-1:1000 IP 0.5-4.0 ug for IP and 1:200-1:1000 for WB
Source: Rabbit	Full Name: serpin peptidase inhibitor, clade B (ovalbumin), member 2	
Isotype: IgG	Calculated MW: 415 aa, 47 kDa	
Immunogen Catalog Number: AG8906	Observed MW: 45-47 kDa	

Applications

Tested Applications: IP, WB, ELISA	Positive Controls: WB : A431 cells, Jurkat cells IP : Jurkat cells,
Cited Applications: IHC, WB	
Species Specificity: human	
Cited Species: human	

Background Information

Notable Publications

Author	Pubmed ID	Journal	Application
Chunling Liu	26338969	Oncotarget	WB, IHC
Chia-Yi Su	26230665	PLoS One	IHC
Dan Zhang	30031066	J Proteomics	WB

Storage

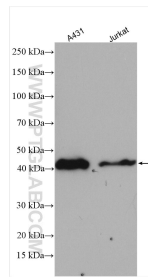
Storage:
Store at -20°C. Stable for one year after shipment.
Storage Buffer:
PBS with 0.02% sodium azide and 50% glycerol pH 7.3.
Aliquoting is unnecessary for -20°C storage

***** 20ul sizes contain 0.1% BSA**

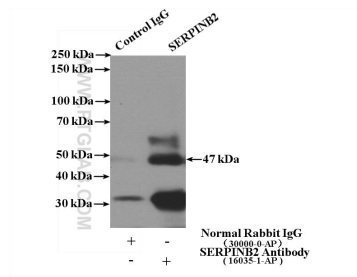
For technical support and original validation data for this product please contact:
T: 1 (888) 4PTGLAB (1-888-478-4522) (toll free in USA), or 1(312) 455-8498 (outside USA)
E: proteintech@ptglab.com
W: ptglab.com

This product is exclusively available under Proteintech Group brand and is not available to purchase from any other manufacturer.

Selected Validation Data



Various lysates were subjected to SDS PAGE followed by western blot with 16035-1-AP (SERPINB2 antibody) at dilution of 1:800 incubated at room temperature for 1.5 hours.



IP Result of anti-SERPINB2 (IP:16035-1-AP, 4ug; Detection:16035-1-AP 1:300) with Jurkat cells lysate 3600ug.