

For Research Use Only

NDUFB6 Polyclonal antibody

Catalog Number: 16037-1-AP

Featured Product

12 Publications



Basic Information

Catalog Number:

16037-1-AP

Size:

150ul, Concentration: 180 ug/ml by Nanodrop and 133 ug/ml by Bradford method using BSA as the standard;

Source:

Rabbit

Isotype:

IgG

Immunogen Catalog Number:

AG8908

GenBank Accession Number:

BC009801

GeneID (NCBI):

4712

UNIPROT ID:

O95139

Full Name:

NADH dehydrogenase (ubiquinone) 1 beta subcomplex, 6, 17kDa

Calculated MW:

128 aa, 15 kDa

Observed MW:

16-20 kDa

Purification Method:

Antigen affinity purification

Recommended Dilutions:

WB 1:1000-1:4000

IHC 1:50-1:500

Applications

Tested Applications:

WB, IHC, ELISA

Cited Applications:

WB, IHC

Species Specificity:

human, mouse, rat

Cited Species:

human, mouse

Note-IHC: suggested antigen retrieval with TE buffer pH 9.0; (*) Alternatively, antigen retrieval may be performed with citrate buffer pH 6.0

Positive Controls:

WB : A549 cells, LNCaP cells, MCF-7 cells, mouse skeletal muscle tissue, rat skeletal muscle tissue

IHC : human liver cancer tissue,

Background Information

NDUFB6, also named as NADH dehydrogenase [ubiquinone] 1 beta subcomplex subunit 6 or Complex I-B17, is a 128 amino acid protein, which belongs to the complex I NDUFB6 subunit family. NDUFB6 localizes in the Mitochondrion inner membrane and is an accessory subunit of the mitochondrial membrane respiratory chain NADH dehydrogenase (Complex I), that is believed not to be involved in catalysis. Complex I functions in the transfer of electrons from NADH to the respiratory chain. The immediate electron acceptor for the enzyme is believed to be ubiquinone.

Notable Publications

Author	Pubmed ID	Journal	Application
Lei Wu	33129969	J Nutr Biochem	WB
Siddhesh Aras	25315652	Mitochondrion	WB
Zhuojun Zhang	32546794	Nat Commun	WB, IHC

Storage

Storage:

Store at -20°C. Stable for one year after shipment.

Storage Buffer:

PBS with 0.02% sodium azide and 50% glycerol, pH7.3

Aliquoting is unnecessary for -20°C storage

*** 20ul sizes contain 0.1% BSA

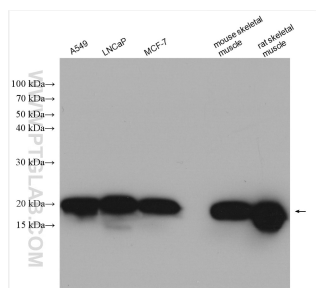
For technical support and original validation data for this product please contact:

T: 1 (888) 4PTGLAB (1-888-478-4522) (toll free in USA), or 1(312) 455-8498 (outside USA)

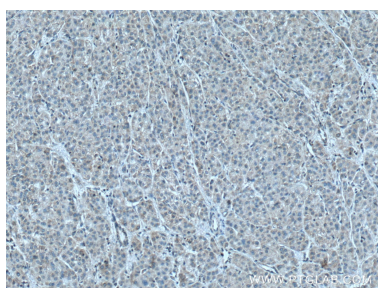
E: proteintech@ptglab.com
W: ptglab.com

This product is exclusively available under Proteintech Group brand and is not available to purchase from any other manufacturer.

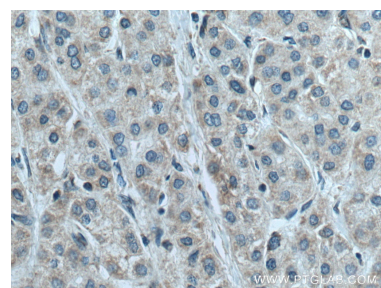
Selected Validation Data



Various lysates were subjected to SDS PAGE followed by western blot with 16037-1-AP (NDUFB6 antibody) at dilution of 1:2000 incubated at room temperature for 1.5 hours.



Immunohistochemical analysis of paraffin-embedded human liver cancer tissue slide using 16037-1-AP (NDUFB6 antibody) at dilution of 1:200 (under 10x lens. Heat mediated antigen retrieval with Tris-EDTA buffer (pH 9.0).



Immunohistochemical analysis of paraffin-embedded human liver cancer tissue slide using 16037-1-AP (NDUFB6 antibody) at dilution of 1:200 (under 40x lens. Heat mediated antigen retrieval with Tris-EDTA buffer (pH 9.0).