

For Research Use Only

LYPLA1 Polyclonal antibody

Catalog Number: 16055-1-AP

9 Publications



Basic Information

Catalog Number:

16055-1-AP

Size:

150ul, Concentration: 400 ug/ml by Nanodrop and 300 ug/ml by Bradford method using BSA as the standard;

Source:

Rabbit

Isotype:

IgG

Immunogen Catalog Number:

AG9022

GenBank Accession Number:

BC010397

GeneID (NCBI):

10434

UNIPROT ID:

O75608

Full Name:

lysophospholipase I

Calculated MW:

230 aa, 25 kDa

Observed MW:

25 kDa

Purification Method:

Antigen affinity purification

Recommended Dilutions:

WB 1:1000-1:4000

IP 0.5-4.0 ug for 1.0-3.0 mg of total protein lysate

IHC 1:50-1:500

IF/ICC 1:50-1:500

Applications

Tested Applications:

WB, IHC, IF/ICC, IP, ELISA

Cited Applications:

WB, IHC

Species Specificity:

human, mouse, rat

Cited Species:

human, mouse

Positive Controls:

WB : HeLa cells, mouse brain tissue, human brain tissue, human liver tissue, rat liver tissue, rat brain tissue

IP : mouse brain tissue,

IHC : mouse brain tissue,

IF/ICC : HeLa cells,

Note-IHC: suggested antigen retrieval with TE buffer pH 9.0; (*) Alternatively, antigen retrieval may be performed with citrate buffer pH 6.0

Background Information

LYPLA1(Lysophospholipase 1) is also named as APT1(Acyl-protein thioesterase 1), LPL1 and belongs to the AB hydrolase 2 family. It is an important enzyme responsible for depalmitoylation of palmitoyl proteins and works as a thioesterase that cleaves the S-palmitoyl group of H-Ras, heterotrimeric G protein alpha subunit (Ga), regulator of G protein signaling 4 (RGS4) and the endothelial isoform of nitric oxide synthase (eNOS) in vitro(PMID:19439193).

Notable Publications

Author	Pubmed ID	Journal	Application
Liwei Yang	34624536	Ecotoxicol Environ Saf	WB
Kumiko Koyama	24682756	Drug Metab Dispos	IHC
Megan Garland	29364904	PLoS One	WB

Storage

Storage:

Store at -20°C. Stable for one year after shipment.

Storage Buffer:

PBS with 0.02% sodium azide and 50% glycerol pH 7.3.

Aliquoting is unnecessary for -20°C storage

*** 20ul sizes contain 0.1% BSA

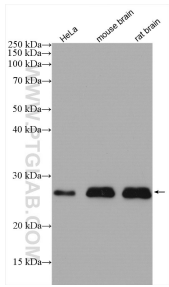
For technical support and original validation data for this product please contact:

T: 1 (888) 4PTGLAB (1-888-478-4522) (toll free in USA), or 1(312) 455-8498 (outside USA)

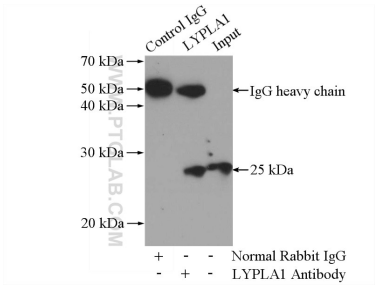
E: proteintech@ptglab.com
W: ptglab.com

This product is exclusively available under Proteintech Group brand and is not available to purchase from any other manufacturer.

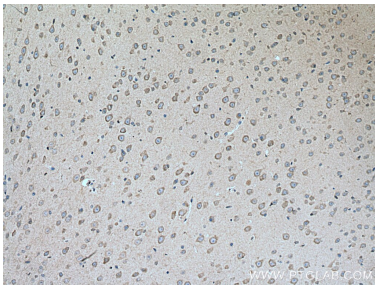
Selected Validation Data



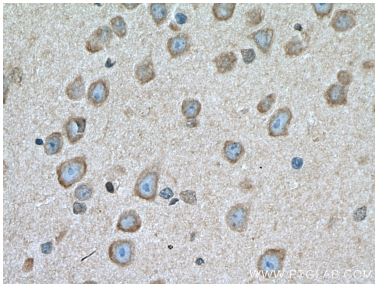
Various lysates were subjected to SDS PAGE followed by western blot with 16055-1-AP (LYPLA1 antibody) at dilution of 1:2500 incubated at room temperature for 1.5 hours.



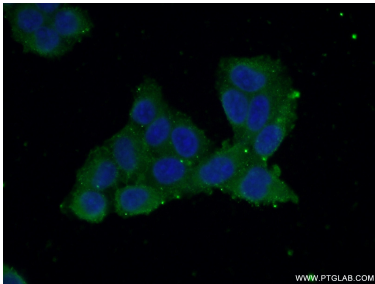
IP result of anti-LYPLA1 (IP:16055-1-AP, 4ug; Detection:16055-1-AP 1:500) with mouse brain tissue lysate 4000ug.



Immunohistochemical analysis of paraffin-embedded mouse brain tissue slide using 16055-1-AP (LYPLA1 antibody) at dilution of 1:200 (under 10x lens). Heat mediated antigen retrieval with Tris-EDTA buffer (pH 9.0).



Immunohistochemical analysis of paraffin-embedded mouse brain tissue slide using 16055-1-AP (LYPLA1 antibody) at dilution of 1:200 (under 40x lens). Heat mediated antigen retrieval with Tris-EDTA buffer (pH 9.0).



Immunofluorescent analysis of (-20°C Ethanol) fixed HeLa cells using 16055-1-AP (LYPLA1 antibody) at dilution of 1:50 and Alexa Fluor 488-conjugated Goat Anti-Rabbit IgG(H+L).