

For Research Use Only

PMPCB Polyclonal antibody

Catalog Number: 16064-1-AP

Featured Product

22 Publications



Basic Information

Catalog Number:

16064-1-AP

Size:

150ul, Concentration: 500 ug/ml by Nanodrop and 300 ug/ml by Bradford method using BSA as the standard;

Source:

Rabbit

Isotype:

IgG

Immunogen Catalog Number:

AG8937

GenBank Accession Number:

BC010398

GeneID (NCBI):

9512

UNIPROT ID:

O75439

Full Name:

peptidase (mitochondrial processing) beta

Calculated MW:

489 aa, 54 kDa

Observed MW:

43-52 kDa

Purification Method:

Antigen affinity purification

Recommended Dilutions:

WB 1:500-1:3000

IP 0.5-4.0 ug for 1.0-3.0 mg of total protein lysate

IHC 1:300-1:1200

IF/ICC 1:10-1:100

Applications

Tested Applications:

WB, IHC, IF/ICC, IP, ELISA

Cited Applications:

WB, IF, IHC

Species Specificity:

human, mouse, rat

Cited Species:

human, mouse

Note-IHC: suggested antigen retrieval with TE buffer pH 9.0; (*) Alternatively, antigen retrieval may be performed with citrate buffer pH 6.0

Positive Controls:

WB : MCF7 cells, HepG2 cells, human liver tissue, MCF-7 cells, rat liver tissue

IP : MCF-7 cells,

IHC : human lung cancer tissue,

IF/ICC : HepG2 cells,

Background Information

PMPCB(Mitochondrial-processing peptidase subunit beta) is also named as MPPB, P-52 and belongs to the peptidase M16 family. It cleaves presequences (transit peptides) from mitochondrial protein precursors. It is a mitochondrial matrix marker and Tom70, cytochrome c heme lyase (CCHL) are markers for outer membrane, intermembrane space(PMID:12574118).

Notable Publications

Author	Pubmed ID	Journal	Application
Olga Zurita Rendón	30061372	Mol Cell Biol	
Béatrice Durel	34463964	Biol Cell	IF
Giulia Bertolin	24149440	Autophagy	WB,IF

Storage

Storage:

Store at -20°C. Stable for one year after shipment.

Storage Buffer:

PBS with 0.02% sodium azide and 50% glycerol pH 7.3.

Aliquoting is unnecessary for -20°C storage

*** 20ul sizes contain 0.1% BSA

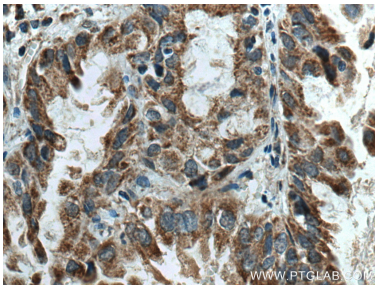
For technical support and original validation data for this product please contact:

T: 1 (888) 4PTGLAB (1-888-478-4522) (toll free in USA), or 1(312) 455-8498 (outside USA)

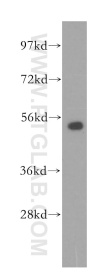
E: proteintech@ptglab.com
W: ptglab.com

This product is exclusively available under Proteintech Group brand and is not available to purchase from any other manufacturer.

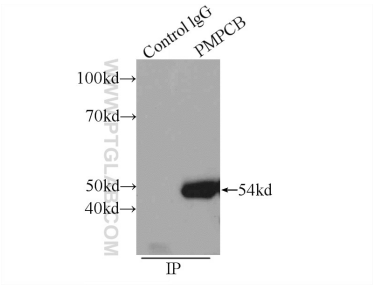
Selected Validation Data



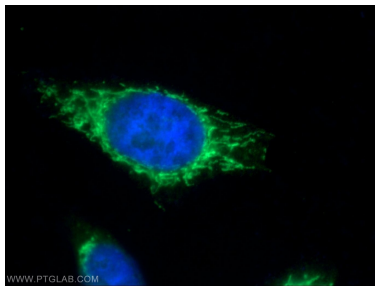
Immunohistochemical analysis of paraffin-embedded human lung cancer tissue slide using 16064-1-AP (PMPCB antibody) at dilution of 1:600 (under 40x lens). Heat mediated antigen retrieval with Tris-EDTA buffer (pH 9.0).



MCF7 cells were subjected to SDS PAGE followed by western blot with 16064-1-AP (PMPCB antibody) at dilution of 1:500 incubated at room temperature for 1.5 hours.



IP result of anti-PMPCB (IP:16064-1-AP, 3ug; Detection:16064-1-AP 1:500) with MCF-7 cells lysate 2560ug.



Immunofluorescent analysis of HepG2 cells using 16064-1-AP (PMPCB antibody) at dilution of 1:25 and Alexa Fluor 488-conjugated Goat Anti-Rabbit IgG(H+L).