

For Research Use Only

GCDFP-15/PIP Polyclonal antibody

Catalog Number: 16068-1-AP



Basic Information

Catalog Number:

16068-1-AP

Size:

150ul, Concentration: 400 ug/ml by Nanodrop and 333 ug/ml by Bradford method using BSA as the standard;

Source:

Rabbit

Isotype:

IgG

Immunogen Catalog Number:

AG9004

GenBank Accession Number:

BC010950

GeneID (NCBI):

5304

UNIPROT ID:

P12273

Full Name:

prolactin-induced protein

Calculated MW:

146 aa, 17 kDa

Purification Method:

Antigen affinity purification

Recommended Dilutions:

IHC 1:200-1:800

Applications

Tested Applications:

IHC, ELISA

Species Specificity:

human

Note-IHC: suggested antigen retrieval with TE buffer pH 9.0; (*) Alternatively, antigen retrieval may be performed with citrate buffer pH 6.0

Positive Controls:

IHC : human breast cancer tissue, human skin tissue, human breast tissue

Background Information

GCDFP-15 (gross cystic disease fluid protein 15), also known as PIP (prolactin-induced protein) is a secretory glycoprotein expressed in benign and malignant breast tumor tissues and in some normal exocrine organs such as sweat, salivary, and lacrimal glands (PMID: 12393800). GCDFP-15 expression is increased by prolactin and androgen and inhibited by estrogen (PMID: 18854942). The expression is also regulated by interleukins. GCDFP-15 is a marker of apocrine differentiation and is frequently used for assessment of metastases or regional recurrences of breast origin.

Storage

Storage:

Store at -20°C. Stable for one year after shipment.

Storage Buffer:

PBS with 0.02% sodium azide and 50% glycerol pH 7.3.

Aliquoting is unnecessary for -20°C storage

*** 20ul sizes contain 0.1% BSA

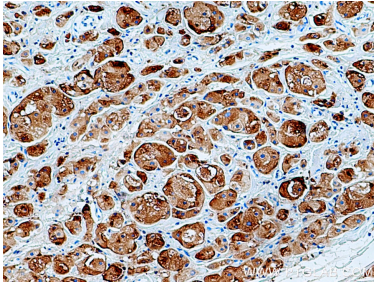
For technical support and original validation data for this product please contact:

T: 1 (888) 4PTGLAB (1-888-478-4522) (toll free in USA), or 1(312) 455-8498 (outside USA)

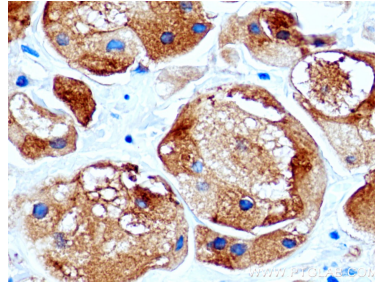
E: proteintech@ptglab.com
W: ptglab.com

This product is exclusively available under Proteintech Group brand and is not available to purchase from any other manufacturer.

Selected Validation Data



Immunohistochemical analysis of paraffin-embedded human breast cancer tissue slide using 16068-1-AP (GCDFP-15/PIP antibody) at dilution of 1:400 (under 10x lens). Heat mediated antigen retrieval with Tris-EDTA buffer (pH 9.0).



Immunohistochemical analysis of paraffin-embedded human breast cancer tissue slide using 16068-1-AP (GCDFP-15/PIP antibody) at dilution of 1:400 (under 40x lens). Heat mediated antigen retrieval with Tris-EDTA buffer (pH 9.0).