

For Research Use Only

EEF1A2 Polyclonal antibody

Catalog Number: 16091-1-AP

Featured Product

22 Publications



Basic Information

Catalog Number:

16091-1-AP

Size:

150ul, Concentration: 550 ug/ml by Nanodrop;

Source:

Rabbit

Isotype:

IgG

Immunogen Catalog Number:

AG6875

GenBank Accession Number:

BC000432

GeneID (NCBI):

1917

UNIPROT ID:

Q05639

Full Name:

eukaryotic translation elongation factor 1 alpha 2

Calculated MW:

50 kDa

Observed MW:

50-53 kDa

Purification Method:

Antigen affinity purification

Recommended Dilutions:

WB 1:2000-1:10000

IP 0.5-4.0 ug for 1.0-3.0 mg of total protein lysate

IHC 1:500-1:2000

Applications

Tested Applications:

WB, IHC, IP, ELISA

Cited Applications:

WB, IHC, IF, IP, RIP

Species Specificity:

human, mouse, rat

Cited Species:

human, mouse, rat, zebrafish, oyster

Note-IHC: suggested antigen retrieval with TE buffer pH 9.0; (*) Alternatively, antigen retrieval may be performed with citrate buffer pH 6.0

Positive Controls:

WB : HEK-293 cells, MCF-7 cells, mouse brain tissue, mouse heart tissue, mouse skeletal muscle tissue, rat brain tissue

IP : mouse brain tissue,

IHC : human colon,

Background Information

EEF1A2, also named as EEF1A1, STN and Statin-S1, belongs to the GTP-binding elongation factor family and EF-Tu/EF-1A subfamily. It promotes the GTP-dependent binding of aminoacyl-tRNA to the A-site of ribosomes during protein biosynthesis. EEF1A2 may be critical in the development of ovarian cancer. The MW of EEF1A2 is 50-53kd. This antibody can recognize both EEF1A1 and EEF1A2.

Notable Publications

Author	Pubmed ID	Journal	Application
Ying Hou	34500061	Pharmacol Res	WB
Xiaohong Huang	27880033	Proteomics	WB, IF
Faith C J Davies	32160274	Hum Mol Genet	WB

Storage

Storage:

Store at -20°C. Stable for one year after shipment.

Storage Buffer:

PBS with 0.02% sodium azide and 50% glycerol pH 7.3.

Aliquoting is unnecessary for -20°C storage

*** 20ul sizes contain 0.1% BSA

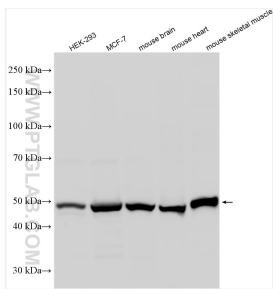
For technical support and original validation data for this product please contact:

T: 1 (888) 4PTGLAB (1-888-478-4522) (toll free in USA), or 1(312) 455-8498 (outside USA)

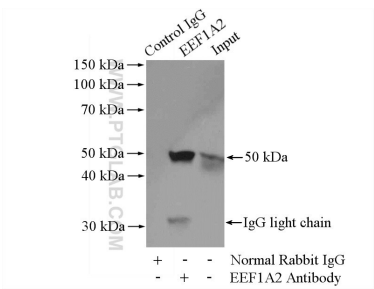
E: proteintech@ptglab.com
W: ptglab.com

This product is exclusively available under Proteintech Group brand and is not available to purchase from any other manufacturer.

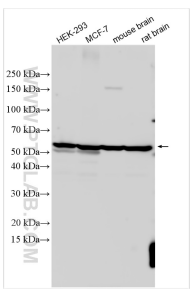
Selected Validation Data



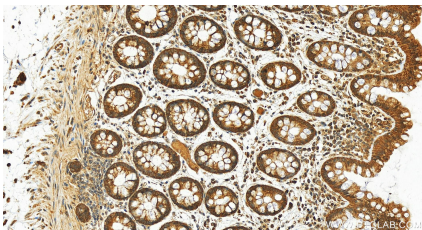
Various lysates were subjected to SDS PAGE followed by western blot with 16091-1-AP (EEF1A2 antibody) at dilution of 1:5000 incubated at room temperature for 1.5 hours.



IP result of anti-EEF1A2 (IP:16091-1-AP, 4ug; Detection:16091-1-AP 1:1000) with mouse brain tissue lysate 4000ug.



Various lysates were subjected to SDS PAGE followed by western blot with 16091-1-AP (EEF1A2 antibody) at dilution of 1:20000 incubated at room temperature for 1.5 hours.



Immunohistochemical analysis of paraffin-embedded human colon slide using 16091-1-AP (EEF1A2 antibody) at dilution of 1:1000 (under 20x lens). Heat mediated antigen retrieval with Tris-EDTA buffer (pH 9.0).