

For Research Use Only

RNASEH2A Polyclonal antibody

Catalog Number: 16132-1-AP

Featured Product

8 Publications



Basic Information

Catalog Number:

16132-1-AP

Size:

150ul, Concentration: 500 ug/ml by Nanodrop;

Source:

Rabbit

Isotype:

IgG

Immunogen Catalog Number:

AG9118

GenBank Accession Number:

BC011748

GeneID (NCBI):

10535

UNIPROT ID:

O75792

Full Name:

ribonuclease H2, subunit A

Calculated MW:

299 aa, 33 kDa

Observed MW:

33 kDa

Purification Method:

Antigen affinity purification

Recommended Dilutions:

WB 1:2000-1:10000

Applications

Tested Applications:

WB, ELISA

Cited Applications:

WB, IHC

Species Specificity:

human

Cited Species:

human, mouse

Positive Controls:

WB : HeLa cells, human liver tissue, MCF-7 cells

Background Information

RNASEH2A(Ribonuclease H2 subunit A) is also named as RNASEH1, RNH1A and belongs to the RNase HII family and Eukaryotic subfamily. It is involved in the removal of the initiator RNA primers of Okazaki fragments, an essential step during chromosomal DNA replication of the lagging strand(PMID:9482870). It is an endonuclease that specifically degrades the RNA of RNA:DNA hybrids. Defects in RNASEH2A are the cause of Aicardi-Goutieres syndrome type 4 (AGS4).

Notable Publications

Author	Pubmed ID	Journal	Application
Sarah K Deasy	31125342	PLoS Genet	WB
Bin Dai	27176716	Oncol Rep	
Fengbo Zhao	34165025	Tumori	IHC

Storage

Storage:

Store at -20°C. Stable for one year after shipment.

Storage Buffer:

PBS with 0.02% sodium azide and 50% glycerol pH 7.3.

Aliquoting is unnecessary for -20°C storage

*** 20ul sizes contain 0.1% BSA

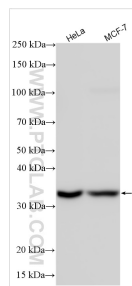
For technical support and original validation data for this product please contact:

T: 1 (888) 4PTGLAB (1-888-478-4522) (toll free in USA), or 1(312) 455-8498 (outside USA)

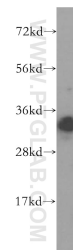
E: proteintech@ptglab.com
W: ptglab.com

This product is exclusively available under Proteintech Group brand and is not available to purchase from any other manufacturer.

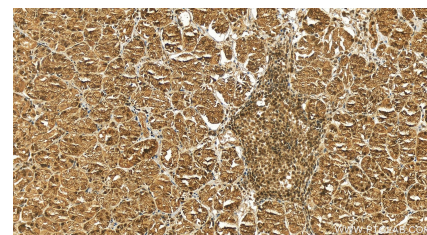
Selected Validation Data



Various lysates were subjected to SDS PAGE followed by western blot with 16132-1-AP (RNASEH2A antibody) at dilution of 1:5000 incubated at room temperature for 1.5 hours.



human liver tissue were subjected to SDS PAGE followed by western blot with 16132-1-AP (RNASEH2A antibody) at dilution of 1:500 incubated at room temperature for 1.5 hours.



Immunohistochemical analysis of paraffin-embedded human stomach tissue slide using 16132-1-AP (RNASEH2A antibody) at dilution of 1:200 (under 20x lens). Heat mediated antigen retrieval with Tris-EDTA buffer (pH 9.0).