

For Research Use Only

ATP6V1G1 Polyclonal antibody

Catalog Number: 16143-1-AP

Featured Product

11 Publications



Basic Information

Catalog Number:

16143-1-AP

Size:

150ul, Concentration: 750 ug/ml by Nanodrop and 260 ug/ml by Bradford method using BSA as the standard;

Source:

Rabbit

Isotype:

IgG

Immunogen Catalog Number:

AG9217

GenBank Accession Number:

BC008452

GeneID (NCBI):

9550

UNIPROT ID:

O75348

Full Name:

ATPase, H⁺ transporting, lysosomal 13kDa, V1 subunit G1

Calculated MW:

118 aa, 14 kDa

Observed MW:

14 kDa

Purification Method:

Antigen affinity purification

Recommended Dilutions:

WB 1:500-1:3000

IP 0.5-4.0 ug for 1.0-3.0 mg of total protein lysate

IHC 1:20-1:200

IF/ICC 1:20-1:200

Applications

Tested Applications:

WB, IHC, IF/ICC, IP, ELISA

Cited Applications:

WB, IHC, IF

Species Specificity:

human, mouse, rat

Cited Species:

human, mouse, rat

Note-IHC: suggested antigen retrieval with TE buffer pH 9.0; (*) Alternatively, antigen retrieval may be performed with citrate buffer pH 6.0

Positive Controls:

WB: Jurkat cells, human kidney tissue

IP: Jurkat cells,

IHC: human kidney tissue, human brain tissue, human heart tissue, human liver tissue, human ovary tissue, human placenta tissue, human skin tissue, human spleen tissue, human testis tissue

IF/ICC: HEK-293 cells,

Notable Publications

| Author | Pubmed ID | Journal | Application |
|-------------------|-----------|----------------|-------------|
| Paul T Manna | 31503392 | Traffic | WB |
| Vishwanatha K Rao | 30317586 | J Cell Physiol | WB |
| Irene Bertolini | 30737083 | EBioMedicine | WB,IHC |

Storage

Storage:

Store at -20°C. Stable for one year after shipment.

Storage Buffer:

PBS with 0.02% sodium azide and 50% glycerol pH 7.3.

Aliquoting is unnecessary for -20°C storage

*** 20ul sizes contain 0.1% BSA

For technical support and original validation data for this product please contact:

T: 1 (888) 4PTGLAB (1-888-478-4522) (toll free in USA), or 1(312) 455-8498 (outside USA)

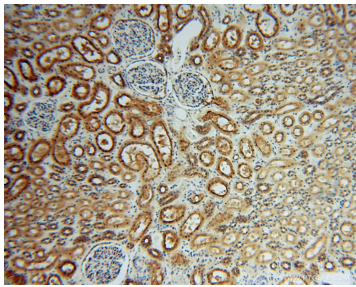
E: proteintech@ptglab.com
W: ptglab.com

This product is exclusively available under Proteintech Group brand and is not available to purchase from any other manufacturer.

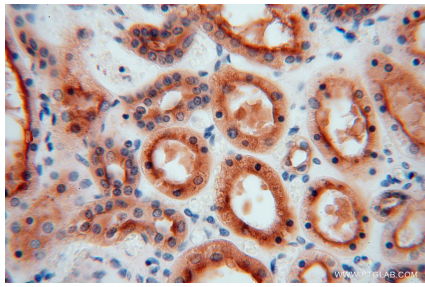
Selected Validation Data



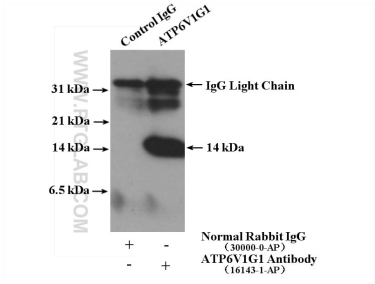
Jurkat cells were subjected to SDS PAGE followed by western blot with 16143-1-AP (ATP6V1G1 antibody) at dilution of 1:500 incubated at room temperature for 1.5 hours.



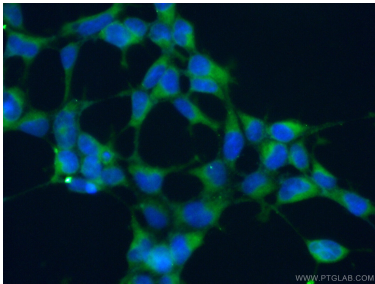
Immunohistochemical analysis of paraffin-embedded human kidney using 16143-1-AP (ATP6V1G1 antibody) at dilution of 1:100 (under 10x lens).



Immunohistochemical analysis of paraffin-embedded human kidney using 16143-1-AP (ATP6V1G1 antibody) at dilution of 1:100 (under 40x lens).



IP result of anti-ATP6V1G1 (IP:16143-1-AP, 4ug; Detection:16143-1-AP 1:500) with Jurkat cells lysate 3440 ug.



Immunofluorescent analysis of (-20°C Ethanol) fixed HEK-293 cells using 16143-1-AP (ATP6V1G1 antibody) at dilution of 1:50 and Alexa Fluor 488-conjugated Goat Anti-Rabbit IgG(H+L).