

For Research Use Only

POLR1E Polyclonal antibody

Catalog Number: 16145-1-AP

Featured Product

7 Publications



Basic Information

Catalog Number:

16145-1-AP

Size:

150ul, Concentration: 600 ug/ml by Nanodrop and 333 ug/ml by Bradford method using BSA as the standard;

Source:

Rabbit

Isotype:

IgG

Immunogen Catalog Number:

AG9269

GenBank Accession Number:

BC014331

GeneID (NCBI):

64425

UNIPROT ID:

Q9GZS1

Full Name:

polymerase (RNA) I polypeptide E, 53kDa

Calculated MW:

481aa, 54 kDa; 419aa, 47 kDa

Observed MW:

47-53 kDa

Purification Method:

Antigen affinity purification

Recommended Dilutions:

WB 1:2000-1:12000

IP 0.5-4.0 ug for 1.0-3.0 mg of total protein lysate

IHC 1:20-1:200

Applications

Tested Applications:

WB, IP, IHC, ELISA

Cited Applications:

WB, IF, ChIP

Species Specificity:

human, mouse, rat

Cited Species:

human

Note-IHC: suggested antigen retrieval with TE buffer pH 9.0; (*) Alternatively, antigen retrieval may be performed with citrate buffer pH 6.0

Positive Controls:

WB : HeLa cells, human brain tissue, Jurkat cells, MCF-7 cells

IP : Jurkat cells,

IHC : human liver cancer tissue,

Notable Publications

Author	Pubmed ID	Journal	Application
Rachel McNamar	31727736	J Biol Chem	WB
Stephanie Pitts	36372232	J Biol Chem	WB
Man Wu	34326237	Science	ChIP

Storage

Storage:

Store at -20°C. Stable for one year after shipment.

Storage Buffer:

PBS with 0.02% sodium azide and 50% glycerol pH 7.3.

Aliquoting is unnecessary for -20°C storage

*** 20ul sizes contain 0.1% BSA

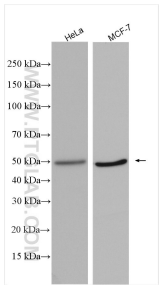
For technical support and original validation data for this product please contact:

T: 1 (888) 4PTGLAB (1-888-478-4522) (toll free in USA), or 1(312) 455-8498 (outside USA)

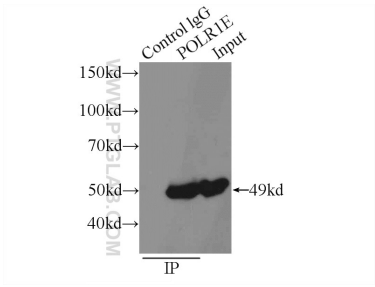
E: proteintech@ptglab.com
W: ptglab.com

This product is exclusively available under Proteintech Group brand and is not available to purchase from any other manufacturer.

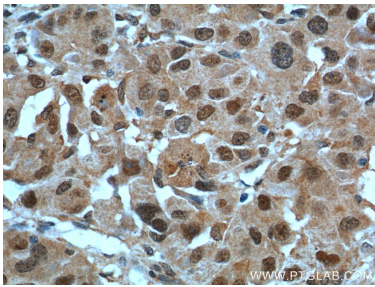
Selected Validation Data



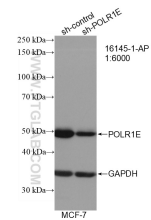
Various lysates were subjected to SDS PAGE followed by western blot with 16145-1-AP (POLR1E antibody) at dilution of 1:6000 incubated at room temperature for 1.5 hours.



IP result of anti-POLR1E (IP:16145-1-AP, 3ug; Detection:16145-1-AP 1:500) with Jurkat cells lysate 1000ug.



Immunohistochemical analysis of paraffin-embedded human liver cancer tissue slide using 16145-1-AP (POLR1E Antibody) at dilution of 1:200 (under 40x lens). Heat mediated antigen retrieval with Tris-EDTA buffer (pH 9.0).



WB result of POLR1E antibody (16145-1-AP; 1:6000; incubated at room temperature for 1.5 hours) with sh-Control and sh-POLR1E transfected MCF-7 cells.