

For Research Use Only

# SMYD1-Specific Polyclonal antibody

Catalog Number: 16151-1-AP

Featured Product

1 Publications



## Basic Information

### Catalog Number:

16151-1-AP

### Size:

150ul, Concentration: 450 ug/ml by Nanodrop and 360 ug/ml by Bradford method using BSA as the standard;

### Source:

Rabbit

### Isotype:

IgG

### GenBank Accession Number:

NM\_198274

### GeneID (NCBI):

150572

### UNIPROT ID:

Q8NB12

### Full Name:

SET and MYND domain containing 1

### Calculated MW:

57 kDa

### Observed MW:

57 kDa

### Purification Method:

Antigen affinity purification

### Recommended Dilutions:

WB 1:500-1:1000

IP 0.5-4.0 ug for 1.0-3.0 mg of total protein lysate

IHC 1:20-1:200

## Applications

### Tested Applications:

WB, IP, IHC, ELISA

### Cited Applications:

WB, IF

### Species Specificity:

human, mouse

### Cited Species:

mouse

**Note-IHC: suggested antigen retrieval with TE buffer pH 9.0; (\*) Alternatively, antigen retrieval may be performed with citrate buffer pH 6.0**

### Positive Controls:

WB : mouse heart tissue, mouse skeletal muscle tissue

IP : mouse heart tissue,

IHC : human testis tissue, human heart tissue, human kidney tissue, human placenta tissue, human skin tissue, human liver tissue, human spleen tissue, human lung tissue, human ovary tissue, mouse heart tissue

## Notable Publications

Author	Pubmed ID	Journal	Application
Fang Li	37385529	Toxicol Lett	WB,IF

## Storage

### Storage:

Store at -20°C. Stable for one year after shipment.

### Storage Buffer:

PBS with 0.02% sodium azide and 50% glycerol pH 7.3.

Aliquoting is unnecessary for -20°C storage

\*\*\* 20ul sizes contain 0.1% BSA

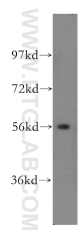
For technical support and original validation data for this product please contact:

T: 1 (888) 4PTGLAB (1-888-478-4522) (toll free in USA), or 1(312) 455-8498 (outside USA)

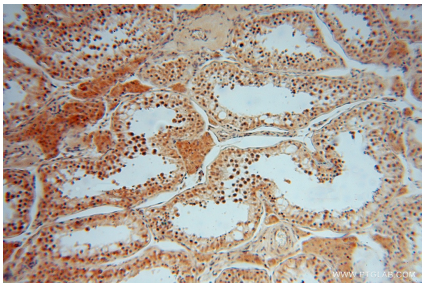
E: [proteintech@ptglab.com](mailto:proteintech@ptglab.com)  
W: [ptglab.com](http://ptglab.com)

This product is exclusively available under Proteintech Group brand and is not available to purchase from any other manufacturer.

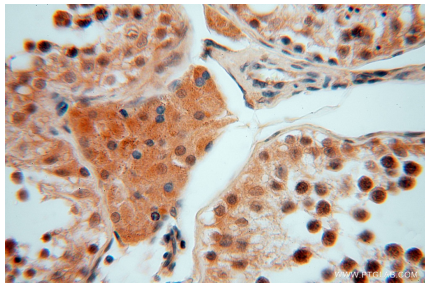
Selected Validation Data



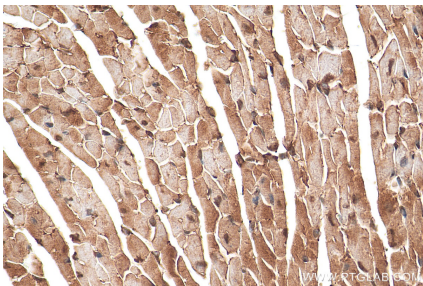
mouse heart tissue were subjected to SDS PAGE followed by western blot with 16151-1-AP (SMYD1-Specific antibody) at dilution of 1:500 incubated at room temperature for 1.5 hours.



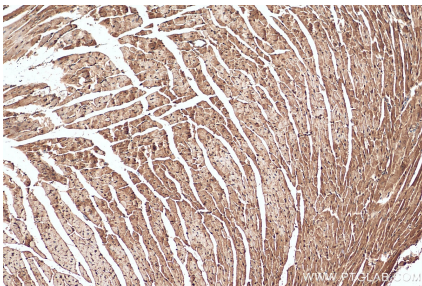
Immunohistochemical analysis of paraffin-embedded human testis using 16151-1-AP (SMYD1-Specific antibody) at dilution of 1:50 (under 10x lens).



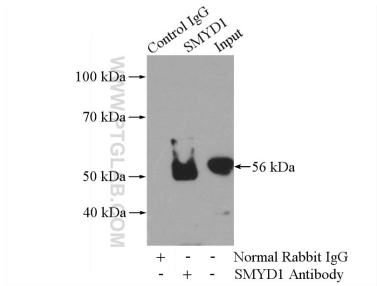
Immunohistochemical analysis of paraffin-embedded human testis using 16151-1-AP (SMYD1-Specific antibody) at dilution of 1:50 (under 40x lens).



Immunohistochemical analysis of paraffin-embedded mouse heart tissue slide using 16151-1-AP (SMYD1-Specific antibody) at dilution of 1:200 (under 10x lens). Heat mediated antigen retrieval with Tris-EDTA buffer (pH 9.0).



Immunohistochemical analysis of paraffin-embedded mouse heart tissue slide using 16151-1-AP (SMYD1-Specific antibody) at dilution of 1:200 (under 40x lens). Heat mediated antigen retrieval with Tris-EDTA buffer (pH 9.0).



IP result of anti-SMYD1-Specific (IP:16151-1-AP, 4ug; Detection:16151-1-AP 1:500) with mouse heart tissue lysate 4000ug.