

For Research Use Only

# CCR2a-specific Polyclonal antibody

Catalog Number: 16153-1-AP

Featured Product

26 Publications



## Basic Information

### Catalog Number:

16153-1-AP

### Size:

150ul, Concentration: 600 ug/ml by Nanodrop;

### Source:

Rabbit

### Isotype:

IgG

### GenBank Accession Number:

NM\_000647

### GeneID (NCBI):

729230

### UNIPROT ID:

P41597

### Full Name:

chemokine (C-C motif) receptor 2

### Calculated MW:

42 kDa

### Observed MW:

35 kDa

### Purification Method:

Antigen affinity purification

### Recommended Dilutions:

WB 1:1000-1:4000

IHC 1:50-1:500

IF/ICC 1:200-1:800

## Applications

### Tested Applications:

WB, IHC, IF/ICC, ELISA

### Cited Applications:

WB, IHC, IF

### Species Specificity:

human, mouse, rat

### Cited Species:

human, mouse, rat

### Positive Controls:

**WB** : Jurkat cells, mouse skeletal muscle tissue, rat skeletal muscle tissue

**IHC** : mouse kidney tissue, human kidney tissue, human ovary tumor tissue

**IF/ICC** : Jurkat cells,

**Note-IHC: suggested antigen retrieval with TE buffer pH 9.0; (\*) Alternatively, antigen retrieval may be performed with citrate buffer pH 6.0**

## Background Information

CCR2 encodes a receptor for MCP1, functioning in inflammatory processes, tumor infiltration, and monocyte invasion of artery walls in atherosclerosis. There are two isoforms of CCR2, CCR2A and CCR2B. CCR2 isoforms were expressed by different cell subsets in both normal and IIM muscle. CCR2A was expressed in vessel walls and by some mononuclear cells, especially in cells involved in partial invasion in PM and IBM. CCR2B expression was observed in all satellite cells, in the muscular domain of neuromuscular junctions, and in some regenerative fibers of IIM, but not in inflammatory exudates. The sequences of the two isoforms are different from 314-374 aa. This antibody 16153-1-AP is raised against the peptide of 344-358 amino acids of CCR2a. It is specific to CCR2a.

## Notable Publications

Author	Pubmed ID	Journal	Application
Hiroaki Yasui	31541326	Clin Exp Metastasis	IHC
Tian Xu	34699947	J Ethnopharmacol	WB
Shin Ung Kang	34775491	Lab Invest	WB

## Storage

### Storage:

Store at -20°C. Stable for one year after shipment.

### Storage Buffer:

PBS with 0.02% sodium azide and 50% glycerol

Aliquoting is unnecessary for -20°C storage

\*\*\* 20ul sizes contain 0.1% BSA

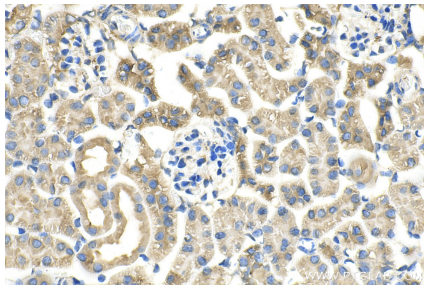
For technical support and original validation data for this product please contact:

T: 1 (888) 4PTGLAB (1-888-478-4522) (toll free in USA), or 1(312) 455-8498 (outside USA)

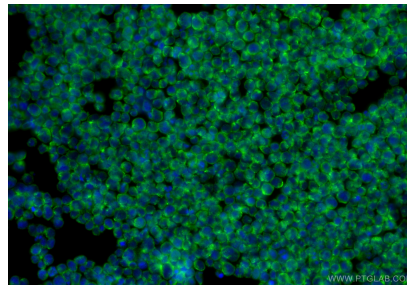
E: [proteintech@ptglab.com](mailto:proteintech@ptglab.com)  
W: [ptglab.com](http://ptglab.com)

This product is exclusively available under Proteintech Group brand and is not available to purchase from any other manufacturer.

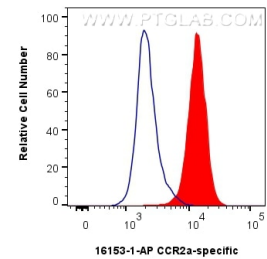
## Selected Validation Data



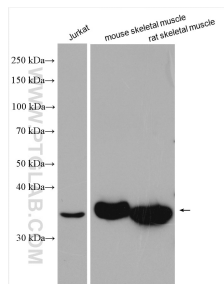
Immunohistochemical analysis of paraffin-embedded mouse kidney tissue slide using 16153-1-AP (CCR2a-specific antibody) at dilution of 1:200 (under 40x lens). Heat mediated antigen retrieval with Tris-EDTA buffer (pH 9.0).



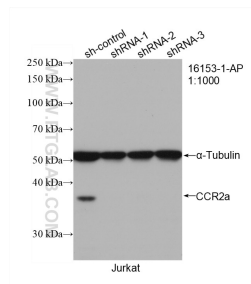
Immunofluorescent analysis of (4% PFA) fixed Jurkat cells using CCR2a-specific antibody (16153-1-AP) at dilution of 1:400 and CoraLite® 488-Conjugated Goat Anti-Rabbit IgG(H+L) (SA00013-2).



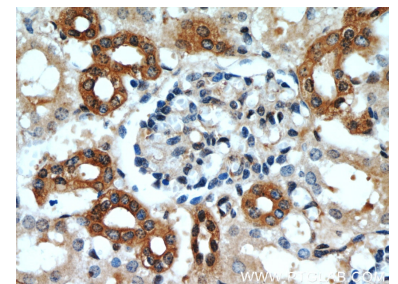
1x10<sup>6</sup> Jurkat cells were intracellularly stained with 0.25 ug CCR2a-specific Polyclonal antibody (16153-1-AP) and CoraLite® 488-Conjugated Goat Anti-Rabbit IgG(H+L) (SA00013-2)(red), or 0.25 ug Rabbit IgG control Rabbit PolyAb (30000-0-AP) (blue). Cells were fixed with 4% PFA and permeabilized with Flow Cytometry Perm Buffer (PF00011-C).



Various lysates were subjected to SDS PAGE followed by western blot with 16153-1-AP (CCR2a-specific antibody) at dilution of 1:2000 incubated at room temperature for 1.5 hours.



WB result of CCR2a-specific antibody (16153-1-AP; 1:1000; incubated at room temperature for 1.5 hours) with sh-Control and sh-CCR2a-specific transfected Jurkat cells.



Immunohistochemical analysis of paraffin-embedded human kidney slide using 16153-1-AP (CCR2a-specific antibody) at dilution of 1:50.