

For Research Use Only

SLC30A8/ZNT8-Specific Polyclonal antibody

Catalog Number: 16169-1-AP

Featured Product

9 Publications



Basic Information

Catalog Number:

16169-1-AP

Size:

150ul, Concentration: 350 ug/ml by Nanodrop;

Source:

Rabbit

Isotype:

IgG

GenBank Accession Number:

NM_173851

GeneID (NCBI):

169026

UNIPROT ID:

Q8IWU4

Full Name:

solute carrier family 30 (zinc transporter), member 8

Calculated MW:

41 kDa

Observed MW:

45-50 kDa

Purification Method:

Antigen affinity purification

Recommended Dilutions:

WB 1:500-1:1000

IHC 1:250-1:1000

IF-P 1:50-1:500

Applications

Tested Applications:

WB, IHC, IF-P, ELISA

Cited Applications:

WB, IF, IHC

Species Specificity:

human, mouse

Cited Species:

human, rat, Yellow catfish, mouse

Note-IHC: suggested antigen retrieval with TE buffer pH 9.0; (*) Alternatively, antigen retrieval may be performed with citrate buffer pH 6.0

Positive Controls:

WB : mouse pancreas tissue,

IHC : human pancreas tissue, human pancreas cancer tissue, human liver cancer tissue

IF-P : human pancreas tissue,

Background Information

SLC30A8 (also named as ZNT8) encodes the secretory granule zinc transporter, permitting cellular efflux of zinc. SLC30A8 was recently defined as a autoantigen candidates of type 2 diabetes, although the molecular mechanism through which this phenotype is manifest is incompletely understood.

Notable Publications

Author	Pubmed ID	Journal	Application
Chengfeng Merriman	30181214	J Biol Chem	
Chengfeng Merriman	29184000	J Biol Chem	WB
Chengfeng Merriman	27875315	J Biol Chem	WB

Storage

Storage:

Store at -20°C. Stable for one year after shipment.

Storage Buffer:

PBS with 0.02% sodium azide and 50% glycerol pH 7.3.

Aliquoting is unnecessary for -20°C storage

*** 20ul sizes contain 0.1% BSA

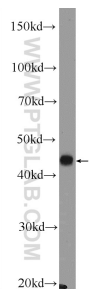
For technical support and original validation data for this product please contact:

T: 1 (888) 4PTGLAB (1-888-478-4522) (toll free in USA), or 1(312) 455-8498 (outside USA)

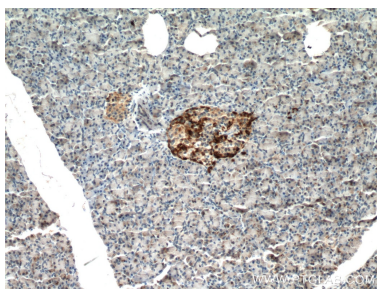
E: proteintech@ptglab.com
W: ptglab.com

This product is exclusively available under Proteintech Group brand and is not available to purchase from any other manufacturer.

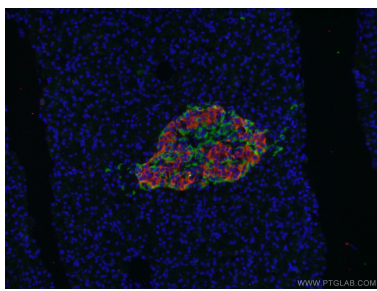
Selected Validation Data



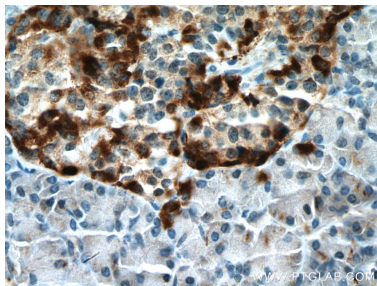
mouse pancreas tissue were subjected to SDS PAGE followed by western blot with 16169-1-AP (SLC30A8/ZNT8-Specific antibody at dilution of 1:600 incubated at room temperature for 1.5 hours.



Immunohistochemical analysis of paraffin-embedded human pancreas tissue slide using 16169-1-AP (SLC30A8/ZNT8-Specific antibody) at dilution of 1:500 (under 10x lens. Heat mediated antigen retrieval with Tris-EDTA buffer (pH 9.0).



Immunofluorescent analysis of (4% PFA) fixed human pancreas tissue using 16169-1-AP (SLC30A8/ZNT8-Specific antibody) at dilution of 1:50 and CoraLite488-Conjugated AffiniPure Goat Anti-Rabbit IgG(H+L). Red: 66198-1-Ig (Insulin antibody).



Immunohistochemical analysis of paraffin-embedded human pancreas tissue slide using 16169-1-AP (SLC30A8/ZNT8-Specific antibody) at dilution of 1:500 (under 40x lens. Heat mediated antigen retrieval with Tris-EDTA buffer (pH 9.0).