

For Research Use Only

# RAB22A-specific Polyclonal antibody

Catalog Number: 16181-1-AP

1 Publications



## Basic Information

### Catalog Number:

16181-1-AP

### Size:

150ul , Concentration: 133 ug/ml by Bradford method using BSA as the standard;

### Source:

Rabbit

### Isotype:

IgG

### GenBank Accession Number:

NM\_020673

### GeneID (NCBI):

57403

### UNIPROT ID:

Q9UL26

### Full Name:

RAB22A, member RAS oncogene family

### Calculated MW:

22 kDa

### Observed MW:

22 kDa

### Purification Method:

Antigen affinity purification

### Recommended Dilutions:

WB 1:500-1:1000

## Applications

### Tested Applications:

WB, ELISA

### Species Specificity:

human, mouse

### Positive Controls:

WB : human kidney tissue, HEK-293 cells

## Background Information

The protein is a member of the RAB family of small GTPases. It localizes in the MHCI-containing recycling endosomal tubules and function in endocytic pathway. It shares 81% identity with RAB31. This antibody can specifically bind RAB22a.

## Notable Publications

Author	Pubmed ID	Journal	Application
Liang Sun	30272274	Int J Oncol	

## Storage

### Storage:

Store at -20°C. Stable for one year after shipment.

### Storage Buffer:

PBS with 0.02% sodium azide and 50% glycerol pH 7.3.

Aliquoting is unnecessary for -20°C storage

\*\*\* 20ul sizes contain 0.1% BSA

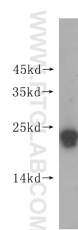
For technical support and original validation data for this product please contact:

T: 1 (888) 4PTGLAB (1-888-478-4522) (toll free in USA), or 1(312) 455-8498 (outside USA)

E: [proteintech@ptglab.com](mailto:proteintech@ptglab.com)  
W: [ptglab.com](http://ptglab.com)

This product is exclusively available under Proteintech Group brand and is not available to purchase from any other manufacturer.

## Selected Validation Data



human kidney tissue were subjected to SDS PAGE followed by western blot with 16181-1-AP (RAB22A-specific antibody) at dilution of 1:300 incubated at room temperature for 1.5 hours.