

For Research Use Only

Claudin 9-specific Polyclonal antibody



Catalog Number: 16196-1-AP

2 Publications

Basic Information

Catalog Number:

16196-1-AP

Size:

150ul , Concentration: 153 µg/ml by Bradford method using BSA as the standard;

Source:

Rabbit

Isotype:

IgG

GenBank Accession Number:

NM_020982

GeneID (NCBI):

9080

UNIPROT ID:

O95484

Full Name:

claudin 9

Calculated MW:

23 kDa

Observed MW:

25-29 kDa

Purification Method:

Antigen affinity purification

Recommended Dilutions:

WB 1:200-1:1000

IP 0.5-4.0 ug for 1.0-3.0 mg of total protein lysate

Applications

Tested Applications:

WB, IP, ELISA

Cited Applications:

WB, IHC

Species Specificity:

human, mouse, rat

Cited Species:

human, rat

Positive Controls:

WB : HeLa cells,

IP : HeLa cells,

Background Information

Claudins are a family of proteins that are the most important components of the tight junctions, where they establish the paracellular barrier that controls the flow of molecules in the intercellular space between the cells of an epithelium. 23 claudins have been identified. They are small (20-27 kilodalton (kDa)) proteins with very similar structure. They have four transmembrane domains, with the N-terminus and the C-terminus in the cytoplasm. This antibody is specifically against claudin 9.

Notable Publications

Author	Pubmed ID	Journal	Application
Zezhong Mou	33424916	Front Genet	WB
Kratzer Ingrid I	22886143	Histochem Cell Biol	WB, IHC

Storage

Storage:

Store at -20°C. Stable for one year after shipment.

Storage Buffer:

PBS with 0.02% sodium azide and 50% glycerol pH 7.3.

Aliquoting is unnecessary for -20°C storage

*** 20ul sizes contain 0.1% BSA

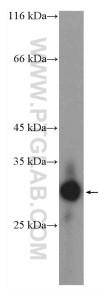
For technical support and original validation data for this product please contact:

T: 1 (888) 4PTGLAB (1-888-478-4522) (toll free in USA), or 1(312) 455-8498 (outside USA)

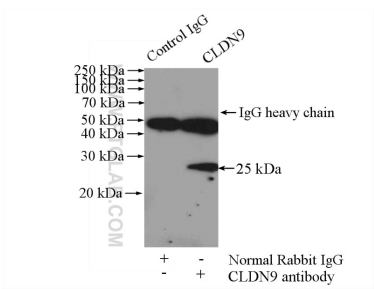
E: proteintech@ptglab.com
W: ptglab.com

This product is exclusively available under Proteintech Group brand and is not available to purchase from any other manufacturer.

Selected Validation Data



HeLa cells were subjected to SDS PAGE followed by western blot with 16196-1-AP (Claudin 9-specific antibody) at dilution of 1:300 incubated at room temperature for 1.5 hours.



IP result of anti-Claudin 9-specific (IP:16196-1-AP, 4ug; Detection:16196-1-AP 1:300) with HeLa cells lysate 880ug.