

For Research Use Only

ASS1 Polyclonal antibody

Catalog Number: 16210-1-AP

Featured Product

35 Publications



Basic Information

Catalog Number:

16210-1-AP

Size:

150ul, Concentration: 600 ug/ml by Nanodrop;

Source:

Rabbit

Isotype:

IgG

Immunogen Catalog Number:

AG9200

GenBank Accession Number:

BC009243

GeneID (NCBI):

445

UNIPROT ID:

P00966

Full Name:

argininosuccinate synthetase 1

Calculated MW:

412 aa, 47 kDa

Observed MW:

45 kDa

Purification Method:

Antigen affinity purification

Recommended Dilutions:

WB 1:5000-1:50000

IP 0.5-4.0 ug for 1.0-3.0 mg of total protein lysate

IHC 1:50-1:500

IF/ICC 1:200-1:800

Applications

Tested Applications:

WB, IHC, IF/ICC, IP, ELISA

Cited Applications:

WB, IHC, IF, CoIP

Species Specificity:

human, mouse, rat

Cited Species:

human, mouse, rat

Positive Controls:

WB : HEK-293 cells, HeLa cells, rat kidney tissue, SMMC-7721 cells, Jurkat cells, mouse kidney tissue

IP : HeLa cells,

IHC : human testis tissue, human liver tissue, human placenta tissue, human liver cancer tissue

IF/ICC : HeLa cells,

Note-IHC: suggested antigen retrieval with TE buffer pH 9.0; (*) Alternatively, antigen retrieval may be performed with citrate buffer pH 6.0

Background Information

ASS1 is a rate-limiting enzyme in the urea cycle. Citrullinemia type I is an autosomal recessive disorder that is caused by a deficiency of the urea cycle enzyme argininosuccinate synthetase (ASS1). Deficiency of ASS1 shows various clinical manifestations encompassing severely affected patients with fatal neonatal hyperammonemia as well as asymptomatic individuals with only a biochemical phenotype(PMID:19006241).

Notable Publications

Author	Pubmed ID	Journal	Application
Xiaorui Yao	29031784	J Ethnopharmacol	WB
Shizhen Qin	27575953	J Proteome Res	WB
Li Zhou	35655758	Front Mol Biosci	WB,IHC

Storage

Storage:

Store at -20°C. Stable for one year after shipment.

Storage Buffer:

PBS with 0.02% sodium azide and 50% glycerol pH 7.3.

Aliquoting is unnecessary for -20°C storage

*** 20ul sizes contain 0.1% BSA

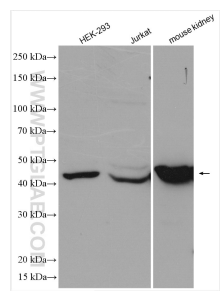
For technical support and original validation data for this product please contact:

T: 1 (888) 4PTGLAB (1-888-478-4522) (toll free in USA), or 1(312) 455-8498 (outside USA)

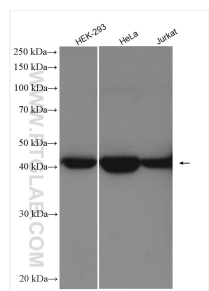
E: proteintech@ptglab.com
W: ptglab.com

This product is exclusively available under Proteintech Group brand and is not available to purchase from any other manufacturer.

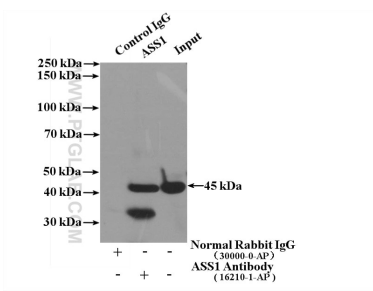
Selected Validation Data



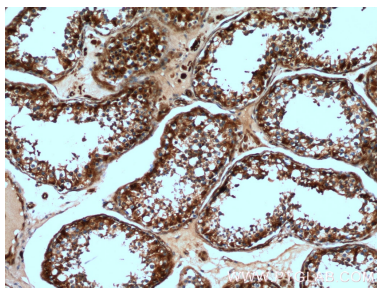
Various lysates were subjected to SDS PAGE followed by western blot with 16210-1-AP (ASS1 antibody) at dilution of 1:8000 incubated at room temperature for 1.5 hours.



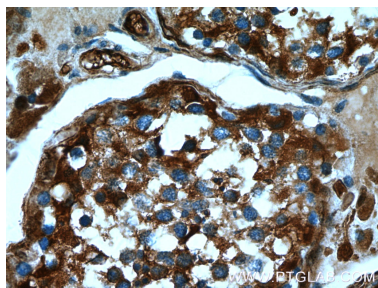
Various lysates were subjected to SDS PAGE followed by western blot with 16210-1-AP (ASS1 antibody) at dilution of 1:20000 incubated at room temperature for 1.5 hours.



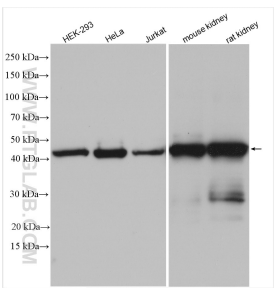
IP result of anti-ASS1 (IP:16210-1-AP, 4ug; Detection:16210-1-AP 1:1500) with HeLa cells lysate 1600ug.



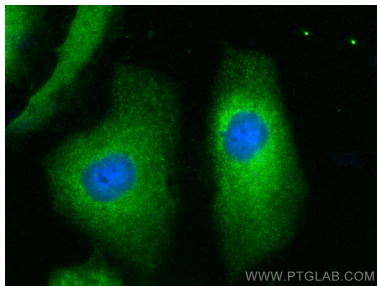
Immunohistochemical analysis of paraffin-embedded human testis tissue slide using 16210-1-AP (ASS1 Antibody) at dilution of 1:200 (under 10x lens).



Immunohistochemical analysis of paraffin-embedded human testis tissue slide using 16210-1-AP (ASS1 Antibody) at dilution of 1:200 (under 40x lens).



Various lysates were subjected to SDS PAGE followed by western blot with 16210-1-AP (ASS1 antibody) at dilution of 1:15000 incubated at room temperature for 1.5 hours.



Immunofluorescent analysis of (-20°C Ethanol) fixed HeLa cells using ASS1 antibody (16210-1-AP) at dilution of 1:400 and CoraLite®488-Conjugated Goat Anti-Rabbit IgG(H+L) (SA00013-2).