

For Research Use Only

KLHL22 Polyclonal antibody

Catalog Number: 16214-1-AP

Featured Product

9 Publications



Basic Information

Catalog Number:
16214-1-AP

Size:
150ul, Concentration: 650 µg/ml by Nanodrop and 353 µg/ml by Bradford method using BSA as the standard;

Source:
Rabbit

Isotype:
IgG

Immunogen Catalog Number:
AG9212

GenBank Accession Number:
BC015923

GeneID (NCBI):
84861

Full Name:
kelch-like 22 (Drosophila)

Calculated MW:
634 aa, 72 kDa

Observed MW:
72 kDa

Purification Method:
Antigen affinity purification

Recommended Dilutions:
WB 1:1000-1:6000
IP 0.5-4.0 ug for IP and 1:500-1:1000 for WB

Applications

Tested Applications:
IP, WB, ELISA

Cited Applications:
IP, WB

Species Specificity:
human, mouse, rat

Cited Species:
human, mouse

Positive Controls:

WB: mouse brain tissue, rat brain tissue

IP: PC-3 cells,

Background Information

Notable Publications

Author	Pubmed ID	Journal	Application
Kohji Kato	33130828	J Hum Genet	WB
Donghua Wen	29166606	Cell Rep	WB
Bao-Qin Liu	36394357	EMBO Rep	WB,IP

Storage

Storage:

Store at -20°C. Stable for one year after shipment.

Storage Buffer:

PBS with 0.02% sodium azide and 50% glycerol pH 7.3.

Aliquoting is unnecessary for -20°C storage

*** 20ul sizes contain 0.1% BSA

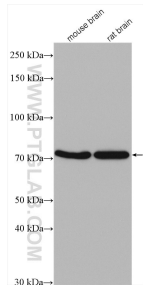
For technical support and original validation data for this product please contact:

T: 1 (888) 4PTGLAB (1-888-478-4522) (toll free in USA), or 1(312) 455-8498 (outside USA)

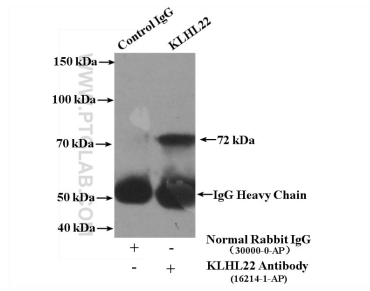
E: proteintech@ptglab.com
W: ptglab.com

This product is exclusively available under Proteintech Group brand and is not available to purchase from any other manufacturer.

Selected Validation Data



Various lysates were subjected to SDS PAGE followed by western blot with 16214-1-AP (KLHL22 antibody) at dilution of 1:3000 incubated at room temperature for 1.5 hours.



IP Result of anti-KLHL22 (IP:16214-1-AP, 4ug; Detection:16214-1-AP 1:500) with PC-3 cells lysate 3200ug.