

For Research Use Only

# MRPL24 Polyclonal antibody

Catalog Number: 16224-1-AP

Featured Product

5 Publications



## Basic Information

### Catalog Number:

16224-1-AP

### Size:

150ul, Concentration: 500 ug/ml by Nanodrop and 180 ug/ml by Bradford method using BSA as the standard;

### Source:

Rabbit

### Isotype:

IgG

### Immunogen Catalog Number:

AG9277

### GenBank Accession Number:

BC016700

### GeneID (NCBI):

79590

### UNIPROT ID:

Q96A35

### Full Name:

mitochondrial ribosomal protein L24

### Calculated MW:

216 aa, 25 kDa

### Observed MW:

25 kDa

### Purification Method:

Antigen affinity purification

### Recommended Dilutions:

WB 1:1000-1:8000

IP 0.5-4.0 ug for 1.0-3.0 mg of total protein lysate

## Applications

### Tested Applications:

WB, IP, ELISA

### Cited Applications:

WB

### Species Specificity:

human, mouse, rat

### Cited Species:

human, mouse

### Positive Controls:

WB : mouse liver tissue, HEK-293 cells

IP : HEK-293 cells,

## Notable Publications

Author	Pubmed ID	Journal	Application
Uwe Richter	26504172	J Cell Biol	WB
Henrick Horita	29786648	Proteomes	WB
Sofia Zaganelli	28082677	J Biol Chem	WB

## Storage

### Storage:

Store at -20°C. Stable for one year after shipment.

### Storage Buffer:

PBS with 0.02% sodium azide and 50% glycerol pH 7.3.

Aliquoting is unnecessary for -20°C storage

\*\*\* 20ul sizes contain 0.1% BSA

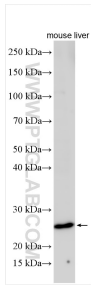
For technical support and original validation data for this product please contact:

T: 1 (888) 4PTGLAB (1-888-478-4522) (toll free in USA), or 1(312) 455-8498 (outside USA)

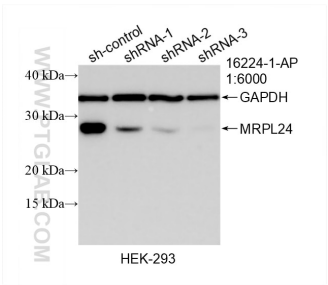
E: [proteintech@ptglab.com](mailto:proteintech@ptglab.com)  
W: [ptglab.com](http://ptglab.com)

This product is exclusively available under Proteintech Group brand and is not available to purchase from any other manufacturer.

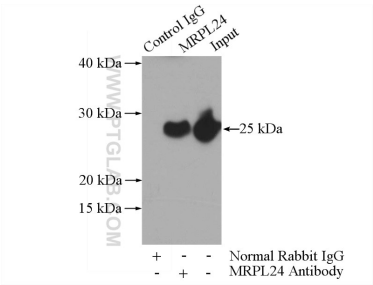
Selected Validation Data



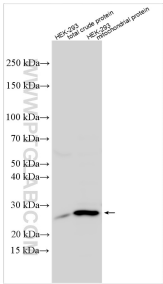
mouse liver tissue were subjected to SDS PAGE followed by western blot with 16224-1-AP (MRPL24 antibody) at dilution of 1:4000 incubated at room temperature for 1.5 hours.



WB result of MRPL24 antibody (16224-1-AP; 1:6000; incubated at room temperature for 1.5 hours) with sh-Control and sh-MRPL24 transfected HEK-293 cells.



IP result of anti-MRPL24 (IP:16224-1-AP, 4ug; Detection:16224-1-AP 1:1000) with HEK-293 cells lysate 1480ug.



Various lysates were subjected to SDS PAGE followed by western blot with 16224-1-AP (MRPL24 antibody) at dilution of 1:8000 incubated at room temperature for 1.5 hours.