

For Research Use Only

# CAP1 Polyclonal antibody

Catalog Number: 16231-1-AP

Featured Product

5 Publications



## Basic Information

### Catalog Number:

16231-1-AP

### Size:

150ul, Concentration: 750 ug/ml by Nanodrop;

### Source:

Rabbit

### Isotype:

IgG

### Immunogen Catalog Number:

AG8876

### GenBank Accession Number:

BC013963

### GeneID (NCBI):

10487

### UNIPROT ID:

Q01518

### Full Name:

CAP, adenylate cyclase-associated protein 1 (yeast)

### Calculated MW:

475 aa, 52 kDa

### Observed MW:

52 kDa

### Purification Method:

Antigen affinity purification

### Recommended Dilutions:

WB 1:1000-1:6000

IP 0.5-4.0 ug for 1.0-3.0 mg of total protein lysate

IHC 1:50-1:500

## Applications

### Tested Applications:

WB, IP, IHC, ELISA

### Cited Applications:

WB, IF

### Species Specificity:

human, mouse, rat

### Cited Species:

human, rat, mouse, pig, bovine

**Note-IHC: suggested antigen retrieval with TE buffer pH 9.0; (\*) Alternatively, antigen retrieval may be performed with citrate buffer pH 6.0**

### Positive Controls:

WB : Caco-2 cells, COLO 320 cells, HepG2 cells

IP : A431 cells,

IHC : human pancreas cancer tissue,

## Background Information

CAP1, also known as CAP, CAP1-PEN, belongs to the CAP family and contains 1 C-CAP/cofactor C-like domain. CAP1 binds to monomeric actin and regulates the actin cytoskeleton to control cell size, adhesion, and migration (PMID: 23737525). CAP1 also functions as a receptor for inflammatory cytokine resistin (PMID: 24606903). CAP1 is an abundant and ubiquitously expressed protein. Western blot analysis detected CAP1 at an apparent molecular mass of 52 kDa.

## Notable Publications

Author	Pubmed ID	Journal	Application
Anika Heinze	36264429	Cell Mol Life Sci	WB
Shunli Yang	31684202	Viruses	WB
Xiaohan Yuan	30847953	Cell Biochem Funct	WB

## Storage

### Storage:

Store at -20°C. Stable for one year after shipment.

### Storage Buffer:

PBS with 0.02% sodium azide and 50% glycerol pH 7.3.

Aliquoting is unnecessary for -20°C storage

\*\*\* 20ul sizes contain 0.1% BSA

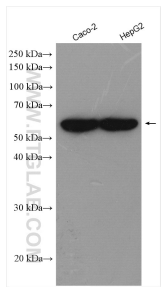
For technical support and original validation data for this product please contact:

T: 1 (888) 4PTGLAB (1-888-478-4522) (toll free in USA), or 1(312) 455-8498 (outside USA)

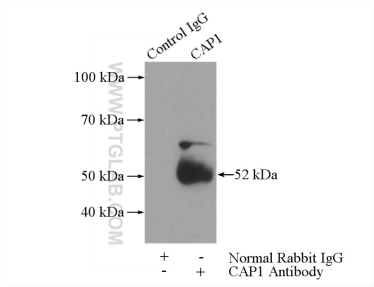
E: proteintech@ptglab.com  
W: ptglab.com

This product is exclusively available under Proteintech Group brand and is not available to purchase from any other manufacturer.

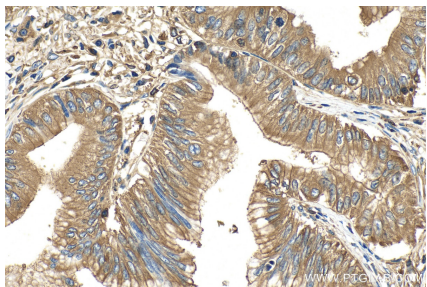
Selected Validation Data



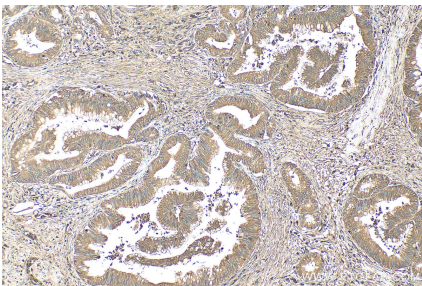
Caco-2 cells were subjected to SDS PAGE followed by western blot with 16231-1-AP (CAP1 antibody) at dilution of 1:3000 incubated at room temperature for 1.5 hours.



IP result of anti-CAP1 (IP:16231-1-AP, 3ug; Detection:16231-1-AP 1:500) with A431 cells lysate 1520ug.



Immunohistochemical analysis of paraffin-embedded human pancreas cancer tissue slide using 16231-1-AP (CAP1 antibody) at dilution of 1:200 (under 40x lens). Heat mediated antigen retrieval with Tris-EDTA buffer (pH 9.0).



Immunohistochemical analysis of paraffin-embedded human pancreas cancer tissue slide using 16231-1-AP (CAP1 antibody) at dilution of 1:200 (under 10x lens). Heat mediated antigen retrieval with Tris-EDTA buffer (pH 9.0).