

For Research Use Only

ATP13A1 Polyclonal antibody

Catalog Number: 16244-1-AP

Featured Product

13 Publications



Basic Information

Catalog Number:

16244-1-AP

Size:

150ul, Concentration: 900 ug/ml by Nanodrop;

Source:

Rabbit

Isotype:

IgG

Immunogen Catalog Number:

AG9174

GenBank Accession Number:

BC009302

GeneID (NCBI):

57130

UNIPROT ID:

Q9HD20

Full Name:

ATPase type 13A1

Calculated MW:

976 aa, 109 kDa

Observed MW:

120-130 kDa

Purification Method:

Antigen affinity purification

Recommended Dilutions:

WB 1:1000-1:8000

IP 0.5-4.0 ug for 1.0-3.0 mg of total protein lysate

IHC 1:50-1:500

IF/ICC 1:20-1:200

Applications

Tested Applications:

WB, IHC, IF/ICC, IP, ELISA

Cited Applications:

WB, ColP

Species Specificity:

human, mouse, rat

Cited Species:

human, mouse

Note-IHC: suggested antigen retrieval with TE buffer pH 9.0; (*) Alternatively, antigen retrieval may be performed with citrate buffer pH 6.0

Positive Controls:

WB : mouse liver tissue, rat liver tissue

IP : HeLa cells,

IHC : mouse liver tissue,

IF/ICC : HepG2 cells,

Notable Publications

Author	Pubmed ID	Journal	Application
Tingting Li	34706230	Cell Rep	WB
Alina Guna	36264797	Science	WB
Michael J McKenna	36283413	Mol Cell	WB

Storage

Storage:

Store at -20°C. Stable for one year after shipment.

Storage Buffer:

PBS with 0.02% sodium azide and 50% glycerol pH 7.3.

Aliquoting is unnecessary for -20°C storage

*** 20ul sizes contain 0.1% BSA

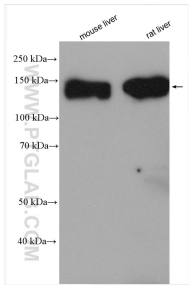
For technical support and original validation data for this product please contact:

T: 1 (888) 4PTGLAB (1-888-478-4522) (toll free in USA), or 1(312) 455-8498 (outside USA)

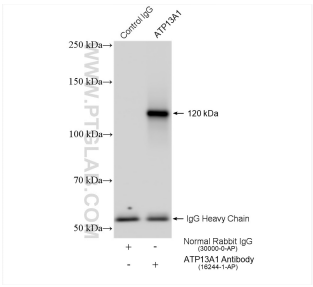
E: proteintech@ptglab.com
W: ptglab.com

This product is exclusively available under Proteintech Group brand and is not available to purchase from any other manufacturer.

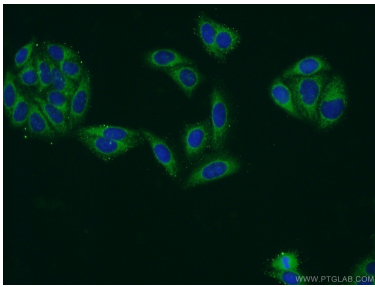
Selected Validation Data



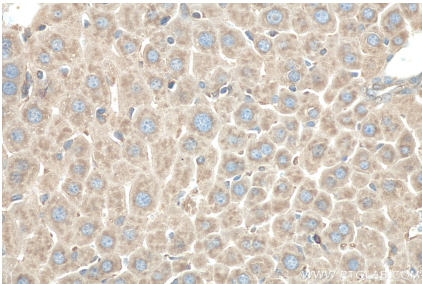
Various lysates were subjected to SDS PAGE followed by western blot with 16244-1-AP (ATP13A1 antibody) at dilution of 1:4000 incubated at room temperature for 1.5 hours.



IP result of anti-ATP13A1 (IP:16244-1-AP, 4ug; Detection:16244-1-AP 1:8000) with HeLa cells lysate 1560 ug.



Immunofluorescent analysis of HepG2 cells using 16244-1-AP (ATP13A1 antibody) at dilution of 1:50 and Alexa Fluor 488-conjugated Goat Anti-Rabbit IgG(H+L).



Immunohistochemical analysis of paraffin-embedded mouse liver tissue slide using 16244-1-AP (ATP13A1 antibody) at dilution of 1:200 (under 40x lens). Heat mediated antigen retrieval with Tris-EDTA buffer (pH 9.0).