

For Research Use Only

RAP2B Polyclonal antibody

Catalog Number: 16266-1-AP

1 Publications



Basic Information

Catalog Number:

16266-1-AP

Size:

150ul, Concentration: 240 ug/ml by Nanodrop and 167 ug/ml by Bradford method using BSA as the standard;

Source:

Rabbit

Isotype:

IgG

Immunogen Catalog Number:

AG9331

GenBank Accession Number:

BC012362

GeneID (NCBI):

5912

UNIPROT ID:

P61225

Full Name:

RAP2B, member of RAS oncogene family

Calculated MW:

183 aa, 21 kDa

Observed MW:

19-22 kDa

Purification Method:

Antigen affinity purification

Recommended Dilutions:

WB 1:1000-1:8000

IHC 1:50-1:500

Applications

Tested Applications:

WB, IHC, ELISA

Cited Applications:

WB

Species Specificity:

human, mouse, rat

Cited Species:

mouse

Note-IHC: suggested antigen retrieval with TE buffer pH 9.0; (*) Alternatively, antigen retrieval may be performed with citrate buffer pH 6.0

Positive Controls:

WB : mouse brain tissue, MCF-7 cells, rat brain tissue, HEK-293 cells

IHC : human stomach tissue,

Background Information

RAP2B belongs to a family of RAS-related genes. It share approximately 50% amino acid identity with the classical RAS proteins and have numerous structural features in common. Rap2B is a platelet protein that is activated by thrombin and involved in platelet activation. RAP2B may be a novel candidate oncogene that plays important roles in carcinogenesis through activation of NF-kappaB pathway.

Notable Publications

Author	Pubmed ID	Journal	Application
Li Yi Y	22081607	J Biol Chem	WB

Storage

Storage:

Store at -20°C. Stable for one year after shipment.

Storage Buffer:

PBS with 0.02% sodium azide and 50% glycerol pH 7.3.

Aliquoting is unnecessary for -20°C storage

*** 20ul sizes contain 0.1% BSA

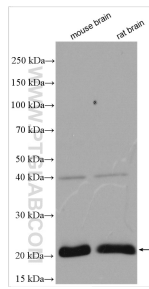
For technical support and original validation data for this product please contact:

T: 1 (888) 4PTGLAB (1-888-478-4522) (toll free in USA), or 1(312) 455-8498 (outside USA)

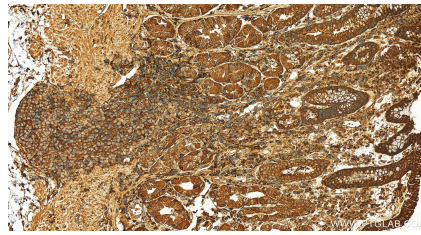
E: proteintech@ptglab.com
W: ptglab.com

This product is exclusively available under Proteintech Group brand and is not available to purchase from any other manufacturer.

Selected Validation Data



Various lysates were subjected to SDS PAGE followed by western blot with 16266-1-AP (RAP2B antibody) at dilution of 1:4000 incubated at room temperature for 1.5 hours.



Immunohistochemical analysis of paraffin-embedded human stomach tissue slide using 16266-1-AP (RAP2B antibody) at dilution of 1:200 (under 20x lens). Heat mediated antigen retrieval with Tris-EDTA buffer (pH 9.0).