

For Research Use Only

GCC1 Polyclonal antibody

Catalog Number: 16271-1-AP

7 Publications



Basic Information

Catalog Number:

16271-1-AP

Size:

150ul, Concentration: 1000 ug/ml by Nanodrop and 333 ug/ml by Bradford method using BSA as the standard;

Source:

Rabbit

Isotype:

IgG

Immunogen Catalog Number:

AG9339

GenBank Accession Number:

BC014100

GeneID (NCBI):

79571

UNIPROT ID:

Q96CN9

Full Name:

GRIP and coiled-coil domain containing 1

Calculated MW:

775 aa, 88 kDa

Observed MW:

105 kDa

Purification Method:

Antigen affinity purification

Recommended Dilutions:

WB 1:2000-1:12000

IHC 1:50-1:500

IF/ICC 1:10-1:100

Applications

Tested Applications:

WB, IHC, IF/ICC, ELISA

Cited Applications:

WB, IF

Species Specificity:

human, mouse

Cited Species:

human

Note-IHC: suggested antigen retrieval with TE buffer pH 9.0; (*) Alternatively, antigen retrieval may be performed with citrate buffer pH 6.0

Positive Controls:

WB: HeLa cells, mouse ovary tissue

IHC: human liver tissue,

IF/ICC: A431 cells,

Background Information

GCC1 (Golgi coiled coil protein 1), also known as GCC1P or GCC88, is a protein probably involved in maintaining Golgi structure. The MW of this protein is 105 kDa, and Catalog#16271-1-AP specially recognises the 105 kDa protein.

Notable Publications

Author	Pubmed ID	Journal	Application
Jianchao Zhang	35291301	bioRxiv	WB
Erpan Ahat	35780830	J Biol Chem	WB
Stephen C Ireland	32583744	Mol Biol Cell	WB

Storage

Storage:

Store at -20°C. Stable for one year after shipment.

Storage Buffer:

PBS with 0.02% sodium azide and 50% glycerol pH 7.3.

Aliquoting is unnecessary for -20°C storage

*** 20ul sizes contain 0.1% BSA

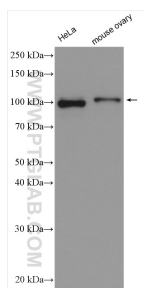
For technical support and original validation data for this product please contact:

T: 1 (888) 4PTGLAB (1-888-478-4522) (toll free in USA), or 1(312) 455-8498 (outside USA)

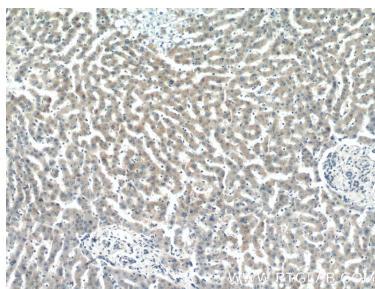
E: proteintech@ptglab.com
W: ptglab.com

This product is exclusively available under Proteintech Group brand and is not available to purchase from any other manufacturer.

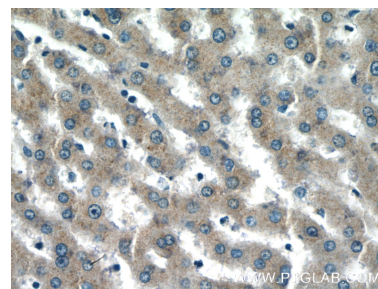
Selected Validation Data



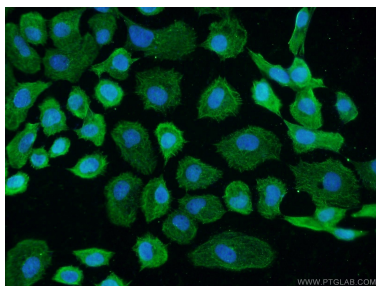
Various lysates were subjected to SDS PAGE followed by western blot with 16271-1-AP (GCC1 antibody) at dilution of 1:6000 incubated at room temperature for 1.5 hours.



Immunohistochemical analysis of paraffin-embedded human liver tissue slide using 16271-1-AP (GCC1 antibody) at dilution of 1:200 (under 10x lens).



Immunohistochemical analysis of paraffin-embedded human liver tissue slide using 16271-1-AP (GCC1 antibody) at dilution of 1:200 (under 40x lens).



Immunofluorescent analysis of A431 cells using 16271-1-AP (GCC1 antibody) at dilution of 1:25 and Alexa Fluor 488-conjugated Goat Anti-Rabbit IgG(H+L).