

For Research Use Only

ATP6V1C2 Polyclonal antibody

Catalog Number: 16274-1-AP

Featured Product

3 Publications



Basic Information

Catalog Number:

16274-1-AP

Size:

150ul, Concentration: 800 ug/ml by Nanodrop and 333 ug/ml by Bradford method using BSA as the standard;

Source:

Rabbit

Isotype:

IgG

Immunogen Catalog Number:

AG9349

GenBank Accession Number:

BC012142

GeneID (NCBI):

245973

UNIPROT ID:

Q8NEY4

Full Name:

ATPase, H⁺ transporting, lysosomal 42kDa, V1 subunit C2

Calculated MW:

381 aa, 44 kDa

Observed MW:

44 kDa

Purification Method:

Antigen affinity purification

Recommended Dilutions:

WB 1:500-1:1000

IHC 1:20-1:200

Applications

Tested Applications:

WB, IHC, ELISA

Cited Applications:

WB, IHC, IF

Species Specificity:

human, mouse

Cited Species:

human

Positive Controls:

WB: mouse kidney tissue, human kidney tissue

IHC: human testis tissue, human heart tissue, human kidney tissue, human liver tissue, human lung tissue, human placenta tissue

Note-IHC: suggested antigen retrieval with TE buffer pH 9.0; (*) Alternatively, antigen retrieval may be performed with citrate buffer pH 6.0

Notable Publications

Author	Pubmed ID	Journal	Application
Guanghua Li	36212133	Front Genet	WB,IHC
Lishi Xie	32525701	Environ Health Perspect	WB,IF
Jun Li	38772116	Pathol Res Pract	WB

Storage

Storage:

Store at -20°C. Stable for one year after shipment.

Storage Buffer:

PBS with 0.02% sodium azide and 50% glycerol pH 7.3.

Aliquoting is unnecessary for -20°C storage

*** 20ul sizes contain 0.1% BSA

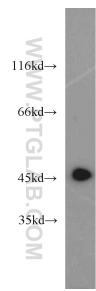
For technical support and original validation data for this product please contact:

T: 1 (888) 4PTGLAB (1-888-478-4522) (toll free in USA), or 1(312) 455-8498 (outside USA)

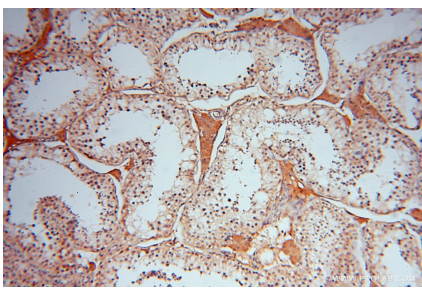
E: proteintech@ptglab.com
W: ptglab.com

This product is exclusively available under Proteintech Group brand and is not available to purchase from any other manufacturer.

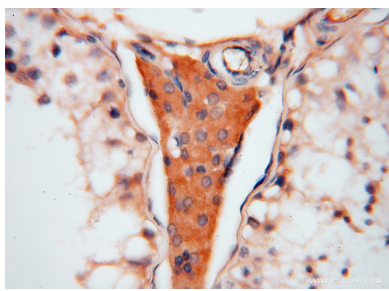
Selected Validation Data



mouse kidney tissue were subjected to SDS PAGE followed by western blot with 16274-1-AP (ATP6V1C2 antibody) at dilution of 1:800 incubated at room temperature for 1.5 hours.



Immunohistochemical analysis of paraffin-embedded human testis using 16274-1-AP (ATP6V1C2 antibody) at dilution of 1:50 (under 10x lens).



Immunohistochemical analysis of paraffin-embedded human testis using 16274-1-AP (ATP6V1C2 antibody) at dilution of 1:50 (under 40x lens).