

For Research Use Only

GCAT Polyclonal antibody

Catalog Number: 16317-1-AP **1 Publications**



Basic Information

Catalog Number: 16317-1-AP	GenBank Accession Number: BC014457	Purification Method: Antigen affinity purification
Size: 150ul , Concentration: 350 µg/ml by Nanodrop and 300 µg/ml by Bradford method using BSA as the standard;	GeneID (NCBI): 23464	Recommended Dilutions: WB 1:1000-1:4000 IHC 1:20-1:200
Source: Rabbit	Full Name: glycine C-acetyltransferase (2-amino-3-ketobutyrate coenzyme A ligase)	
Isotype: IgG	Calculated MW: 419 aa, 45 kDa	
Immunogen Catalog Number: AG9367	Observed MW: 45 kDa	

Applications

Tested Applications: IHC, WB, ELISA	Positive Controls:
Cited Applications: WB	WB : mouse pancreas tissue, rat pancreas tissue
Species Specificity: human, mouse, rat	IHC : human pancreas tissue,
Cited Species: mouse	

Note-IHC: suggested antigen retrieval with TE buffer pH 9.0; (*) Alternatively, antigen retrieval may be performed with citrate buffer pH 6.0

Background Information

Notable Publications

Author	Pubmed ID	Journal	Application
Shengya Tian	31562192	Life Sci Alliance	WB

Storage

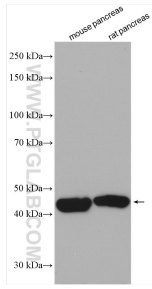
Storage:
Store at -20°C. Stable for one year after shipment.
Storage Buffer:
PBS with 0.02% sodium azide and 50% glycerol pH 7.3.
Aliquoting is unnecessary for -20°C storage

*** 20ul sizes contain 0.1% BSA

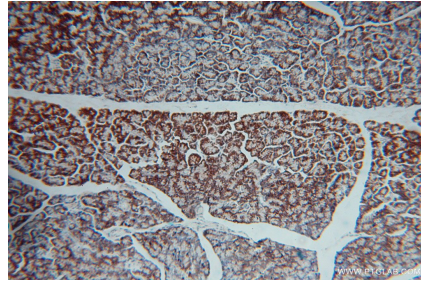
For technical support and original validation data for this product please contact:
T: 1 (888) 4PTGLAB (1-888-478-4522) (toll free in USA), or 1(312) 455-8498 (outside USA) E: proteintech@ptglab.com W: ptglab.com

This product is exclusively available under Proteintech Group brand and is not available to purchase from any other manufacturer.

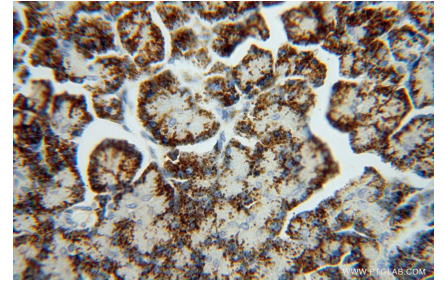
Selected Validation Data



Various lysates were subjected to SDS PAGE followed by western blot with 16317-1-AP (GCAT antibody) at dilution of 1:2000 incubated at room temperature for 1.5 hours.



Immunohistochemical analysis of paraffin-embedded human pancreas using 16317-1-AP (GCAT antibody) at dilution of 1:100 (under 10x lens).



Immunohistochemical analysis of paraffin-embedded human pancreas using 16317-1-AP (GCAT antibody) at dilution of 1:100 (under 40x lens).